

A photograph of two firefighters in full protective gear, including helmets and masks, working at a fire scene. Large flames are visible in the upper left corner. The scene is dimly lit, with light from the fire and the firefighters' equipment illuminating the area. The text 'ADDISON FIRE DEPARTMENT' is overlaid in large, bold, blue letters at the top center.

ADDISON

FIRE DEPARTMENT

*Accountability
Family
Duty*

2024 ANNUAL REPORT

OUR
MISSION STATEMENT

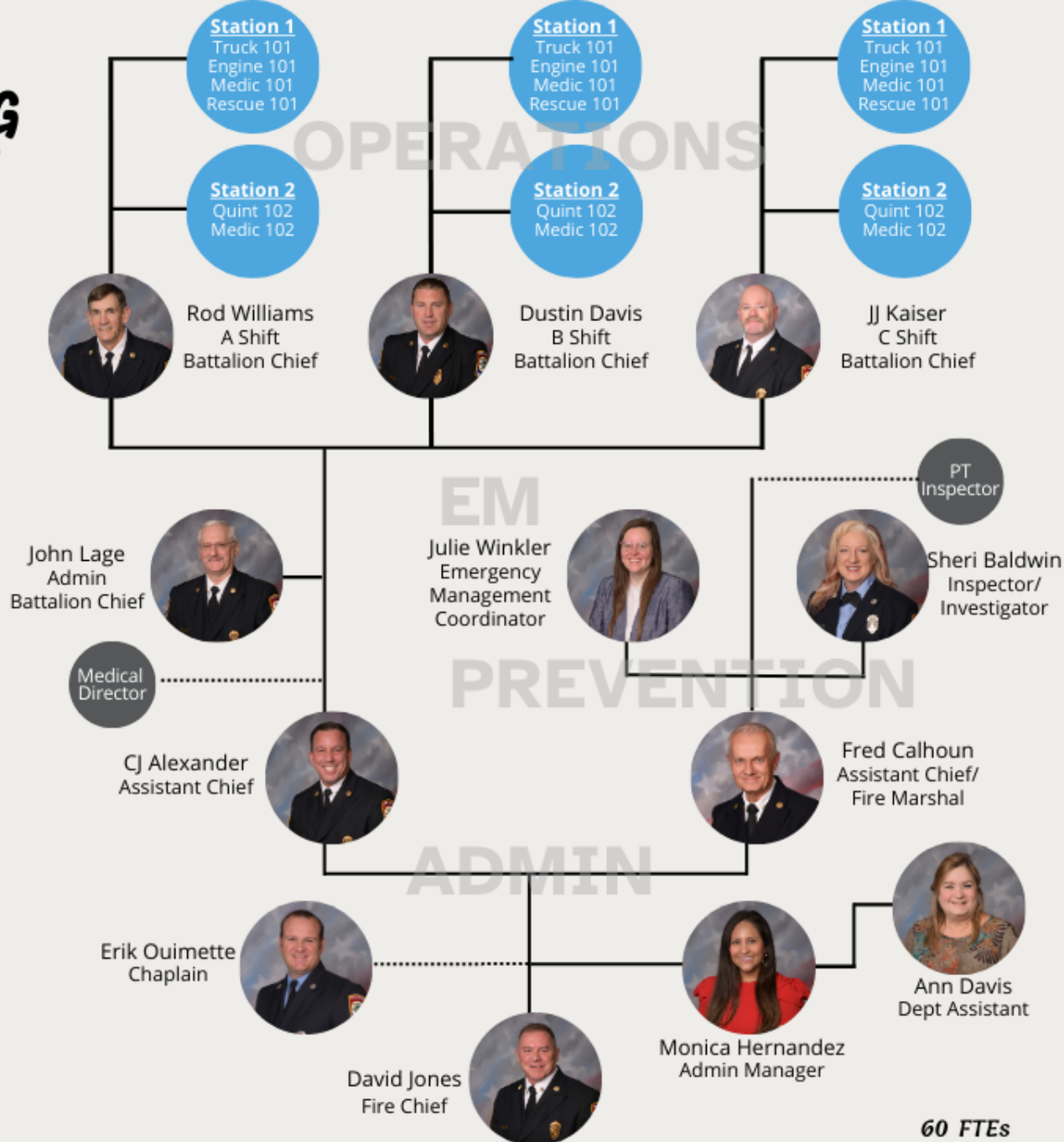
SAVE LIVES
PROTECT PROPERTY
SERVE WITH INTEGRITY



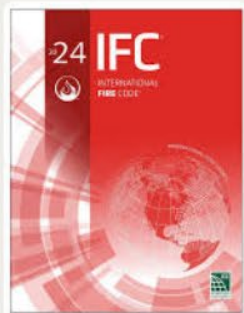
OUR
CORE VALUES

ACCOUNTABILITY
FAMILY
DUTY

AFD ORG CHART



ACCOMPLISHMENTS



PREVENTION HIGHLIGHTS

INSPECTIONS

734

PLANS REVIEWED

225

SDBR PROGRAM

BATTERIES INSTALLED

500

SURVEYS CONDUCTED

67

HOMES VISITED

115



PUBLIC EDUCATION & COMMUNITY ENGAGEMENT





EMERGENCY MANAGEMENT HIGHLIGHTS

- Graduated from Natl EM Basic Academy
- Supported Community Resiliency
- Plan work
- Dallas County EM Plan Agreement Renewed
- Arctic Freeze winter weather response
- Outdoor Warning Sirens activated (May)
- EM Program Status Presentation to Council
- Supported operations for Special Events
- Regional Committee & Exercise Participation
- Julie Elected as Secretary to REM Group



OPERATIONS

52

SWORN
PERSONNEL

8

FRONT LINE
APPARATUS

520

COMBINED YEARS
OF SERVICE

2

FIRE
STATIONS



MEDIC 101



MEDIC 102



ENGINE 101



QUINT 102



TRUCK 101



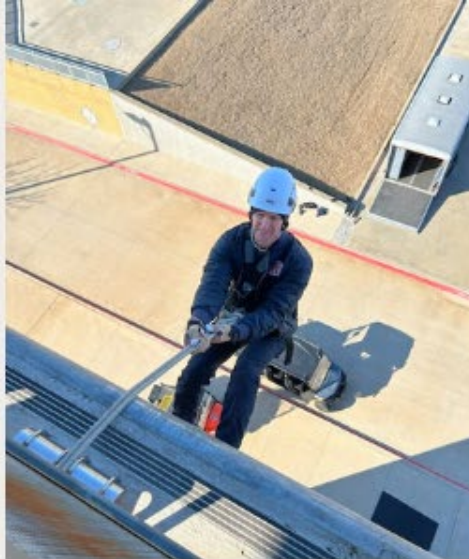
BATTALION 101



SQUAD 101



RESCUE 101



TRAINING
14250
STAFF HOURS SPENT
ON TRAINING





ANALYTICS

TYPE & NUMBER OF INCIDENTS

**INCIDENTS IN
ADDISON**

3442

**INCIDENTS IN
OTHER CITIES**

657

**TOTAL
INCIDENTS**

4099



FIRE

97
2.37%



EMS

2519
61.45%



**FALSE
ALARM**

514
12.54%



**SERVICE
CALL**

291
7.10%



**GOOD
INTENT**

529
12.91%



OTHER

149
3.63%

JANUARY

**BUSIEST MONTH -
434 INCIDENTS**

11.23

**AVERAGE NUMBER
OF CALLS PER DAY**

3PM

**BUSIEST TIME OF DAY
232 INCIDENTS**

ENGINE 101

**BUSIEST APPARATUS
1852 INCIDENTS**

TUESDAY

**BUSIEST DAY
653 INCIDENTS**



ADDISON

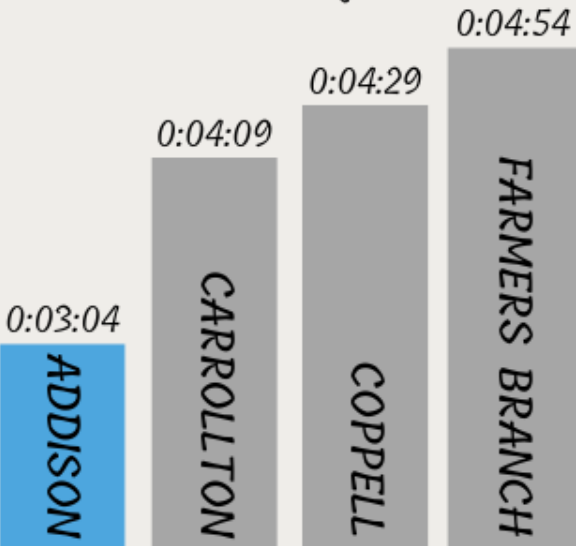
The image shows a close-up of the side of a fire truck. The name 'ADDISON' is written in large, gold, three-dimensional letters on a white background. Below the name, there is a red section with a black flame-like graphic. The top of the truck is black and reflective, showing some interior details. The overall image is a collage of statistics and a photograph of the fire truck.

QUAD CITIES COMPARISON



DISPATCH TO ON SCENE AVERAGE RESPONSE TIME

First Arriving Unit



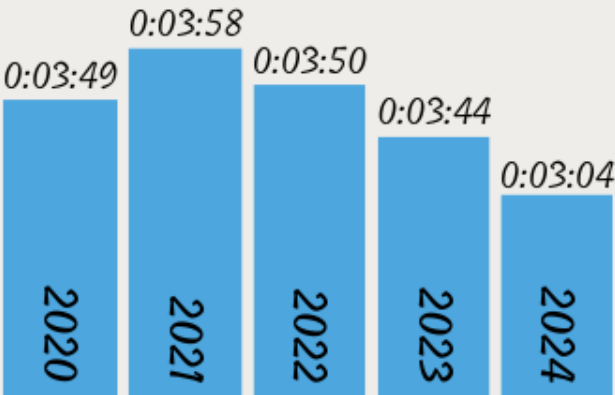
AID GIVEN
FARMERS BRANCH: 150 CARROLLTON: 154 DALLAS: 1

CALL VOLUME PER STATION

| | # Calls | # Stations | Avg # Calls Per Station |
|----------------|---------|------------|-------------------------|
| ADDISON | 4099 | 2 | 2049 |
| CARROLLTON | 15779 | 8 | 1972 |
| COPPELL | 4321 | 4 | 1080 |
| FARMERS BRANCH | 5957 | 3 | 1986 |

DISPATCH TO ON SCENE AVERAGE RESPONSE TIME

Addison - 5 Year Comparison





2 RETIREMENTS

3 PROMOTIONS

6 NEW HIRES

15 MILESTONE ANNIVERSARIES

Q102 RESPONDING TO VEHICLE FIRE





THANK YOU!



AFD | **ADDISON**
FIRE DEPARTMENT