

Beltway Drive Trail Project And Recommended Trail And Wayfinding Signage Standards

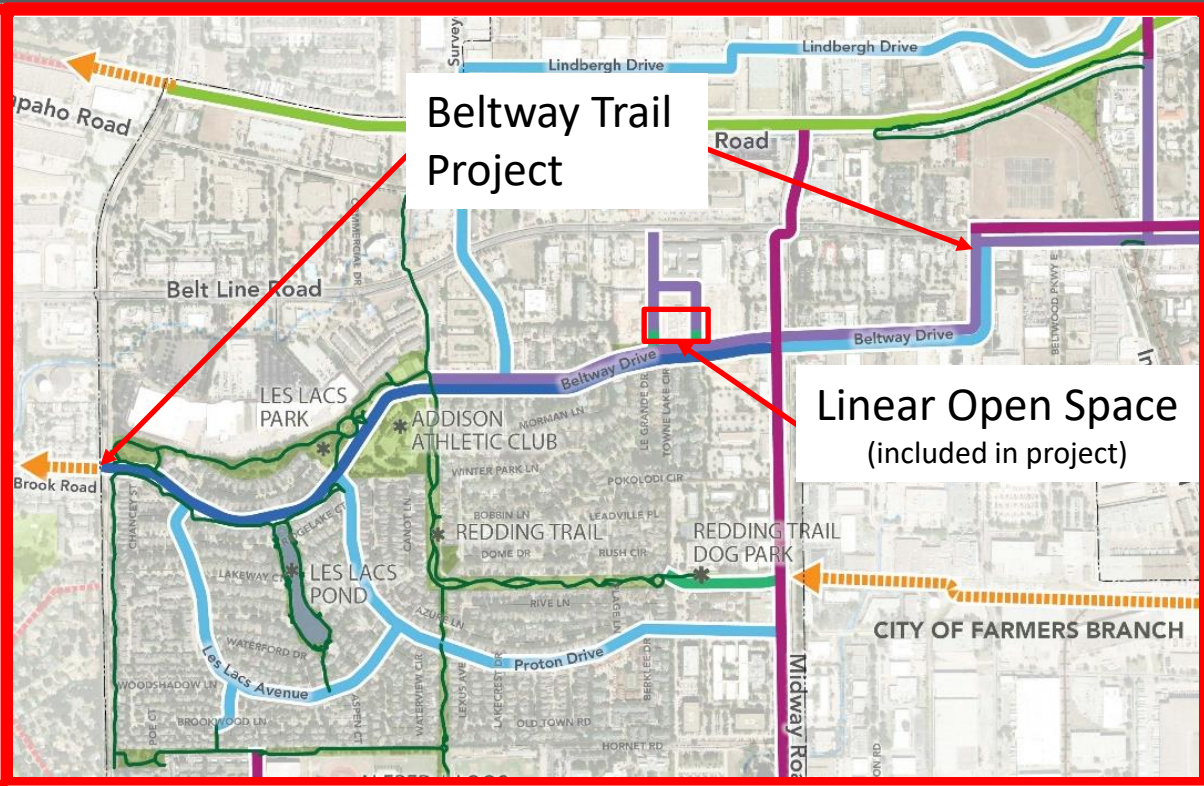
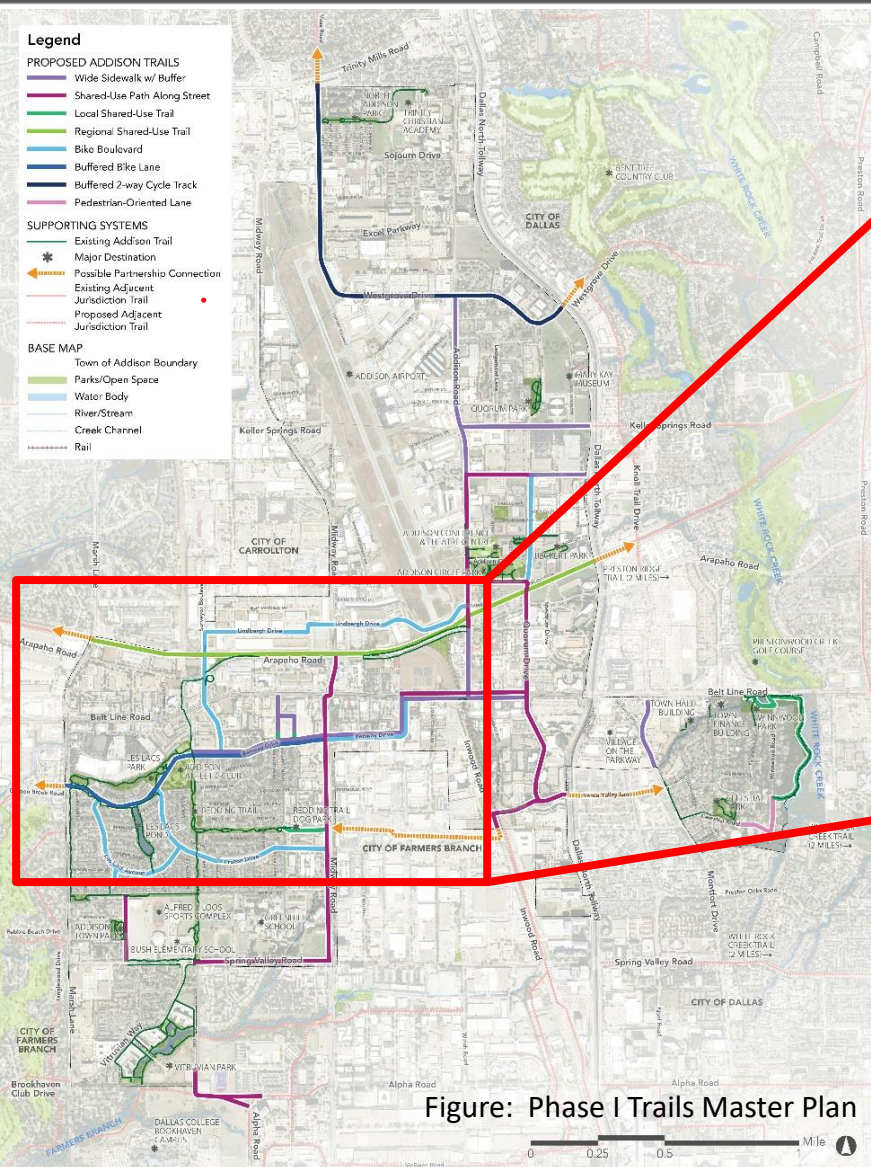
February 13, 2023

The logo for Addison, featuring the word "ADDISON" in a bold, blue, sans-serif font centered within a white circle. The circle is set against a blue background that has a white diagonal line running from the top-left to the bottom-right, creating a triangular shape on the right side of the slide.

ADDISON

- May 25, 2021- Council Adopted the City-Wide Trails Master Plan (CWTMP).
- The Adopted Plan Included Phase 1 Recommendations to include a trail along Beltway Drive as a priority project.
- December 14, 2021- Council Approved an Agreement with Moore Iacofano Goltsman, Inc. (MIG) for Professional Services for Conceptual Design of the Addison Beltway Trail Project and development of Trail and Wayfinding Signage Standards.
- August 23, 2022- Staff presentation to Council included results of public input and recommendations moving forward with conceptual design. Council provided input that was considered in the final development of the concept plan.
- November 2022- Review was made with comments added by DRC staff from multiple departments.
- December 21, 2022- With input from Council and Staff, the Final Concept plan from MIG was accepted.

Background



Enlargement: Phase 1 Trails Master Plan- Beltway Drive Trail

Markings and Pedestrian Crosswalk Conventions



Bike Lane Markings



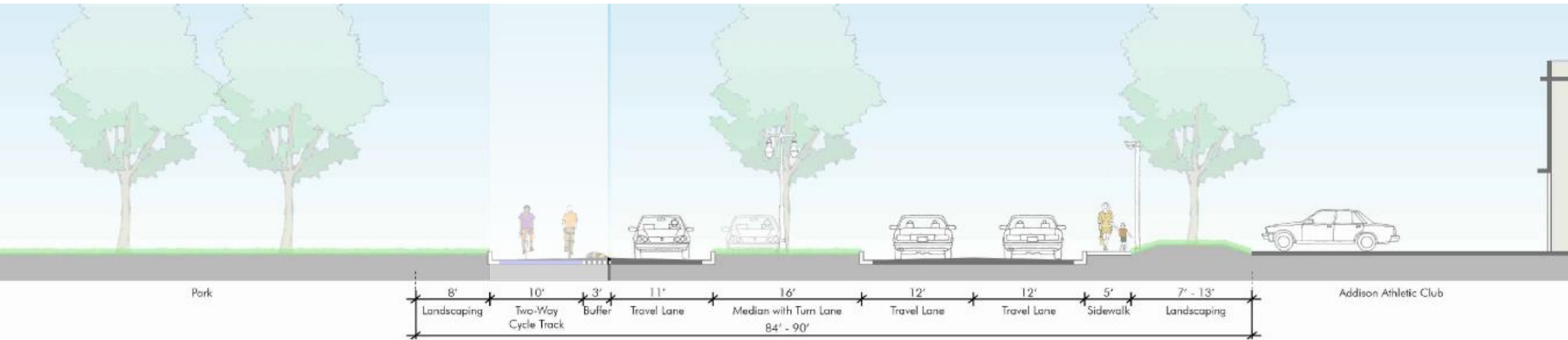
Rectangular Rapid Flashing Beacon



Two Stage Turn Bike Box

Beltway Drive Trail: Conceptual Plan

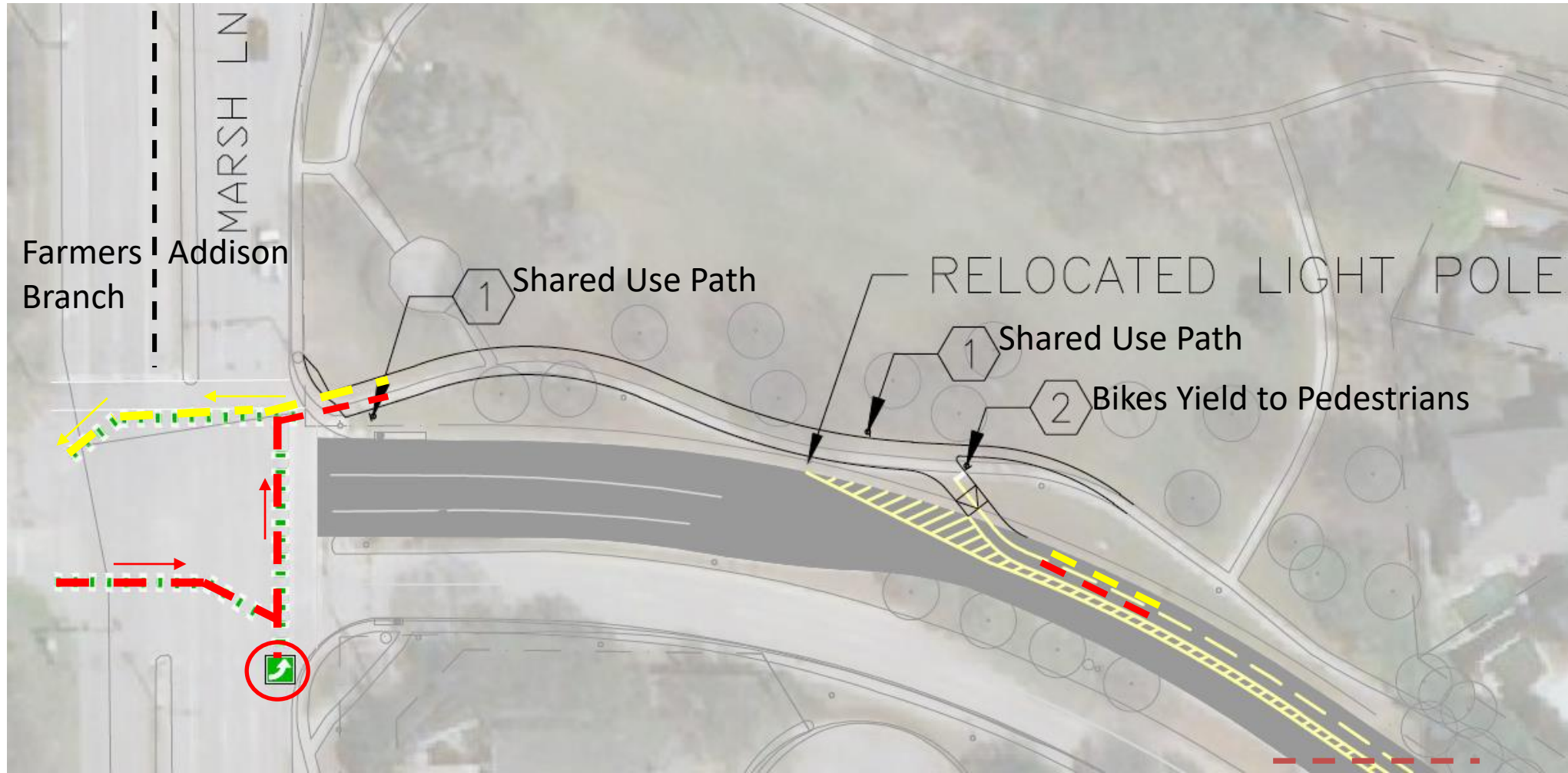
When approving MIG's Professional Services Agreement Council requested that MIG analyze if a buffered two-way cycle track on the north side of Beltway would be more functional than buffered bike lanes on the north and south side of the road due to drive approach conflicts at the Addison Athletic Club.



A. PROTECTED TWO-WAY BIKEWAY

Marsh Lane to Redding Trail

Beltway Drive Trail: Conceptual Plan



Marsh Lane to On-Road Trail on Beltway Drive

Match Line

Beltway Drive Trail: Conceptual Plan



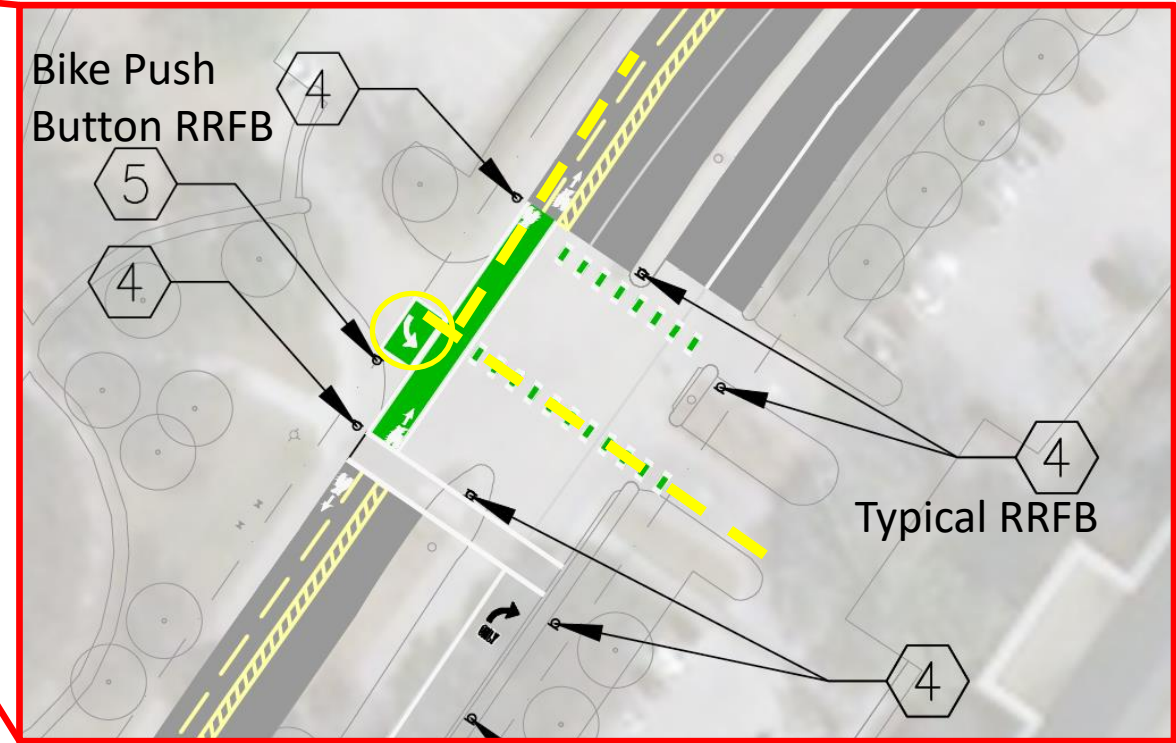
Page Break To Next

Les Lacs Avenue to Les Lacs Pond Trail

Beltway Drive Trail: Conceptual Plan



Page Break From Previous

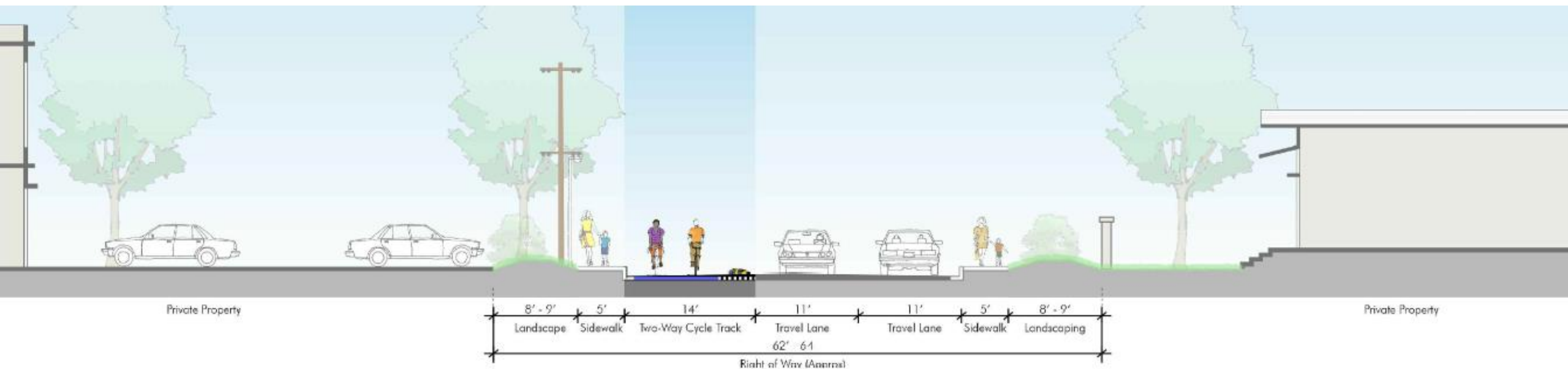


Page Break to Next

Addison Athletic Club and Les Lacs Park

Beltway Drive Trail: Conceptual Plan

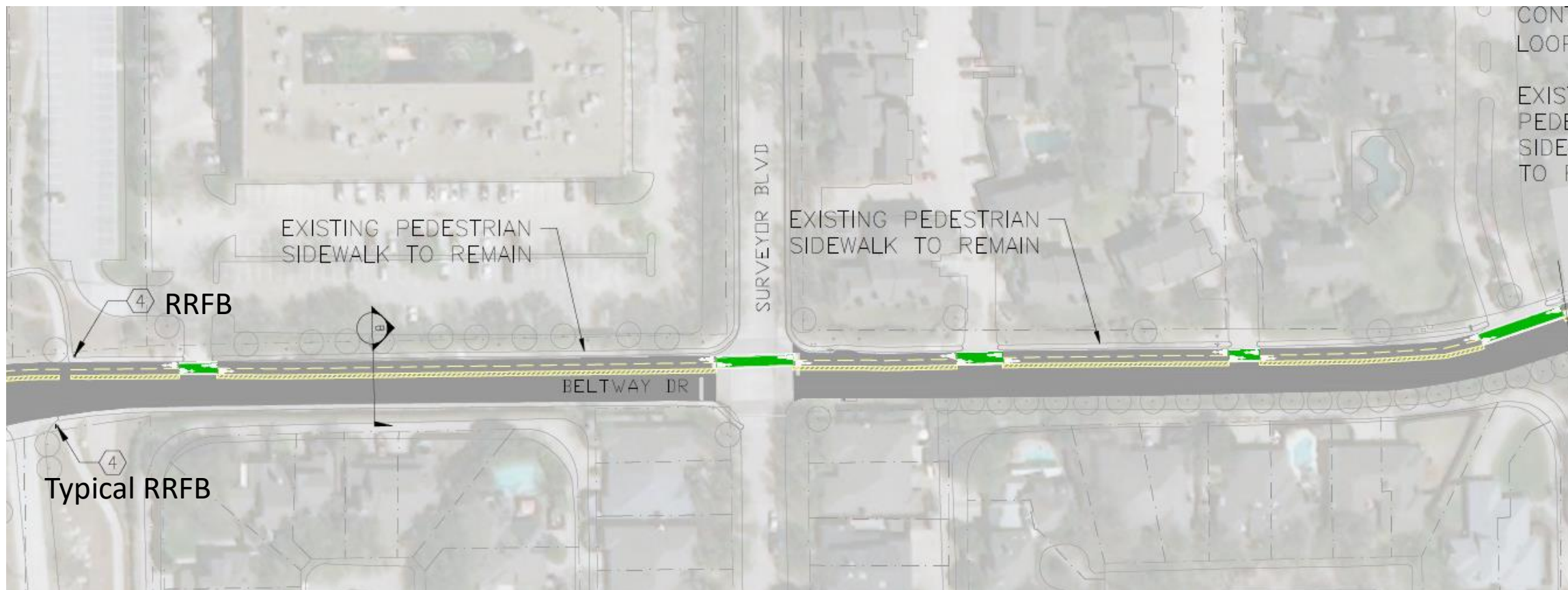
ADDISON



B. PROTECTED TWO-WAY BIKEWAY

Redding Trail to Greenspace South of Addison Grove

Beltway Drive Trail: Conceptual Plan

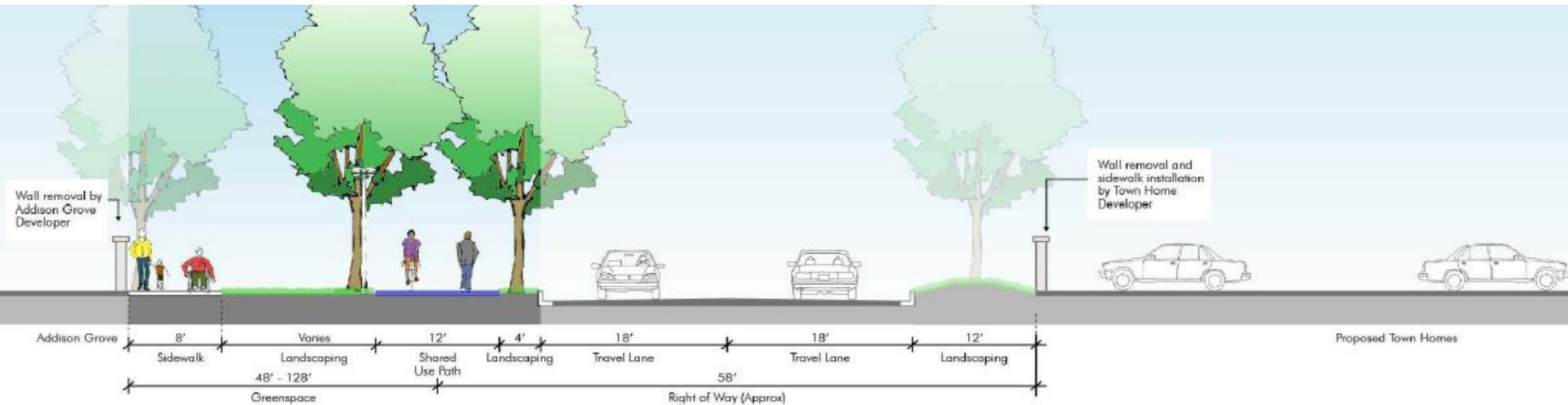


Page Break From Previous

Page Break to Next

Redding Trail to Morman Lane

Beltway Drive Trail: Conceptual Plan



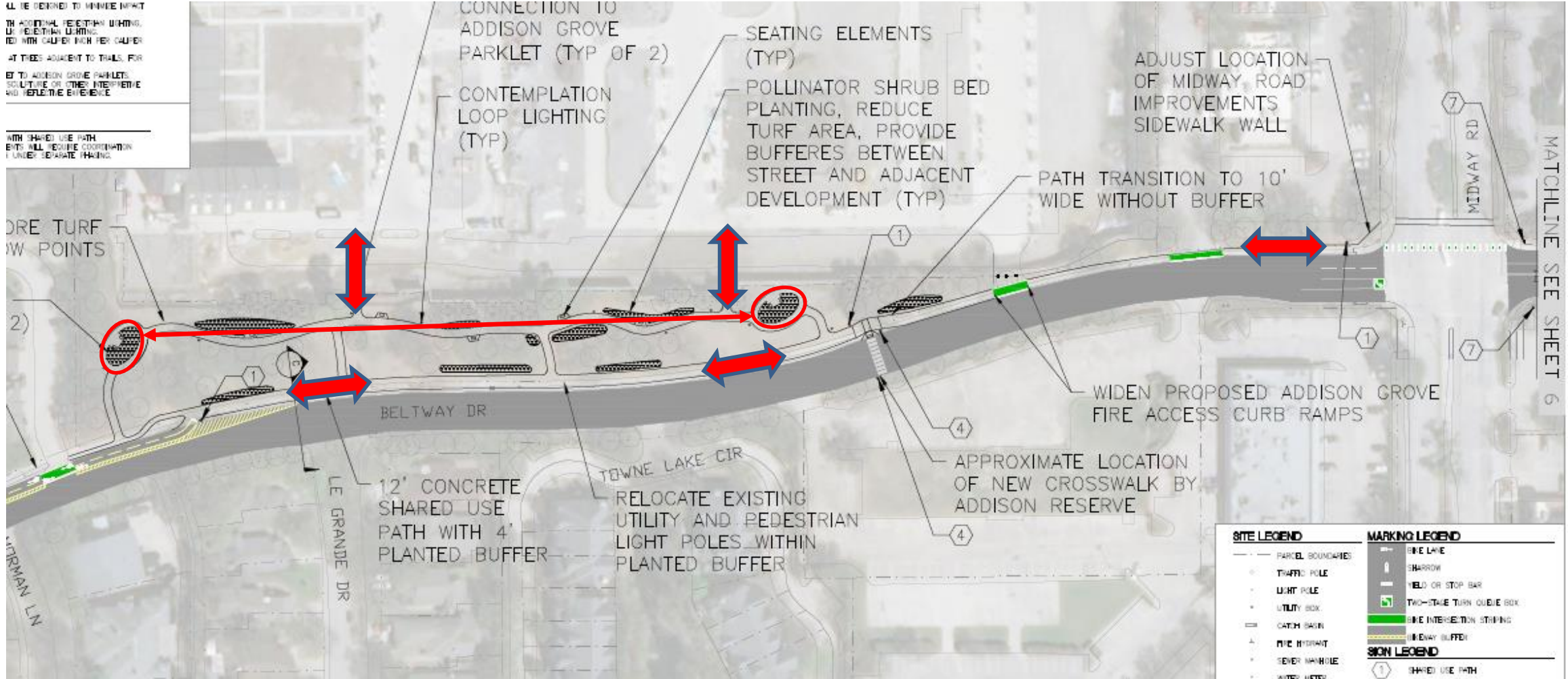
C. OFF-STREET SHARED-USE PATH AT GREENSPACE

Greenspace South of Addison Grove

Beltway Drive Trail: Conceptual Plan

ALL BE DESIGNED TO MINIMIZE IMPACT
 IN ADDITIONAL VEGETATION PLANTING,
 USE VEGETATION LIGHTING,
 TRAIL WITH GAULFERT HIGH PER GAULFERT
 AT THESE ADJACENT TO TRAILS, FOR
 BET TO ADDISON GROVE PARKLETS,
 SCULPTURE OR OTHER INTERPRETIVE
 AND RECREATIVE ENHANCEMENT

WITH SHARED USE PATH
 ENDS WILL REQUIRE COORDINATION
 FOR SEPARATE FINISHING

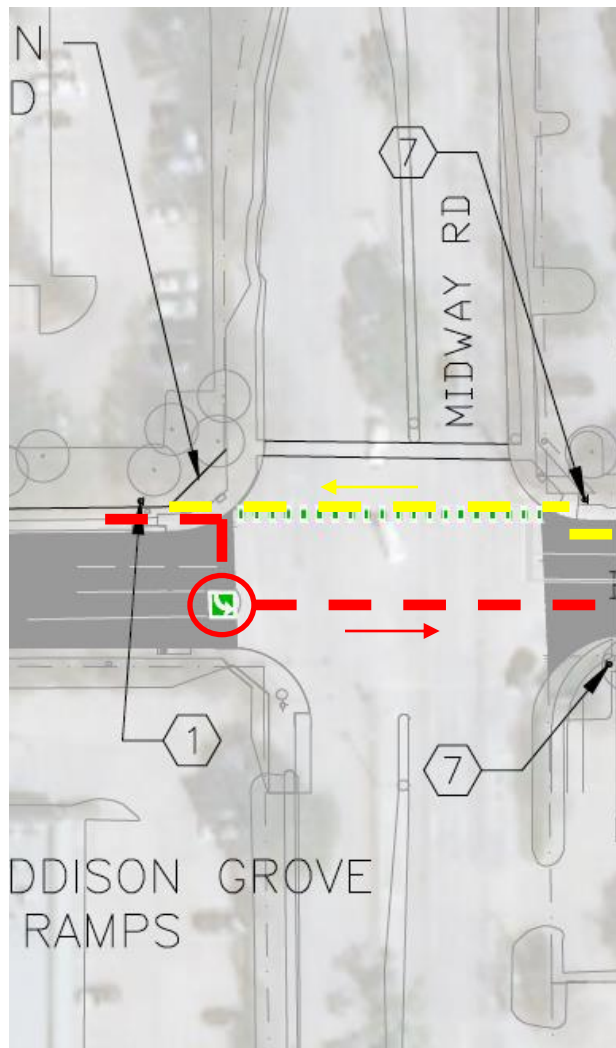


Page Break From Previous

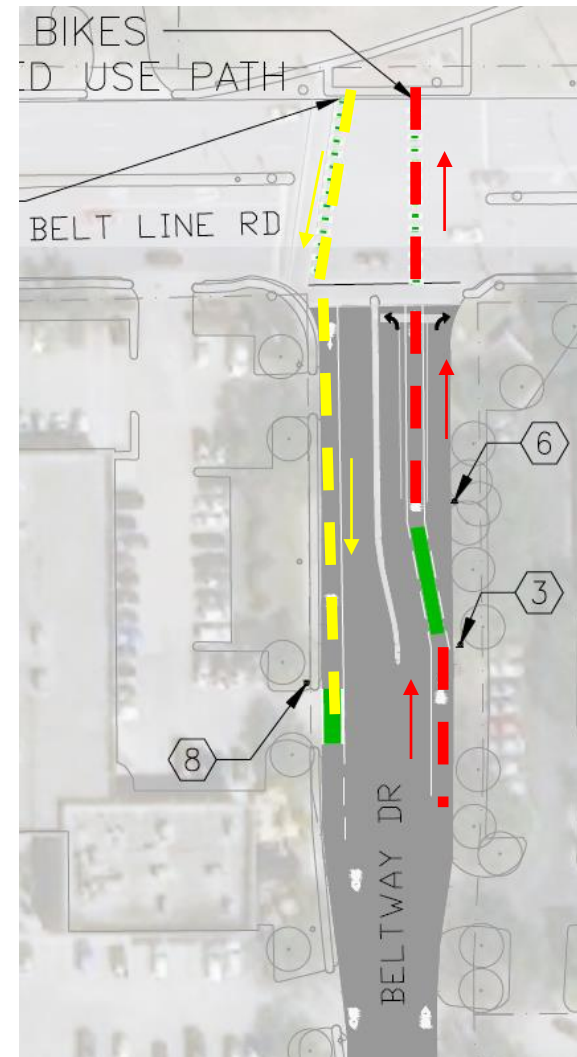
Page Break To Next

Greenspace South of Addison Grove to Midway Road

Beltway Drive Trail: Conceptual Plan



Beltway Drive and Midway Road



Beltway Drive and Belt Line Road

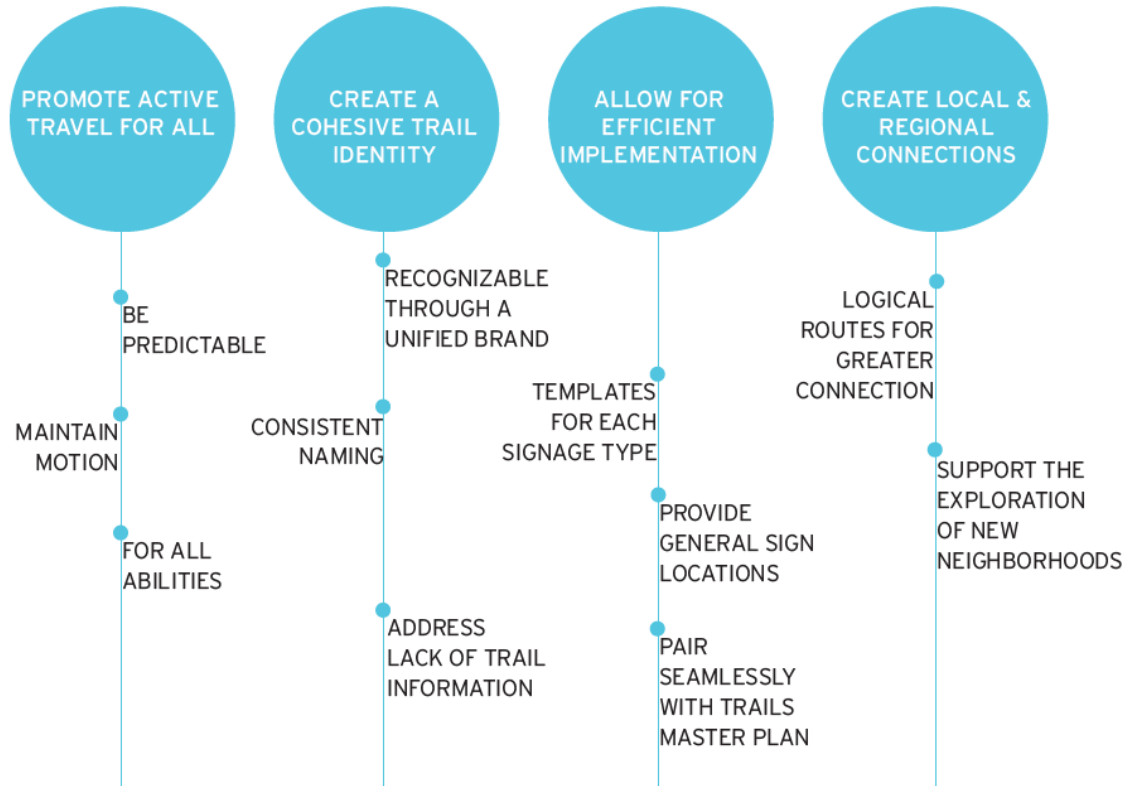
Right Lane Must Turn Right

Begin Right Turn Lane Yield to Bikes

Recommended Trail and Wayfinding Standards

ADDISON SIGNAGE & WAYFINDING

PURPOSE



Relevant Planning Documents that were considered when developing Addison Signage and Wayfinding

- City-Wide Trails Master Plan (CWTMP) (Addison)
- Addison Parks, Recreation and Open Space Master Plan (PROS) (Addison)
- Addison Master Transportation Plan (Addison)
- Fort Worth To Dallas Regional Wayfinding & Branding (NCTCOG)
- Klamath Falls Trails Wayfinding Plan (Precedent Study)

Recommended Trail and Wayfinding Standards



ADDISON SIGNAGE & WAYFINDING

SIGN TYPE KEY



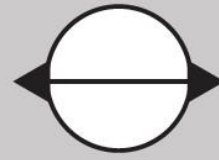
ID Gateway

Contains trail identifying information, useage types, a map of trail system including highlighted trail, and directional information panels. Placed at prominent trail entrance points.



ID Directional

Contains trail identifying information, useage types, and directional information panels. Placed at prominent trail entrance points. Placed along the trail at intersections with non-trail paths.



Directional

Contains minimal trail identifying information but has Addison branding, useage types and directional information panels. Placed at prominent trail junctions, especially intersections with other noted trails.



Mile Marker

Milage reference markers located within 50 feet of the measurement from the trailhead. Branded based on respective Loop Trail.



Park Regulatory

Displays rules and regulated activity within parks. Typically in the form of a list or bullets. We suggest updating current signage, shown below, with integrated styles from new wayfinding signs.



Destinations

- PRIMARY**
 - Addison Circle Park
 - Belt Line Road
 - Addison Transit Center
 - South Quorum
 - Addison Circle
 - Vitruvian
 - Farmers Branch
 - Carrollton
 - Dallas
 - Addison Conference & Theater Centre
 - Addison Athletic Club
- SECONDARY**
 - Beckert Park
 - Parkview Park
 - Quorum Park
 - Bosque Park
 - North Addison Park
 - Les Lacs Park & Pond
 - Celestial Park
 - Addison Town Park
 - Winnwood Park
 - Vitruvian Park
 - White Rock Creek Trail
 - Redding Trail
 - Dallas College Brookhaven Campus
 - Greenhill School
- TERTIARY**
 - Spruill Dog Park
 - Redding Trail Dog Park
 - Addison Community Garden
 - Trinity Christian Academy
 - Anne Frank Elementary
 - Bush Elementary
 - Addison Town Hall
 - Dome Park
 - Arapaho Park
 - Easement Park

Recommended Trail and Wayfinding Standards

DESIGN OPTION 2



Next Step

Consent Agenda Regular Session:

Consider action on a **Resolution Approving an Agreement with Moore Iacofano Goltsman, Inc. (MIG) for Professional Engineering Services for the Development of Construction Documents for the Addison Beltway Drive Trail Project; Authorizing the City Manager to Execute the Agreement** in an amount not to exceed \$223,000.