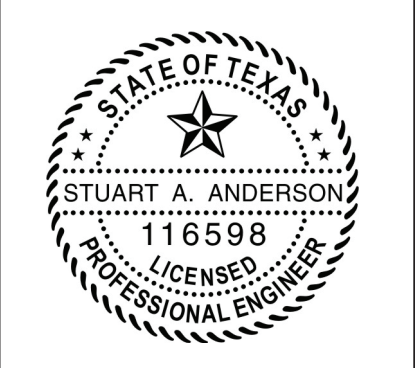


PROPOSED HAWKERS RESTAURANT
 4930 SF
 1 STORY

TREE MITIGATION CHART
 TREES TO BE REMOVED: 2 - 14" +/- CEDAR ELMS (28" TOTAL)
 TREES TO BE PLANTED: 1 - 8" CEDAR ELM
 REMAINING 20" MITIGATION TO BE PAID TO CITY BY APPLICANT

INTERPLAN
 INTERPLAN LLC
 F-3219
 ARCHITECTURE
 ENGINEERING
 PERMITTING
 220 E. CENTRAL PKWY, STE 4000
 ALTAMONTE SPRINGS, FL 32701
 407.645.5008



NO DATE REMARKS
 REVISIONS



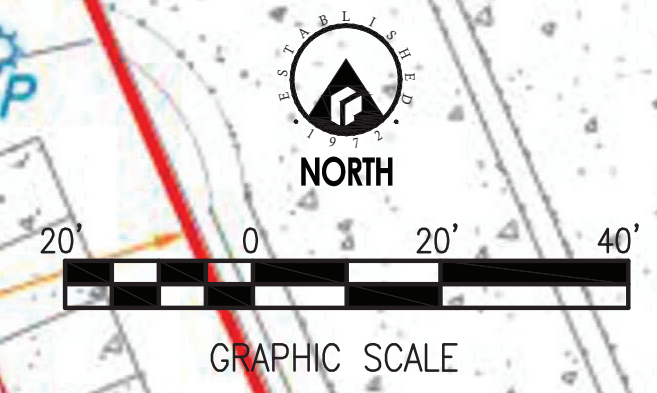
HAWKERS

VILLAGE OF THE PARKWAY
 BELT LINE ROAD
 DALLAS, TX

PROJECT NO: 2022.0201
 DATE: 9/2/2022

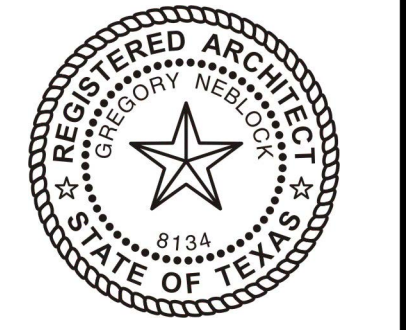
CP1L
 LANDSCAPE EXHIBIT 1

CHECKED: CB DRAWN: KC



P:\1\Hawkers\2022\0201 - Hawkers - Village of the Parkway - Belt Line Rd. Data, TxDOT CAD & Drawings\1 - Preliminary\2022\0201 CP1L.dwg
 9/1/2022 2:03:00 PM
 Interplan, DWG to PDF job, ASCII export D:\2022\0201\0201.dwg
 11/02/2024

COPYRIGHT © 2022 INTERPLAN LLC. ALL RIGHTS RESERVED. THESE DOCUMENTS TO THE ORIGINAL SET OF DRAWINGS FOR WHICH THEY WERE PREPARED. REPRODUCTION, CHANGES OR ASSIGNMENTS ARE PROHIBITED.



FURNITURE NOTES:

- ACCESSIBLE DINING SURFACES SHALL COMPLY WITH ICC/ANSI A117.1-2009 AND WITH CLEAR FLOOR SPACE AS INDICATED ON LIFE SAFETY PLAN.
- ALL FINISHES TO COMPLY WITH 2015 VCC: TABLE 803.9 AND TABLE 804, 806 AND 807 OF IFC.
- FURNITURE PROVIDED BY OWNER AND SHOWN FOR REPRESENTATION ONLY.
- REFER TO FURNITURE SCHEDULE ON THIS SHEET.
- ALL NEW EXTERIOR FURNITURE TO BE MOVABLE.
- FIRE PIT TO BE FINED TO FLOOR, GAS PIPE INSTALLED UNDERGROUND, CONDUIT FOR STARTER SWITCH TO BE INSTALLED UNDERGROUND.
- EXTERIOR TABLES: PAINTED WOOD SLAT TO MATCH BM 2017-40 "PEACHY KEEN"

INTERIOR FURNITURE SCHEDULE						
KEY	QTY.	TYPE	SIZE	MANUFACTURER	ITEM NUMBER & DESCRIPTION	NOTES
C-1	50	DINING CHAIR	STD. HT.	FLASH FURNITURE	XU-DG-TP001-GG** STACKABLE METAL CHAIR	PROVIDED BY HAWKERS
BS-1	32	LOOSE BARSTOOL	BAR HT.	INDUSTRY WEST	LUCY BAR STOOL/COLOR: YELLOW	PROVIDED BY HAWKERS
_U	1	OFFICE TASK CHAIR				PROVIDED BY HAWKERS

** EVEN SPLIT COLORS: MINT - DISTRESSED YELLOW - DISTRESSED ORANGE - GALVANIZED

INTERIOR TABLES							
KEY	QTY.	TYPE	SIZE	MANUFACTURER	STYLE / FINISH		NOTES
					TABLE TOP	TABLE BASE	
T2-NP-L	0	2 TOP LOW	24" X 30"	ROCKLESS TABLE	NEWS PRINT		PROVIDED BY HAWKERS
T2-WD-L	5	2 TOP LOW	24" X 30"	ROCKLESS TABLE	WOOD FINISH		PROVIDED BY HAWKERS
T3-WD-C	9	2 TOP CNTR HT.	28" X 30"	ROCKLESS TABLE	WOOD FINISH		
T4-MJ-B	1	4 TOP BAR HT.	48" X 30" 34" MAX HT.		MAHJONG TILES		
T2-MJ-B	1	2 TOP BAR HT.	24" X 30"	ROCKLESS TABLE	MAHJONG TILES		
T3-NP-C	6	2 TOP CNTR HT.	28" X 30"	ROCKLESS TABLE	NEWS PRINT	BOLT DOWN	PROVIDED BY HAWKERS
T4-NP-L	8	4 TOP LOW	48" X 30" 34" MAX HT.	ROCKLESS TABLE	NEWS PRINT	ADA	PROVIDED BY HAWKERS
T4S-MJ-B	2	4 TOP BAR HT.	36" X 36"	ROCKLESS TABLE	MAHJONG TILES		PROVIDED BY HAWKERS
T4S-NP-L	2	4 TOP BAR HT.	36" X 36"	ROCKLESS TABLE	NEWS PRINT		PROVIDED BY HAWKERS
T4-WD-L	2	4 TOP LOW	48" X 30" 34" MAX HT.	ROCKLESS TABLE	WOOD FINISH	ADA	PROVIDED BY HAWKERS
T4-NP-C	5	4 TOP CNTR HT.	60" X 30"	ROCKLESS TABLE	NEWS PRINT	BOLT DOWN	PROVIDED BY HAWKERS
T6-WD-C	0	6 TOP CNTR HT.	72" X 30"	ROCKLESS TABLE	WOOD FINISH	BOLT DOWN	PROVIDED BY HAWKERS
D-1	1	OFFICE DESK	64"X24"				PROVIDED BY HAWKERS

INTERIOR BOOTH / BANQUETTE							
KEY	QTY.	TYPE	SIZE	SEAT MATERIAL	BACK MATERIAL	FRAME	NOTES
B-1	3	SNGL-SIDED BANQUETTE	REF. PLAN STD. HT.	WOOD	WOOD	STEEL	PROVIDED BY HAWKERS
B-2	15 PAIRS	BOOTH	CNTR. HT. ON 6" CONC. PLTF. 28"W	WOOD	WOOD	STEEL	PROVIDED BY HAWKERS
B-3	5 PAIRS	4" BOOTH	CNTR. HT. ON 6" CONC. PLTF. 48"W	WOOD	WOOD	STEEL	PROVIDED BY HAWKERS
B-4	0	6" BOOTH	CNTR. HT. ON 6" CONC. PLTF. 48"W	WOOD	WOOD	STEEL	PROVIDED BY HAWKERS

EXTERIOR FURNITURE SCHEDULE						
KEY	QTY.	TYPE	SIZE	MANUFACTURER	ITEM NUMBER & DESCRIPTION	NOTES
BS-2	11	LOOSE BARSTOOL	BAR HT.	INDUSTRY WEST	LUCY BAR STOOL/COLOR: YELLOW	PROVIDED BY HAWKERS
C-2	64	DINING CHAIR	STD. HT.	FLASH FURNITURE	XU-DG-TP001-GG** STACKABLE METAL CHAIR	PROVIDED BY HAWKERS
C-3	2	ADIRONDACK CHAIR		EVERGREEN PATIO	MODERN STYLE-ORANGE	PROVIDED BY HAWKERS

EXTERIOR TABLES							
KEY	QTY.	TYPE	SIZE	MANUFACTURER	STYLE / FINISH		NOTES
					TABLE TOP	TABLE BASE	
T2-WD-L-EXT	6	2 TOP EXT	34" MAX HT. 24" X 30"		PAINTED WOOD SLATS		PROVIDED BY HAWKERS NOTE 7
T4S-WD-L-EXT	0	4 TOP EXT	34" MAX HT. 36" X 36"		WOOD FINISH	ADA	PROVIDED BY HAWKERS
T4R-WD-L-EXT	12	4 TOP EXT	34" MAX HT. 30" X 48"		PAINTED WOOD SLATS	ADA	PROVIDED BY HAWKERS NOTE 7

EXTERIOR BOOTH / BANQUETTE							
KEY	QTY.	TYPE	SIZE	SEAT MATERIAL	BACK MATERIAL	FRAME	NOTES
B-1-EXT	0	U-SHAPED SNGL-SIDED BANQUETTE	REF. PLAN STD. HT.				PROVIDED BY HAWKERS
B-2-EXT	0	U-SHAPED SINGLE SIDED BANQUETTE	REF. PLAN STD. HT.				PROVIDED BY HAWKERS

EXTERIOR PLANTERS, PROVIDED BY HAWKERS:
MANUFACTURE: VERDEK
METALLIC SERIES, 1-PIECE WEATHERED STEEL PLANTER BOX
SIZE: 38"W X 10" D X 30"H

GENERAL SUP NOTES:

- ANY REVISION TO THIS PLAN WILL REQUIRE TOWN APPROVAL AND WILL REQUIRE REVISIONS TO ANY CORRESPONDING PLANS TO AVOID CONFLICTS BETWEEN PLANS.
- BUILDING WITH AN AGGREGATE SUM OF 500 SQUARE FEET OR GREATER ON A LOT SHALL HAVE AUTOMATIC FIRE SPRINKLER INSTALLED THROUGHOUT ALL STRUCTURES. ALTERNATIVE FIRE PROTECTION MEASURES MAY BE APPROVED BY THE FIRE DEPARTMENT.
- ALL SIGNAGE IS SUBJECT TO TOWN APPROVAL.
- ALL FENCES AND RETAINING WALLS SHALL BE SHOWN ON THE SITE PLAN AND ARE SUBJECT TO BUILDING INSPECTION DIVISION APPROVAL.

THIS PLAN CONFORMS WITH DESIGN STANDARDS INCLUDED IN THE TOWN OF ADDISON TRANSPORTATION PLAN, WATER SYSTEM REQUIREMENTS, WASTE WATER SYSTEM REQUIREMENTS, AND DRAINAGE CRITERIA MANUAL.

PROPOSED NUMBER OF SEATS:
NUMBER OF PROPOSED SEATS (INSIDE) ADA TABLES: REQUIRED & PROVIDED = 162 SEATS
NUMBER OF PROPOSED SEATS (OUTSIDE) ADA TABLES: REQUIRED & PROVIDED = 105 SEATS
TOTAL NUMBER OF PROPOSED SEATS = 267 SEATS

ROOM SCHEDULE:

ROOM NAME	AREA (SQ FT)
SERVER'S AREA	337
DISHWASH	140
KITCHEN	540
OPEN KITCHEN	333
OFFICE	45
WALK-IN COOLER	186
RESTROOM & HALLWAY	420
LOUNGE / ENTRANCE	164
BAR	288
DINING	2,286
DRY STORAGE	100
TOTAL INT. AREA	= 5,215 S.F.
PATIO 1	457
PATIO 2	648
PATIO 3	315
TOTAL GROSS AREA	= 6,259 S.F.

1 18-3-22 SUP COMMENTS
NO DATE REMARKS
REVISIONS

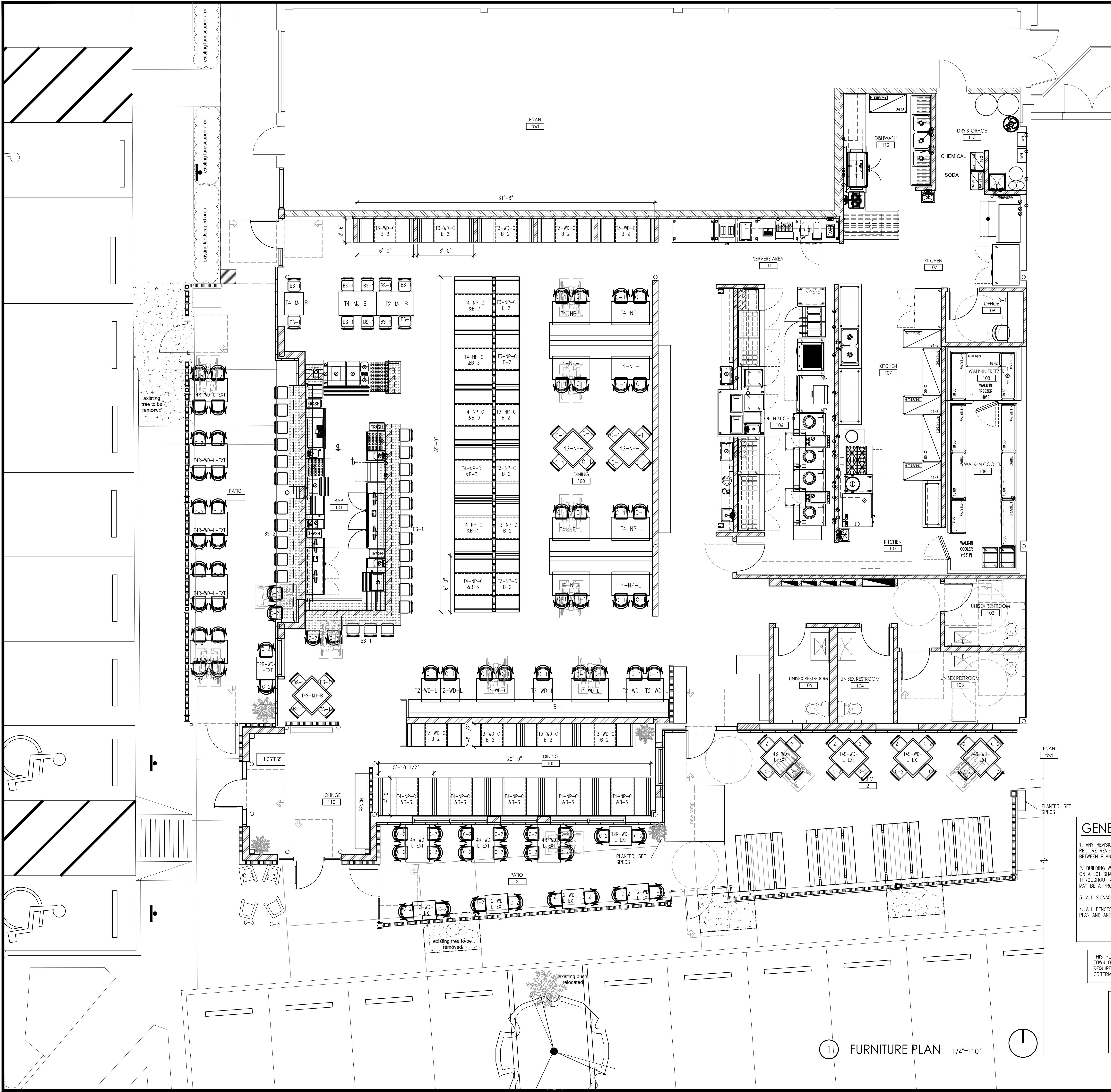


HAWKERS
VILLAGE ON THE PARKWAY
5100 BELT LINE RD.
SUITE #430B
DALLAS, TX 75254

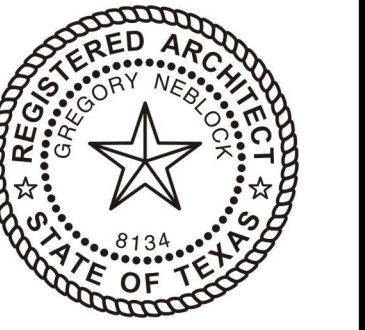
PROJECT NO: 2022.0201
DATE: 09-13-22

A1.5
FURNITURE PLAN

CHECKED: RC DRAWN: AL
rator - 10/10/2022 4:29:37 PM



1 FURNITURE PLAN 1/4"=1'-0"



EXTERIOR FINISH SCHEDULE:

- FINISH**
WALL: EGGSHELL
TRIM: GLOSS
DOOR: GLOSS
CEILING: FLAT
EXTERIOR: SEMI-GLOSS
WOOD AND GYP PAINT: LATEX
METAL: OIL BASED, W/ ANTI-RUST PRIMER
- ◊ PT-1 MANUF: SHERWIN-WILLIAMS
 COLOR: SNOWBOUND VERIFY
 NUMBER: SW 7004 (256-C2)
 NOTE: EXTERIOR WALL PAINT
- ◊ PT-2 MANUF: SHERWIN-WILLIAMS
 COLOR: "YELLOW" GOLDFINCH
 NUMBER: SW 6905
 NOTE: EXTERIOR DOORS
- ◊ PT-3 MANUF: BENJAMIN MOORE
 COLOR: GREEN WASH (MINT)
 NUMBER: 578 FLORIDA KEY
 NOTE: PLASTER / METAL CAP / STOREFRONT FRAME
- ◊ PT-4 MANUF: BENJAMIN MOORE
 COLOR: GREEN WASH
 NUMBER: 578 FLORIDA KEY
 NOTE: EXTERIOR WALLS
- METAL**
 ◊ MT-1 MANUF:
 PRODUCT: STEEL CANOPY
 COLOR: PT-2 (DARK GRAY)
 NOTE: @ BENT PLATE CHANNELS, ETC.
- STUCCO / EFIS**
 ◊ EF-1 MANUF: STO
 PRODUCT: STOTHERM ci
 COLOR: TO MATCH PT-1
 TEXTURE: SANDPEBBLE
 CONTROL JOINTS, 34 SQ FT MAX AREA
- BLOCK**
 ◊ BK-1 MANUF: CULTURE STONE BY BORAL
 PRODUCT: CAST-FIT
 SIZE: 8"X16"X12" THICK
 COLOR: PARCHMENT - PAINT AS INDICATED
 NOTE: W/ GR-1 MORTAR
- ◊ BK-2 MANUF: A-1 BLOCK CORP. or Equal
 PRODUCT: 8" SERIES CORNER BLOCK
 SIZE: 8"X16"X8" THICK
 PATTERN: STAGGERED, SEE ELEVATIONS
 COLOR: TO BE PAINTED PT-1
 NOTE: W/ GR-1 MORTAR
- ◊ BB-1 MANUF: CONCRETE COLLABORATIVE
 PRODUCT: TRESTLESS - MODERN BREEZE BLOCKS
 SIZE: 8"X8"X4" THICK
 PATTERN: CIRCLE
 COLOR: ALABASTER (WHITE)
 NOTE: W/ GR-1 MORTAR
- GROUT / MORTAR**
 ◊ GR-1 MANUF:
 PRODUCT: S or N MORTAR
 COLOR: MAGNOLIA ULTRA DARK

STORE FRONT NOTES:

- A. ALUMINUM STOREFRONT WINDOWS AND DOORS.
 YKK YES 45, PAINT TO MATCHING COLOR: ◊ PT-3

OWNER

HAWKERS ASIAN STREET FOOD
 54 W ORCHARD STREET, SUITE 250
 ORLANDO, FL 32801
 PH: (407) 255-2200

ARCHITECT

INTERPLAN LLC
 220 E. CENTRAL PKWY, SUITE 4000
 ALAMONTE SPRINGS, FL 32701
 ADR: GREGORY WELDOCK
 CONTACT: RAFAEL CARBONE
 PH: (407) 645-5008

DEMOLITION KEY NOTES:

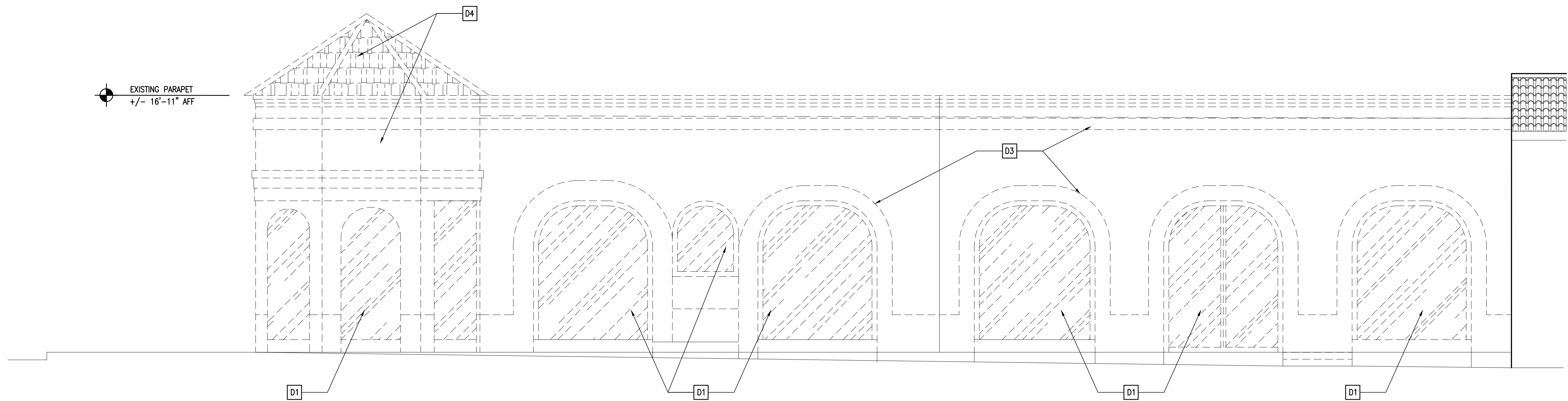
- D1. REMOVE EXISTING WINDOWS, TYP
 D2. REMOVE EXISTING DOOR AND FRAMES
 D3. REMOVE EXISTING STUCCO ACCENT BANDS
 D4. REMOVE ENTIRE CORNER TOWER ROOF AND WALLS
 D5. EXISTING WALL TO BE REMOVED, REFER TO DEMOLITION FLOOR PLAN

KEY NOTES:

1. DECORATIVE BREEZE BLOCK MASONRY UNITS
 2. DECORATIVE BLOCK TILES, INSTALL IN "SMOK" PATTERN
 3. NEW EXTERIOR NEON WALL SIGNED LIGHT
 4. CANTILEVERED STEEL BEAM WRAPPED WITH WOOD FINISH
 5. DECORATIVE "L" CORNER BLOCKS, INSTALL IN "STAGGERED" PATTERN.
 PAINT COLOR: PT-1
 6. NEW METAL CANOPY W/ SMOOTH FASCIA
 7. 4"x4" WALL TILE, SEE INTERIOR FINISH SCHEDULE
 8. NEW PARAPET METAL CAP, COLOR:
 9. NEW EIFS / STUCCO FINISH
 10. PROPOSED LOCATION FOR FUTURE SIGNAGE BY TENANT
 11. NEW PATO CONCRETE FLOOR AND RETAINING WALL
 12. 8" SILL CURB AT ALL WINDOWS, PAINT TO MATCH WALL
 13. NEW ACCESSIBLE RAMP
 14. BREEZE BLOCK LOW WALL, SEE FLOOR PLAN
 15. CANOPY SUPPORT COLUMN, PAINT SAME COLOR AS CANOPY FASCIA
 16. 8"x8" SQUARE BLOCK INSTALLED TO WRAP STEEL COLUMN
 17. STUCCO AND BREEZE BLOCK AT TOWER TO BE PAINTED PT-4, THEN PAINT ONLY THE FACE OF THE BREEZE BLOCKS WITH A ROLLER, COLOR: PT-1.

FACADE PLAN NOTES:

1. THIS FACADE PLANS IS FOR CONCEPTUAL PURPOSES ONLY.
 ALL BUILDING PLANS REQUIRE REVIEW AND APPROVAL BY DEVELOPMENT SERVICES
 2. ALL MECHANICAL UNITS SHALL BE SCREENED FROM PUBLIC VIEW AS REQUIRED BY THE ZONING ORDINANCE.
 3. WHEN PERMITTED, EXPOSED UTILITY BOXES AND CONDUITS SHALL BE PAINTED TO MATCH THE BUILDING
 4. ALL SIGNAGE AREAS AND LOCATIONS ARE SUBJECT TO APPROVAL BY DEVELOPMENT SERVICES
 5. ROOF ACCESS SHALL BE PROVIDED INTERNALLY, UNLESS OTHERWISE PERMITTED BY THE CHIEF BUILDING OFFICIAL.

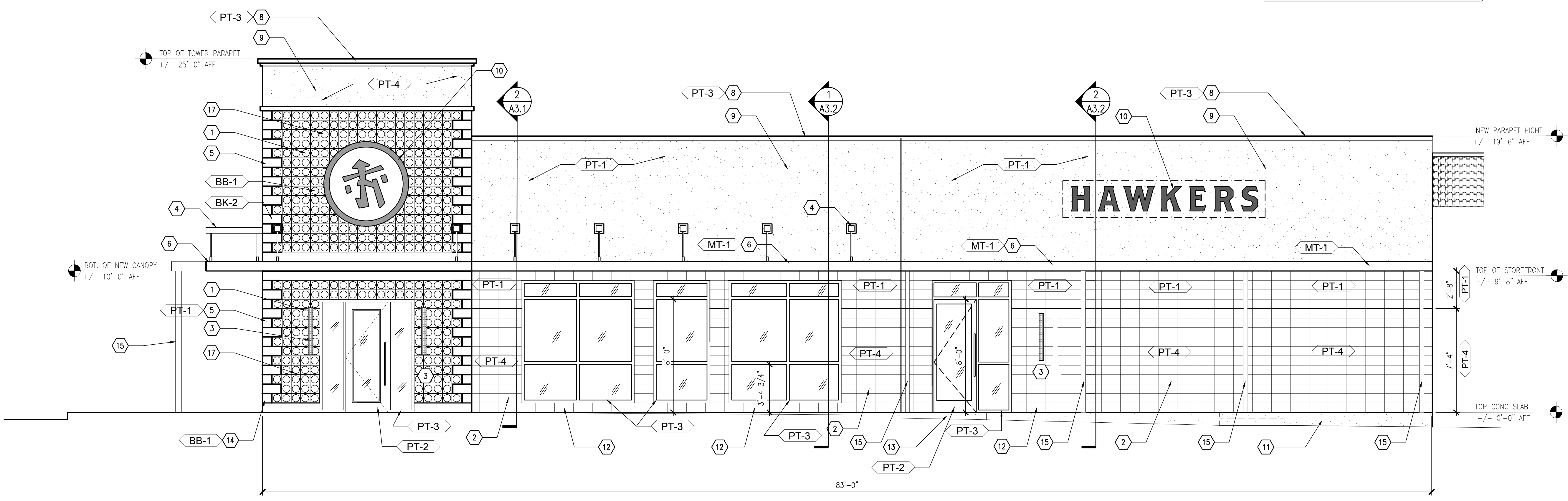


1 SOUTH ELEVATION- EXISTING / DEMO 1/4" = 1'-0"

MATERIALS CALCULATION TABLE:

TOTAL SURFACE AREA PER ELEVATION: 1,700 S.F.

MATERIAL	AREA	PERCENTAGE
MASONRY / TILES	701 S.F.	41%
STUCCO/EIFS	658 S.F.	39%
GLAZING & FRAME	283 S.F.	17%
METAL / CANOPY	58 S.F.	03%



1 SOUTH ELEVATION - NEW 1/4" = 1'-0"

NO	DATE	REMARKS

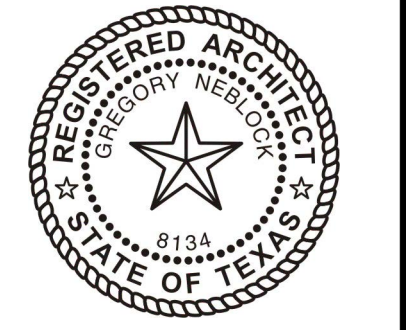


HAWKERS
 VILLAGE ON THE PARKWAY
 5100 BELT LINE RD.
 SUITE #430B
 DALLAS, TX 75254

PROJECT NO: 2022.0201
 DATE: 09-13-22

A2.0
 EXTERIOR ELEVATIONS

CHECKED: RC DRAWN: FS
 rcfcar - 10/10/2022 4:29:37 PM



EXTERIOR FINISH SCHEDULE:

- FINISH**
- WALL: EGGSHELL
 - TRIM: GLOSS
 - DOOR: GLOSS
 - CEILING: FLAT
 - EXTERIOR: SEMI-GLOSS
 - WOOD AND GYP PAINT: LATEX
 - METAL: OIL BASED, W/ ANTI-RUST PRIMER
- PT-1** MANUF: SHERWIN-WILLIAMS
COLOR: SNOWBOUND VERIFY
NUMBER: SW 7004 (256-C2)
NOTE: EXTERIOR WALL PAINT
- PT-2** MANUF: SHERWIN-WILLIAMS
COLOR: "YELLOW" GOLDFINCH
NUMBER: SW 6905
NOTE: EXTERIOR DOORS
- PT-3** MANUF: BENJAMIN MOORE
COLOR: GREEN WASH (MINT)
NUMBER: 578 FLORIDA KEY
NOTE: PLASTER / METAL CAP / STOREFRONT FRAME
- PT-4** MANUF: BENJAMIN MOORE
COLOR: GREEN WASH
NUMBER: 578 FLORIDA KEY
NOTE: EXTERIOR WALLS
- METAL**
- MT-1** MANUF:
PRODUCT: STEEL CANOPY
COLOR: PT-2 (DARK GRAY)
NOTE: @ BENT PLATE CHANNELS, ETC.
- STUCCO / EFIS**
- EF-1** MANUF: STUCCO
PRODUCT: STOTHERM ci
COLOR: TO MATCH PT-1
TEXTURE: SANDPEBBLE
CONTROL JOINTS, 34 SQ FT MAX AREA
- BLOCK**
- BK-1** MANUF: CULTURE STONE BY BORAL
PRODUCT: CAST-FIT
SIZE: 8"x16"x1-1/2" Thick
COLOR: PARCHEMENT - PAINT AS INDICATED
NOTE: W/ GR-1 MORTAR
- BK-2** MANUF: A-1 BLOCK CORP. or Equal
PRODUCT: 8" SERIES CORNER BLOCK
SIZE: 8"x16"x4" Thick
PATTERN: STAGGERED, SEE ELEVATIONS
COLOR: TO BE PAINTED PT-1
NOTE: W/ GR-1 MORTAR
- BB-1** MANUF: CONCRETE COLLABORATIVE
PRODUCT: TRESTLESS - MODERN BREEZE BLOCKS
SIZE: 8"x8"x4" Thick
PATTERN: CIRCLE
COLOR: ALABASTER (WHITE)
NOTE: W/ GR-1 MORTAR
- GROUT / MORTAR**
- GR-1** MANUF:
PRODUCT: S or N MORTAR
COLOR: MAGNOLIA ULTRA DARK

STORE FRONT NOTES:

- A. ALUMINUM STOREFRONT WINDOWS AND DOORS,
YKK YES 45, PAINT TO MATCHING COLOR: <PT-3>

OWNER

HAWKERS ASIAN STREET FOOD
54 W CHURCH STREET, SUITE 250
ORLANDO, FL 32801
PH: (407) 255-2200

ARCHITECT

INTERPLAN LLC
220 E. CENTRAL PKWY, SUITE 4000
ALTA MONTA SPRINGS, FL 32701
ADR: GREGORY NEUBACK
CONTACT: RAFAEL CARBONE
PH: (407) 645-5008

DEMOLITION KEY NOTES:

- D1. REMOVE EXISTING WINDOWS, TYP
D2. REMOVE EXISTING DOOR AND FRAMES
D3. REMOVE EXISTING STUCCO ACCENT BANDS
D4. REMOVE ENTIRE CORNER TOWER ROOF AND WALLS
D5. EXISTING WALL TO BE REMOVED, REFER TO DEMOLITION FLOOR PLAN

KEY NOTES:

1. DECORATIVE BREEZE BLOCK MASONRY UNITS
2. DECORATIVE BLOCK TILES, INSTALL IN "STACK" PATTERN
3. NEW EXTERIOR NEON WALL SCENE LIGHT
4. CANTILEVERED STEEL BEAM WRAPPED WITH WOOD FINISH
5. DECORATIVE "Y" CORNER BLOCKS, INSTALL IN "STAGGERED" PATTERN, PAINT COLOR: PT-1
6. NEW METAL CANOPY W/ SMOOTH FASCIA
7. 4"x4" WALL TILE, SEE INTERIOR FINISH SCHEDULE
8. NEW PARAPET METAL CAP, COLOR:
9. NEW EIFS / STUCCO FINISH
10. PROPOSED LOCATION FOR FUTURE SIGNAGE BY TENANT
11. NEW PATIO CONCRETE FLOOR AND RETAINING WALL
12. 8" SILL CURB AT ALL WINDOWS, PAINT TO MATCH WALL
13. NEW ACCESSIBLE RAMP
14. BREEZE BLOCK LOW WALL, SEE FLOOR PLAN
15. CANOPY SUPPORT COLUMN, PAINT SAME COLOR AS CANOPY FASCIA
16. 8"x8" SQUARE BLOCK INSTALLED TO WRAP STEEL COLUMN
17. STUCCO AND BREEZE BLOCK AT TOWER TO BE PAINTED PT-4, THEN PAINT ONLY THE FACE OF THE BREEZE BLOCKS WITH A ROLLER, COLOR: PT-1.

FACADE PLAN NOTES:

1. THIS FACADE PLANS IS FOR CONCEPTUAL PURPOSES ONLY.
ALL BUILDING PLANS REQUIRE REVIEW AND APPROVAL BY DEVELOPMENT SERVICES
2. ALL MECHANICAL UNITS SHALL BE SCREENED FROM PUBLIC VIEW AS REQUIRED BY THE ZONING ORDINANCE.
3. WHEN PERMITTED, EXPOSED UTILITY BOXES AND CONDUITS SHALL BE PAINTED TO MATCH THE BUILDING
4. ALL SIGNAGE AREAS AND LOCATIONS ARE SUBJECT TO APPROVAL BY DEVELOPMENT SERVICES
5. ROOF ACCESS SHALL BE PROVIDED INTERNALLY, UNLESS OTHERWISE PERMITTED BY THE CHIEF BUILDING OFFICIAL.

NO DATE REMARKS
REVISIONS



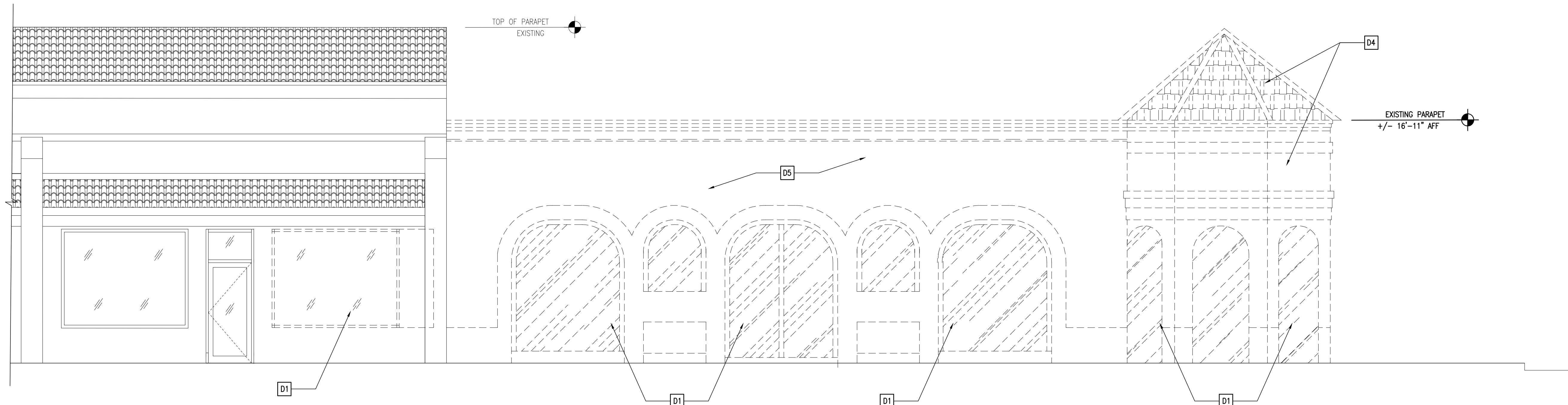
HAWKERS
VILLAGE ON THE PARKWAY
5100 BELT LINE RD.
SUITE #430B
DALLAS, TX 75254

PROJECT NO: 2022.0201
DATE: 09-13-22

A2.1
EXTERIOR ELEVATIONS

CHECKED: RC DRAWN: FS

rfatcar - 10/10/2022 4:29:37 PM

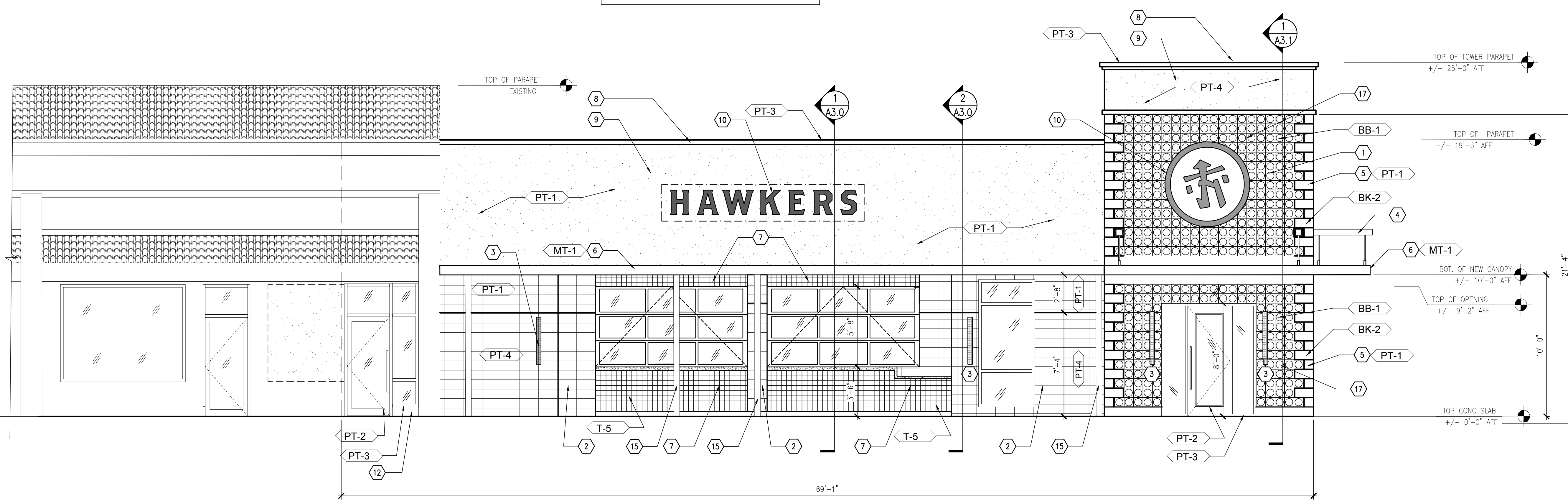


2 WEST ELEVATION - EXISTING / DEMO 1/4" = 1'-0"

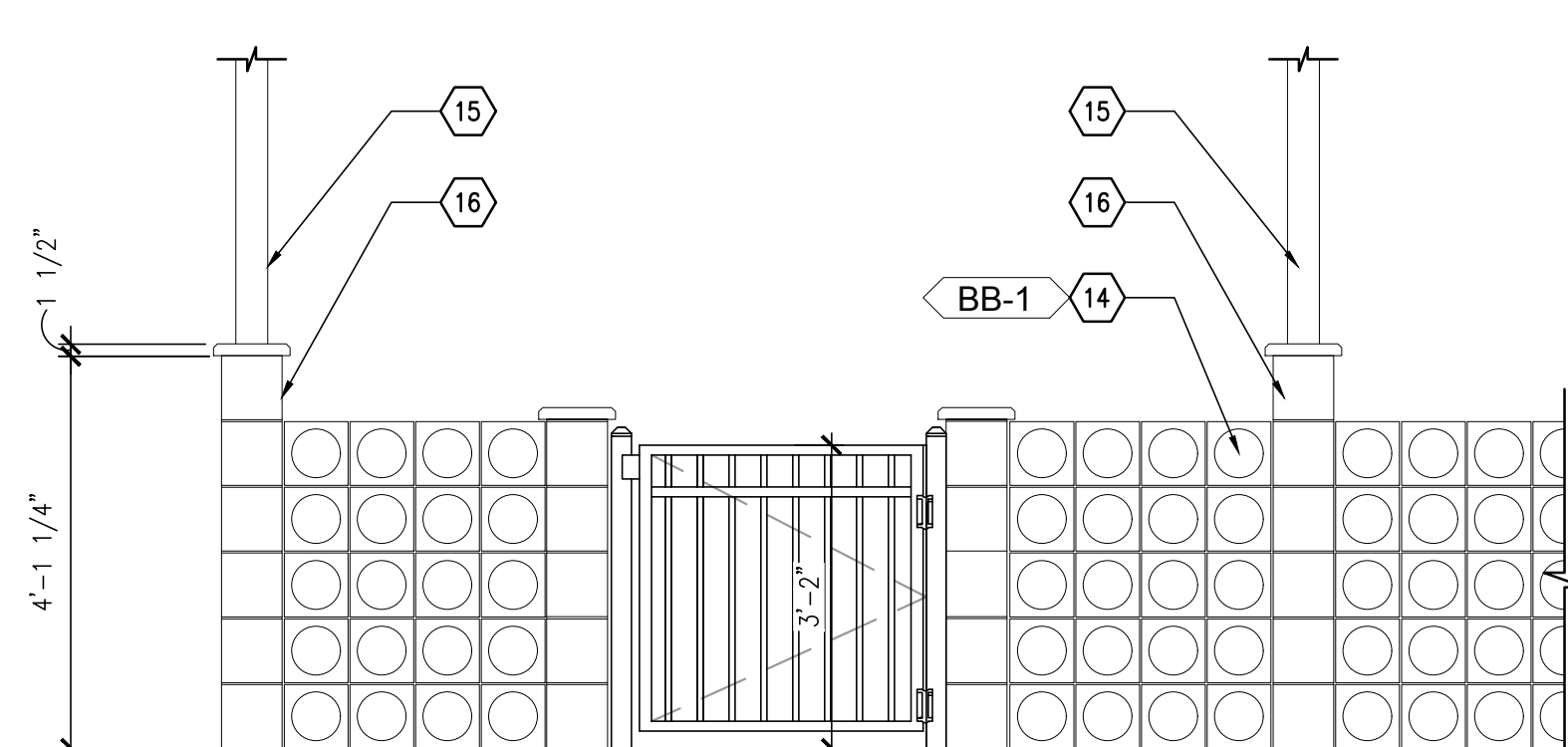
MATERIALS CALCULATION TABLE:

TOTAL SURFACE AREA PER ELEVATION: 1,429 S.F.

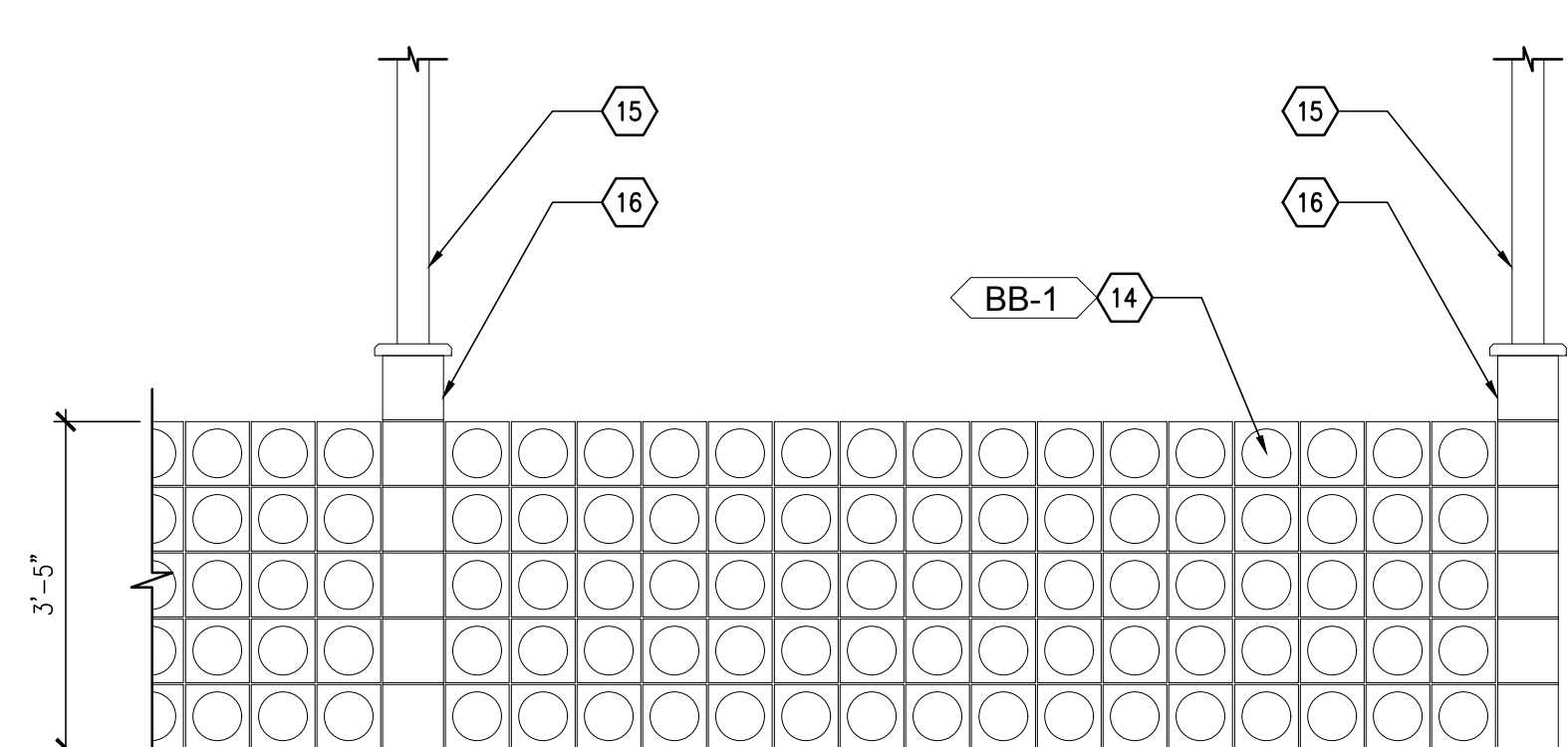
MATERIAL	AREA	PERCENTAGE
MASONRY / TILES	601 S.F.	42%
STUCCO/EFIS	560 S.F.	39%
GLAZING & FRAME	224 S.F.	16%
METAL / CANOPY	44 S.F.	3%



2 WEST ELEVATION - NEW 1/4" = 1'-0"



3 PARTIAL SCREEN WALL ELEVATION 1/2" = 1'-0"



4 PARTIAL SCREEN WALL ELEVATION 1/2" = 1'-0"