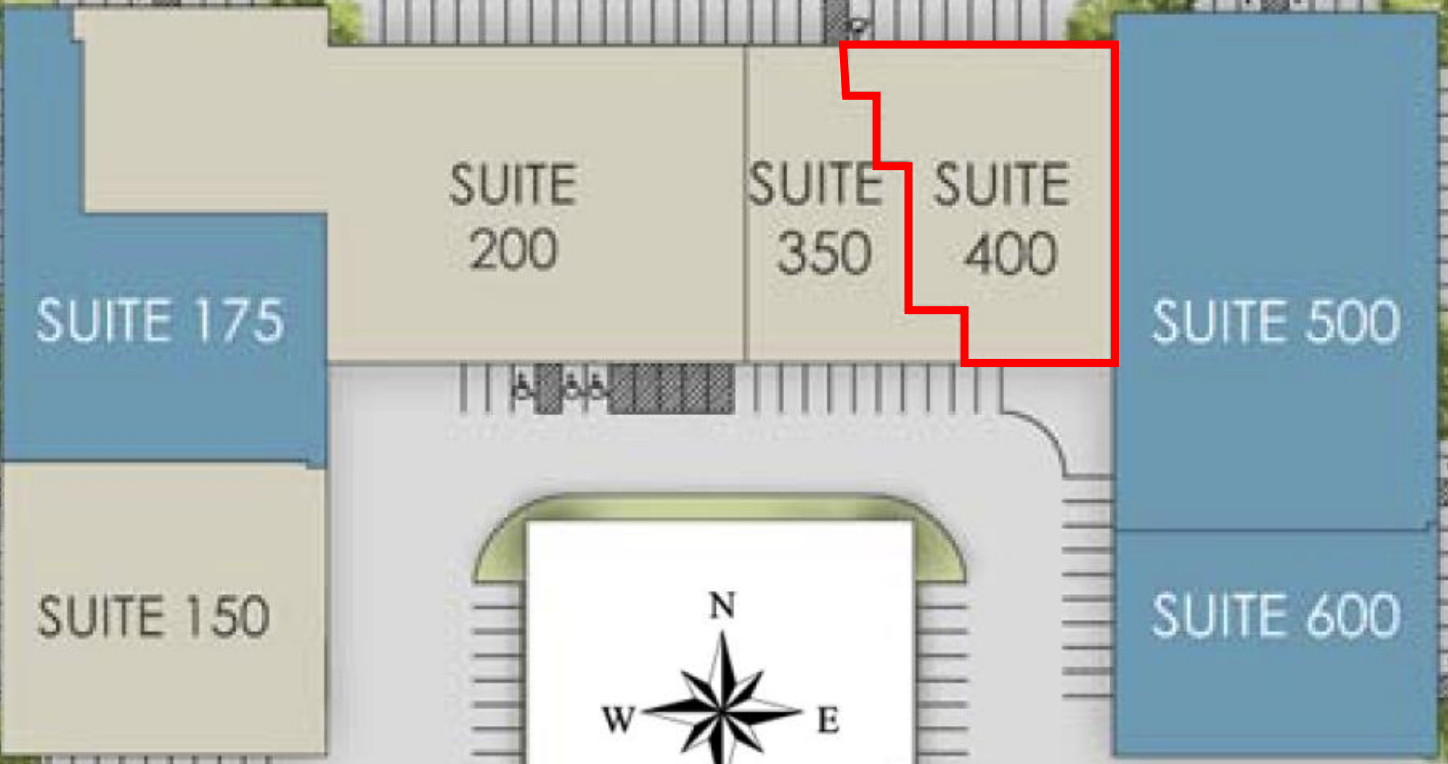


EXCEL PARKWAY

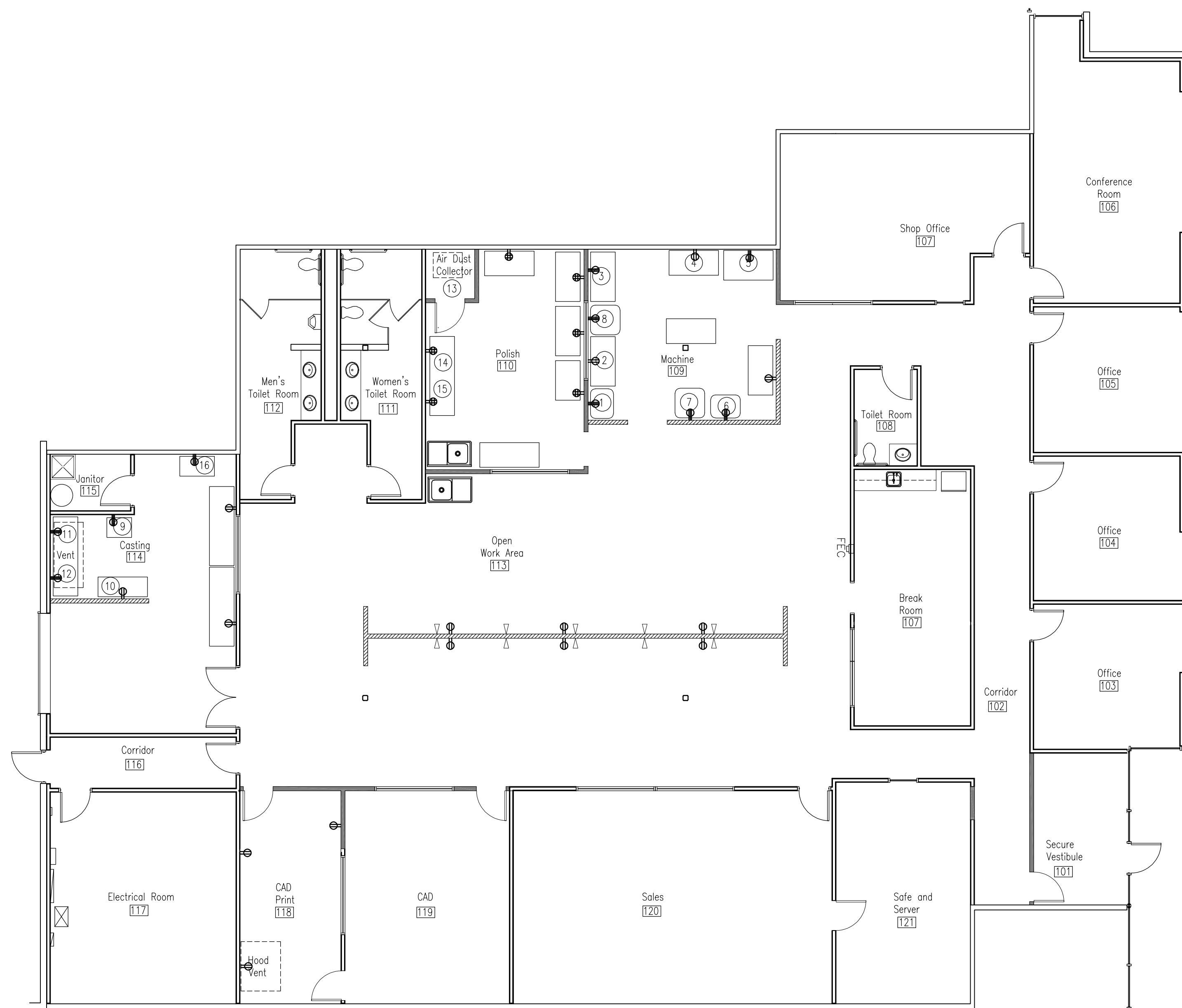
WESTGROVE DRIVE





Precision Set Fine Jewelry Works

16650 Westgrove Drive, Suite 400
 Addison, Texas 75001



LEGEND:

- ⦿ DATA (DOUBLE JACK)
- ⦿ UC UNDERCOUNTER MTD. DUPLEX OUTLET
- ⦿ DUPLEX OUTLET
- ⦿ QUAD OUTLET
- ⦿ TV MONITOR
- ⦿ 220V OUTLET
- ⦿ FLOOR BOX

GENERAL NOTES

1. COORDINATE WITH TENANT'S POWER / DATA / IT REQUIREMENTS
2. COORDINATE MOUNTING HEIGHT OF DEVICES FOR TENANT PROVIDED EQUIPMENT.
3. PROVIDE TREATED WOOD BLOCKING AT ALL WALL MOUNTED EQUIPMENT
4. REFER TO MEP FOR EQUIPMENT ROUGH IN

Machine	V	Ph	A
1 Hardinge HSL	208-220	3	1.9/95
2 Emco lathe	115		11.9max
3 Fly cutter	230	1	.9
4 Lincoln mill	110		11
5 Emco Mill	230	3	1.52/.35
6 Moyas Lathe	220/380	?	
7 Feeler	220	3	1.9/1.1
8 Shop Hardinge	208/230	3	1.9/1.7
9 Tanabe plt caster	200V +/- 10% 30, 50/60HZ		8KVA
	Step UP/DN transformer		
10 Memco caster	120/208-240		23
	Plug: NEMA 10-30P		
11 Paragon kiln	240	1	13
12 Vulcan kiln	220	1	20
13 Donaldson	230	3	?
	Provide wall electrical box/cutoff for the two motors in this unit		
14 Sm Branson-ultra	120		350W
Tub	120		8.5
15 Lg Branson -ultra	120	1	500W
Tub	200-240		8.5
16 Vane compressor	230	1	40a

• Jewelers hall wall - 3 ea dedicated 20 amp lines for lasers

REVISION NO: DATE:

Equipment Plan



LH2 PROJECT NO: 22-067
 ISSUED: Permit
 ISSUED DATE: 06.24.2022

LETTIE H. HARRELL
 LICENSE NO. 16897

DRAWING NUMBER:

A1.22