

# CY FAIR ANIMAL HOSPITAL

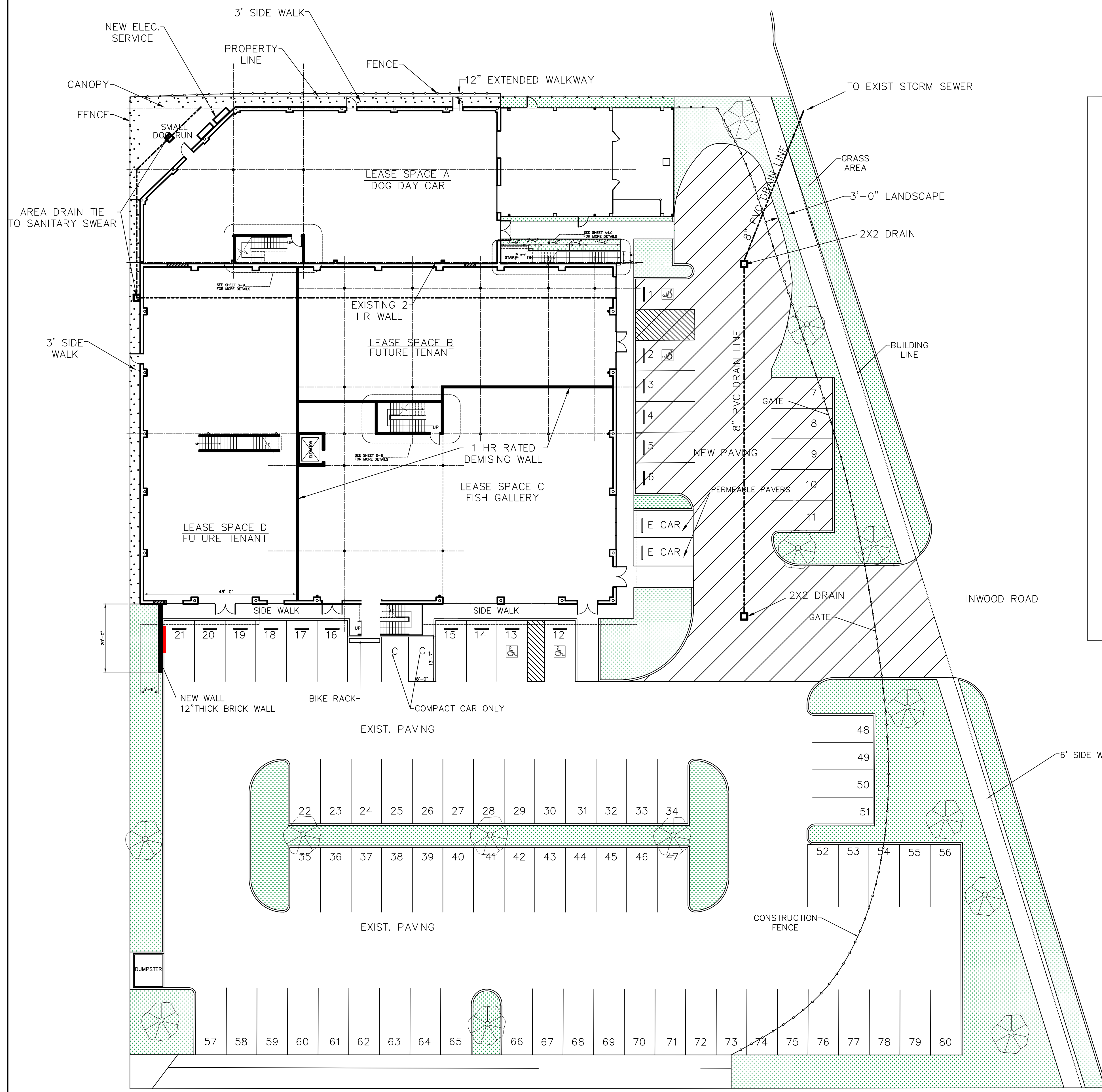
15003 INWOOD DR, ADDISON, TX 75001  
CHANNEL LETTERS



P:\-- NEW CLIENT FILES --\C\CYFAIR ANIMAL HOSPITAL



REVISIONS AND ISSUANCE		
NO.	DATE	DESCRIPTION



CURRENT ZONING: COMMERCIAL 1  
 PROPOSED SUP: DOG KENNEL (10,464 SQ FT)  
 PROPOSED USES: OFFICE/KENNEL/RETAIL  
 TOTAL LOT AREA: 65,583 SQ. FT (1.506 ACRES)  
 BUILDING AREA: 28,138 SQ FT  
 REQUIRED GREEN SPACE: 20%/13,117 S Q. FT.  
 GREEN SPACE PROVIDED: 20%/13,003 SQ. FT  
 HEIGHT: 27 FT., 2 STORY  
 LOT COVERAGE: 30%  
 SQ. FT. OF IMPERVIOUS SURFACE: 52,380 SQ. FT  
 TOTAL PARKING: 1/PER 200 RETAIL,  
 1 PER/300 OFFICE, 1 PER/1,000 WAREHOUSE (EST. 76 NEEDED) CURRENT NUMBER OF PARKING: 81

I.	RETAIL: 1/200 = 7216/200	=36 SPACES
II.	MEDICAL: 1/200 = 4200/200	=21 SPACES
II.	OFFICE: 1/300 = 600/300	=2 SPACES
IJ.	WAREHOUSE 1/1000 = 16122/1000	=17 SPACES
TOTAL = 28,138 SQ. FT		=76 CAR REQUIRED

a. SUITE A TOTAL = 10,464 SQ FT  
 KENNEL = 9,464 SQ FT =9.4 PARKING SPACE  
 RETAIL = 1000 SQ FT =5 PARKING SPACE

b. SUITE B TOTAL = 3,500 SQ FT  
 RETAIL = 2,000 SQ FT =10 PARKING SPACE  
 WAREHOUSE = 1,500 SQ FT =1.5 PARKING SPACE

c. SUITE C TOTAL = 7,376 SQ FT  
 RETAIL = 4,216 SQ FT =21.0 PARKING SPACE  
 OFFICE = 600 SQ FT =2 PARKING SPACE  
 WAREHOUSE = 2,560 SQ FT = 2.6 PARKING SPACE

d. SUITE D TOTAL = 6,798 SQ FT  
 WAREHOUSE = 2,598 SQ FT =2.6 PARKING SPACE  
 MEDICAL = 4,200 SQ FT = 21 PARKING SPACE

TOTAL PARKING = 76 PARKING SPACE

HANDICAP PARKING IS PROVIDED IN ACCORDANCE WITH ADA STANDARDS

**ADDISON PET YARD**  
 15003 INWOOD RD.  
 ADDISON, TEXAS 75001



DRAWING TITLE

SITE PLAN

DRAWN BY: NR CHECKED BY: JM

DATE: 06/22/20 JOB NO.:

DRAWING NO.:

**SITE PLAN**  
 SCALE: 1/16"=1'-0"

**A1.0**

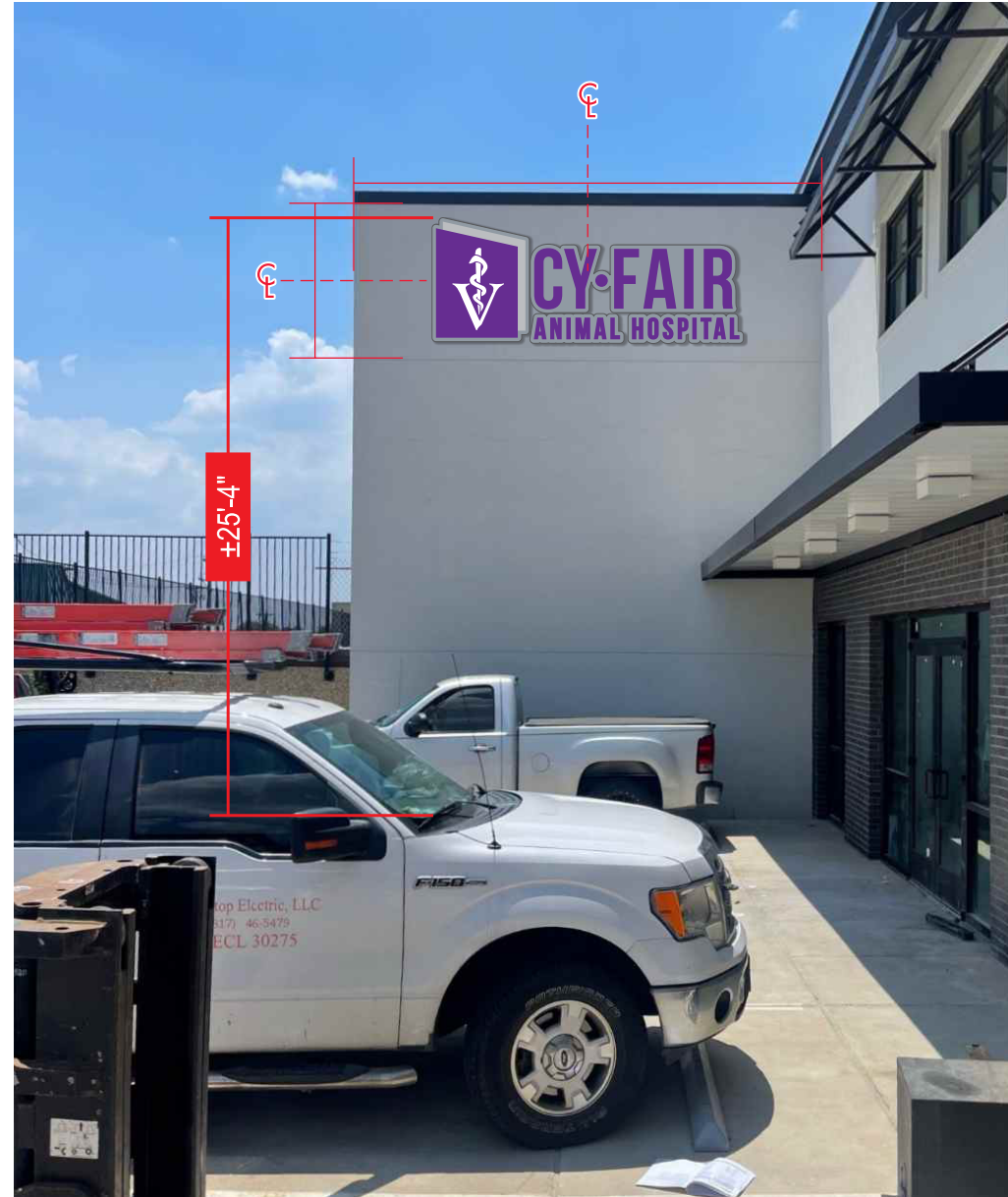
06/22/2020

SIGN TYPE A QTY: 1

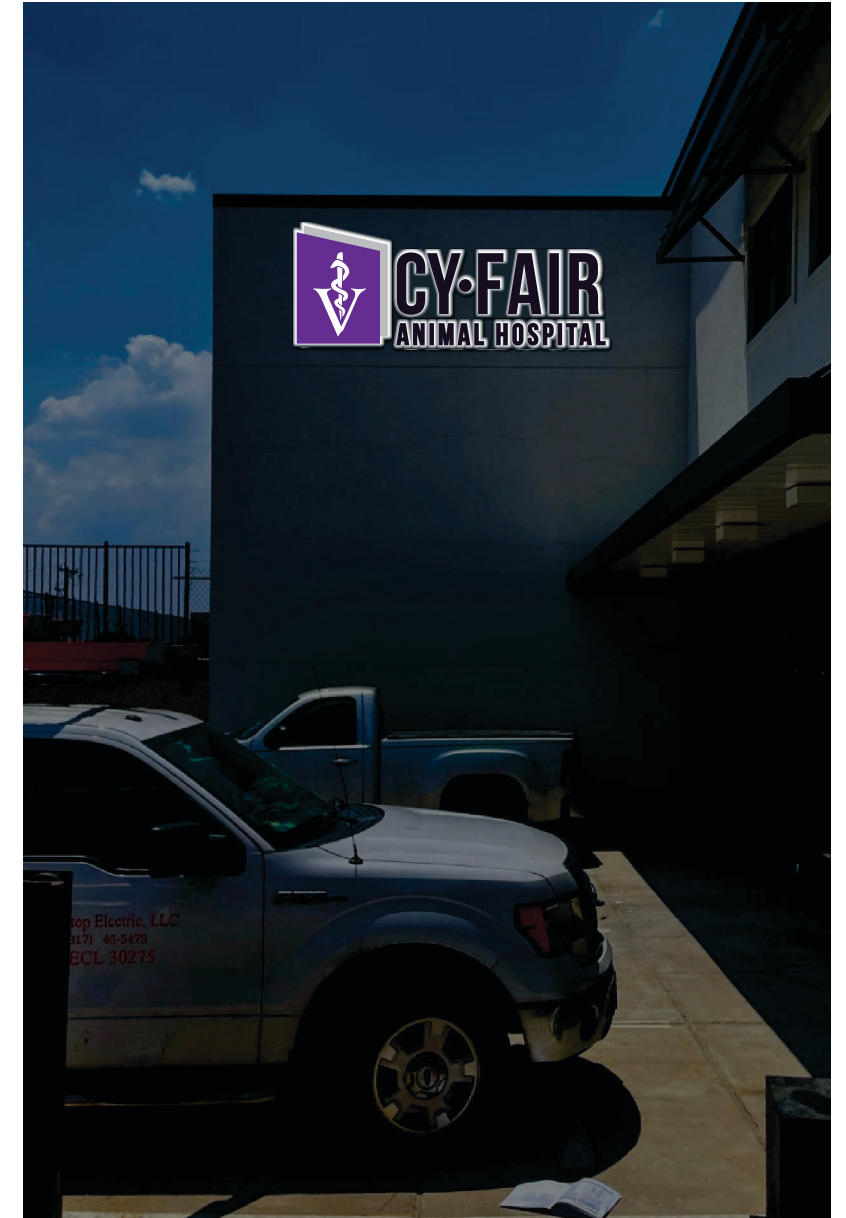
**SCOPE OF WORK:**  
 • FABRICATE & INSTALL (1) SET OF CHANNEL LETTERS ON RACEWAY



EXISTING CONDITIONS



UPDATED CONDITIONS



ILLUMINATED CONDITIONS

SIGN ELEVATION

SCALE: 1/8" = 1'-0"

PROJECT: CY FAIR ANIMAL HOSPITAL
LOCATION: 15003 INWOOD DRIVE
CITY/STATE: ADDISON, TX 75001
DATE: 7.1.22
SALES / PM: MARCO GODINEZ
DESIGNER: KEN PHU
DRAWING#: 7159

REVISIONS		

SIGNATURES	
CLIENT APPROVAL SIGNED: _____	DATE: _____
LANDLORD APPROVAL SIGNED: _____	DATE: _____
SALES APPROVAL SIGNED: _____	DATE: _____

**COPYRIGHT**  
 THIS RENDERING IS THE PROPERTY OF NATIONAL SIGNS, LLC. ANY REPRODUCTION OR EXHIBITION OF THIS DRAWING IS STRICTLY PROHIBITED. ©2019 NATIONAL SIGNS, LLC. THIS RENDERING MAY NOT BE USED TO CONSTRUCT AND/OR BUILD WHAT IS DEPICTED HEREIN WITHOUT THE EXPRESS WRITTEN CONSENT OF NATIONAL SIGNS, LLC.

**UL INSTALLATION REQUIREMENTS**  
 THIS SIGN IS INTENDED TO BE INSTALLED IN ACCORDANCE WITH THE REQUIREMENTS OF ARTICLE 600 OF THE NATIONAL ELECTRICAL CODE AND/OR OTHER APPLICABLE LOCAL CODES. THIS INCLUDES PROPER GROUNDING AND BONDING OF THE SIGN.

**120 VOLT ELECTRICAL SERVICE**

ELECTRICAL LOAD:	SIGN	LED DISPLAY
20 AMP CIRCUIT(S):		

PROVIDE PRIMARY ELECTRICAL WITHIN 6' OF STREET END OF SIGN  
 PROVIDE PRIMARY ELECTRICAL AT CENTER OF SIGN  
 CLIENT TO PROVIDE ALL PRIMARY ELECTRICAL SERVICES TO THE SIGN UNLESS OTHERWISE SPECIFIED

SIGN TYPE A QTY: 1

**SCOPE OF WORK:**  
 • FABRICATE & INSTALL (1) SET OF CHANNEL LETTERS ON RACEWAY

**CHANNEL LETTERS (REV ILLUMINATED):**  
 • FACES: .125" ALUMINUM, FINISHED P1  
 • RETURNS: .063" ALUM., 4" DEEP, FINISH P1  
 • BACKS: .150" WHITE POLYCARBONATE  
 • ILLUMINATION: WHITE LEDs  
 • POWER SUPPLIES: HOUSED INSIDE RACEWAYS  
 • SILHOUETTE PANEL: .125" ALUMINUM, FINISH P3  
 • RACEWAY: 3" DEEP X 5" HIGH, FINISHED P3; MOUNT FLUSH TO WALL USING MIN. 3/8" X 5" FASTENERS

**CHANNEL LOGO (DUAL ILLUMINATED):**  
 • FACES: 3/16" WHITE ACRYLIC w/ V1, V2 VINYL APPLIED  
 • TRIMCAP: 1" JEWELITE, FINISH P1, P2  
 • RETURNS: .063" ALUM, 4" DEEP; FINISH P1, P2  
 • BACKS: .150" CLEAR POLYCARBONATE  
 • ILLUMINATION: WHITE LEDs  
 • POWER SUPPLIES: HOUSED INSIDE RACEWAYS  
 • SILHOUETTE PANEL: .125" ALUMINUM, FINISH P3  
 • RACEWAY: 3" DEEP X 5" HIGH, FINISHED P3; MOUNT FLUSH TO WALL USING MIN. 3/8" X 5" FASTENERS

**FINISH SCHEDULE**

**PAINT COLORS**

- P1: MP 22336
- P2: MP 08361
- P3: PTM FASCIA - TBD

**VINYL COLORS**

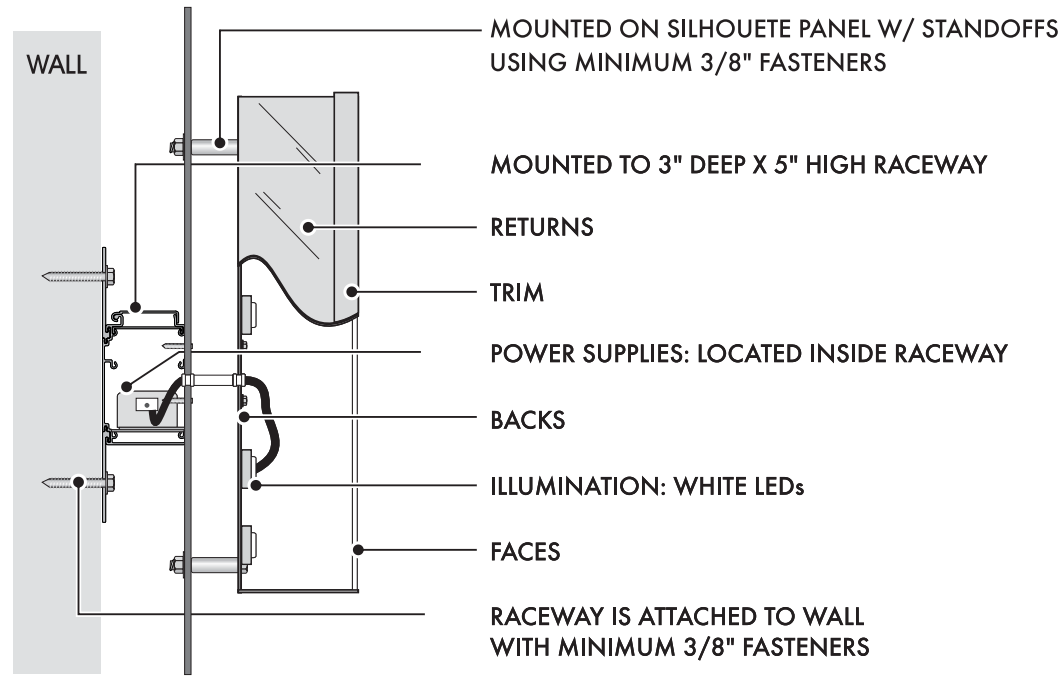
- V1: TRANSLUCENT PURPLE 2500-2856
- V2: TRANSLUCENT SILVER GREY 2500-51

APPROVED BY: \_\_\_\_\_



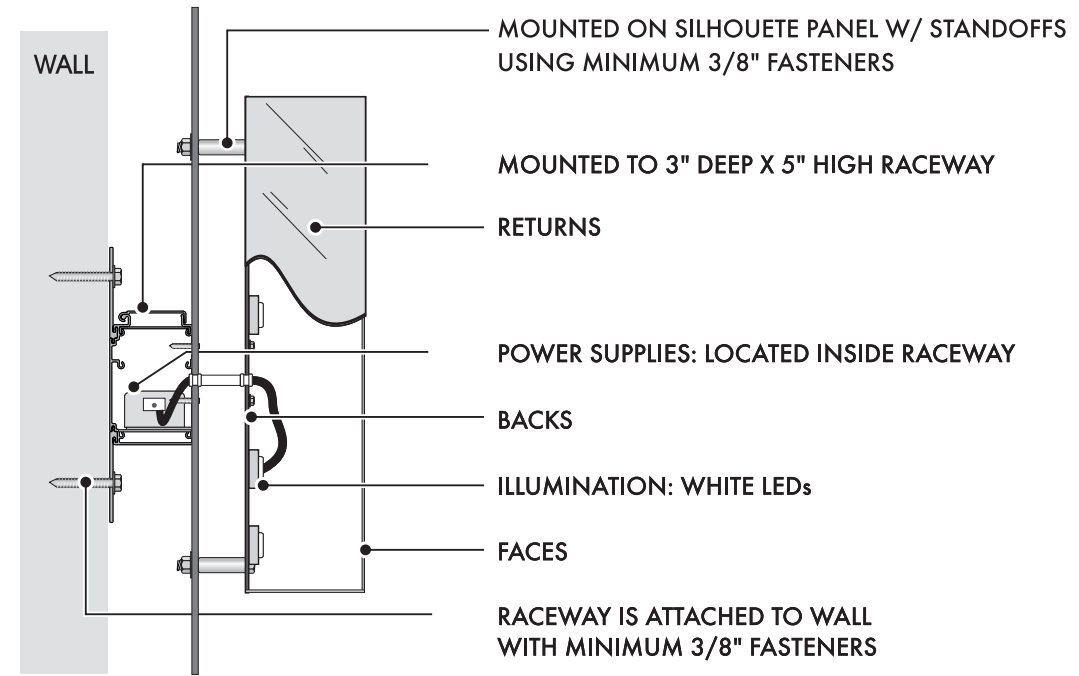
SIGN LAYOUT

SCALE: 1/2" = 1'-0"



TYPICAL - SECTION DETAIL - DUAL ILLUMINATED

SCALE: NTS



TYPICAL - SECTION DETAIL - REVERSES ILLUMINATED

SCALE: NTS

PROJECT: CY FAIR ANIMAL HOSPITAL  
 LOCATION: 15003 INWOOD DRIVE  
 CITY/STATE: ADDISON, TX 75001  
 DATE: 7.1.22  
 SALES / PM: MARCO GODINEZ  
 DESIGNER: KEN PHU  
 DRAWING#: 7159

REVISIONS		

SIGNATURES	
CLIENT APPROVAL SIGNED: _____	DATE: _____
LANDLORD APPROVAL SIGNED: _____	DATE: _____
SALES APPROVAL SIGNED: _____	DATE: _____

**COPYRIGHT**  
 THIS RENDERING IS THE PROPERTY OF NATIONAL SIGNS, LLC. ANY REPRODUCTION OR EXHIBITION OF THIS DRAWING IS STRICTLY PROHIBITED. ©2019 NATIONAL SIGNS, LLC. THIS RENDERING MAY NOT BE USED TO CONSTRUCT AND/OR BUILD WHAT IS DEPICTED HEREIN WITHOUT THE EXPRESS WRITTEN CONSENT OF NATIONAL SIGNS, LLC.

**UL INSTALLATION REQUIREMENTS**  
 THIS SIGN IS INTENDED TO BE INSTALLED IN ACCORDANCE WITH THE REQUIREMENTS OF ARTICLE 600 OF THE NATIONAL ELECTRICAL CODE AND/OR OTHER APPLICABLE LOCAL CODES. THIS INCLUDES PROPER GROUNDING AND BONDING OF THE SIGN.

**120 VOLT ELECTRICAL SERVICE**

SIGN	LED DISPLAY
ELECTRICAL LOAD: _____	_____
20 AMP CIRCUIT(S): _____	_____

PROVIDE PRIMARY ELECTRICAL WITHIN 6' OF STREET END OF SIGN  
 PROVIDE PRIMARY ELECTRICAL AT CENTER OF SIGN  
 CLIENT TO PROVIDE ALL PRIMARY ELECTRICAL SERVICES TO THE SIGN UNLESS OTHERWISE SPECIFIED