

SITE PLAN: N.T.S.

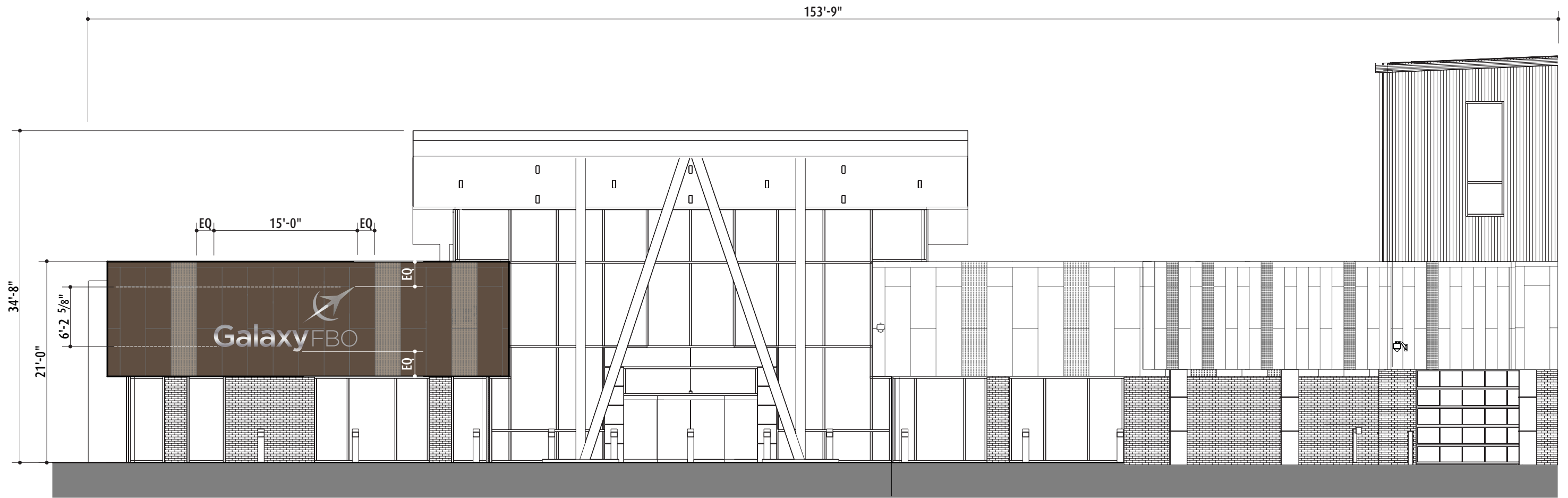


8181 Jetstar Drive
Suite 110
Irving, TX 75063
972-915-3800
www.asisignage.com

Project: Galaxy FBO		Revisions		Initials	Date	<ul style="list-style-type: none"> 📁 New Project Files ↳ Projects 2014 to Current ↳ G ↳ Galaxy FBO Addison ↳ Galaxy FBO Addison/Shop Drawings ↳ Galaxy FBO Addison Exterior.pdf
Location: Addison, TX						
Date: 05-05-2021	Version: 1					
Scale: as noted	Artist: G. Owens					

SP

Sheet 1 of 1



EAST ELEVATION: Scale: 3/32" = 1'-0"



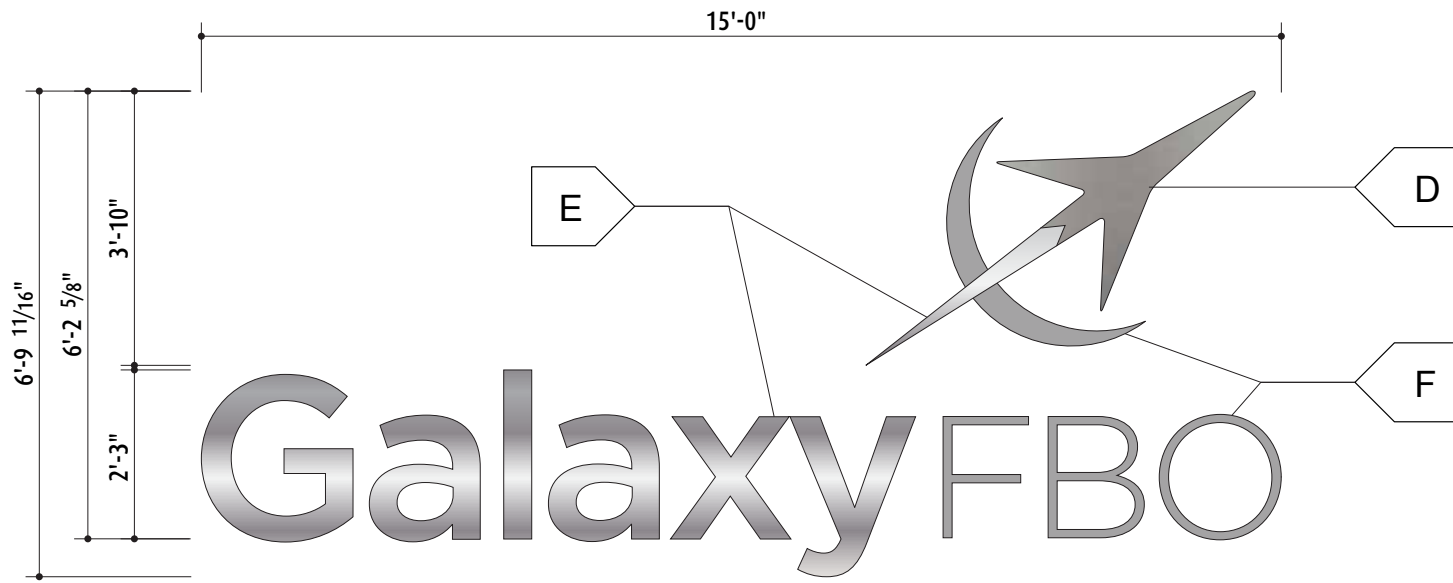
8181 Jetstar Drive
Suite 110
Irving, TX 75063
972-915-3800
www.asisignage.com

Project: Galaxy FBO		Revisions		Initials	Date
Location: Addison, TX					
Date: 05-05-2021	Version: 1				
Scale: as noted	Artist: G. Owens				

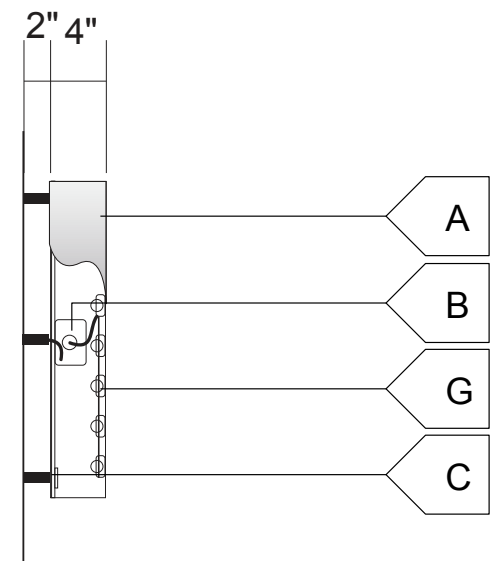
New Project Files

- Projects 2014 to Current
 - ↳ G Galaxy FBO Addison
 - ↳ Galaxy FBO Addison/Shop Drawings
 - ↳ Galaxy FBO Addison Exterior.pdf

PBI



SIGN EFFECTIVE AREA 102.11 SF



SECTION: N.T.S.

- Notes
- A / 4" deep fabricated aluminum reverse channel letters - halo illuminated with lexan backs
 - B / Self-contained transformers as required
 - C / Penetrations to the building to be sealed with epoxy grout. Stand offs paint black
 - D / #4 brushed stainless steel "Jet" artwork, faces and returns
 - E / Mirror polished stainless steel "Galaxy" and "flame" artwork, faces and returns
 - F / Non-directional stainless steel "boom" and "FBO" artwork, faces and returns
 - G / Lighting to be provided by a G.E. Tetra® MAX LED Lighting System for channel letters (or similar approved system), with sufficient LED fixtures to provide bright, even illumination of letter faces. Electrical connections of letterforms to power supply to be through backs of letters and concealed in conduit painted to match Spraylat B70-400 Starbright White. The Signage Contractor is to provide appropriate conduit and insulators for all penetrations. Estimated Power Supply Requirements: One (1) 20 AMP, 120v breaker, with dedicated lines incorporated into building's EMS. The Signage Contractor to provide all required remote transformers and electrical connections and to coordinate primary electrical to each location with the General Contractor.

NOTE: Fabricator to provide mounting hardware as required to meet local code

PBI

ELEVATION: Scale: 3/8" = 1'-0"

8181 Jetstar Drive
Suite 110
Irving, TX 75063
972-915-3800
www.asisignage.com

Project: Galaxy FBO		Revisions		Initials	Date
Location: Addison, TX					
Date: 05-05-2021	Version: 1				
Scale: as noted	Artist: G. Owens				

New Project Files

- Projects 2014 to Current
 - G
 - Galaxy FBO Addison
 - Galaxy FBO Addison/Shop Drawings
 - PBI_11.24.21.ai

Sheet 3 of 3
Pg. 3