

# Public Input For Addison Athletic Club Renovations



# AAC Renovations



**Addison Athletic Club (AAC) is in the design phase for renovations approved by voters in the 2019 Bond Election. Those renovations include:**

- Locker Room Renovations
- Gymnasium and Track Improvements
- Pool Modernization
- Roof Replacement
- HVAC Replacement

**Also included in the design will be core building improvements which are not funded at this time but include:**

- Reconfiguring the Lobby Desk for Improved Efficiency
- New Flooring (excluding wood and gym floors)
- Painting Walls
- Replacing Lights with LED lights
- Updating Furniture
- Updating Signage

# AAC Renovations



- The proposed renovations were identified as priorities in the Addison Athletic Club Master Plan and / or in the Asset Management Plan.
- On June 9, 2020 Council awarded a contract to LPA Architects for the design of the renovations. A portion of that contract includes gathering input in order to determine community preferences.
- To gather feedback a survey was made available to residents on September 22 and closed October 13, 2020.



# Community Input - Questions

## Athletic Club Renovation Survey

This page shows analysis of submitted data, such as the number of submissions per component value, calculations, and averages. Additional components may be added under the "Add analysis components" fieldset.

### Are you a member of the Addison Athletic Club?

Yes	444
No	1
I plan to be in the future	4

### Which design do you prefer?

- I prefer the Traditional Design.

---

- I prefer the Transitional Design.

---

- I have a neutral opinion.

---

- I do not like either design Option.

---

### Which Changing Room do you prefer?

- I prefer Option A.

---

- I prefer Option B.

---

- I prefer Option C.

---

- I have a neutral opinion.

---

- I do not like any of the layout options.

---

### Please indicate your sauna preference.

- I prefer a traditional sauna over an infrared sauna.

---

- I prefer an infrared sauna over a traditional sauna.

---

- I am neutral on this option.

---

- I do not prefer either be included in the locker rooms.

---

### Utilizing the information provided about steam showers please indicate your preference.

- I prefer a traditional steam room over a steam shower.

---

- I prefer a steam shower over a traditional steam room.

---

- I am neutral on this option.

---

- I do not prefer either be included in the locker rooms.

---

**449 Responses**

# Community Input – Design Style



## Traditional Style

**ADDISON**  
**ATHLETIC CLUB**  
ADDISON, TEXAS

**RECEPTION**

**LOCKER ROOM**

**INDOOR TRACK**

**PROPOSED FINISHES**

**EXTERIOR POOL SHADE STRUCTURE**

**PROPOSED FINISHES**

**PUBLIC INPUT**  
OPTION A  
TRADITIONAL DESIGN

**LPA**

RECEPTION: 1. WALL: 208, 209, 210, 211, 212, 213, 214, 215, 216, 217, 218, 219, 220, 221, 222, 223, 224, 225, 226, 227, 228, 229, 230, 231, 232, 233, 234, 235, 236, 237, 238, 239, 240, 241, 242, 243, 244, 245, 246, 247, 248, 249, 250, 251, 252, 253, 254, 255, 256, 257, 258, 259, 260, 261, 262, 263, 264, 265, 266, 267, 268, 269, 270, 271, 272, 273, 274, 275, 276, 277, 278, 279, 280, 281, 282, 283, 284, 285, 286, 287, 288, 289, 290, 291, 292, 293, 294, 295, 296, 297, 298, 299, 300, 301, 302, 303, 304, 305, 306, 307, 308, 309, 310, 311, 312, 313, 314, 315, 316, 317, 318, 319, 320, 321, 322, 323, 324, 325, 326, 327, 328, 329, 330, 331, 332, 333, 334, 335, 336, 337, 338, 339, 340, 341, 342, 343, 344, 345, 346, 347, 348, 349, 350, 351, 352, 353, 354, 355, 356, 357, 358, 359, 360, 361, 362, 363, 364, 365, 366, 367, 368, 369, 370, 371, 372, 373, 374, 375, 376, 377, 378, 379, 380, 381, 382, 383, 384, 385, 386, 387, 388, 389, 390, 391, 392, 393, 394, 395, 396, 397, 398, 399, 400, 401, 402, 403, 404, 405, 406, 407, 408, 409, 410, 411, 412, 413, 414, 415, 416, 417, 418, 419, 420, 421, 422, 423, 424, 425, 426, 427, 428, 429, 430, 431, 432, 433, 434, 435, 436, 437, 438, 439, 440, 441, 442, 443, 444, 445, 446, 447, 448, 449, 450, 451, 452, 453, 454, 455, 456, 457, 458, 459, 460, 461, 462, 463, 464, 465, 466, 467, 468, 469, 470, 471, 472, 473, 474, 475, 476, 477, 478, 479, 480, 481, 482, 483, 484, 485, 486, 487, 488, 489, 490, 491, 492, 493, 494, 495, 496, 497, 498, 499, 500, 501, 502, 503, 504, 505, 506, 507, 508, 509, 510, 511, 512, 513, 514, 515, 516, 517, 518, 519, 520, 521, 522, 523, 524, 525, 526, 527, 528, 529, 530, 531, 532, 533, 534, 535, 536, 537, 538, 539, 540, 541, 542, 543, 544, 545, 546, 547, 548, 549, 550, 551, 552, 553, 554, 555, 556, 557, 558, 559, 560, 561, 562, 563, 564, 565, 566, 567, 568, 569, 570, 571, 572, 573, 574, 575, 576, 577, 578, 579, 580, 581, 582, 583, 584, 585, 586, 587, 588, 589, 590, 591, 592, 593, 594, 595, 596, 597, 598, 599, 600, 601, 602, 603, 604, 605, 606, 607, 608, 609, 610, 611, 612, 613, 614, 615, 616, 617, 618, 619, 620, 621, 622, 623, 624, 625, 626, 627, 628, 629, 630, 631, 632, 633, 634, 635, 636, 637, 638, 639, 640, 641, 642, 643, 644, 645, 646, 647, 648, 649, 650, 651, 652, 653, 654, 655, 656, 657, 658, 659, 660, 661, 662, 663, 664, 665, 666, 667, 668, 669, 670, 671, 672, 673, 674, 675, 676, 677, 678, 679, 680, 681, 682, 683, 684, 685, 686, 687, 688, 689, 690, 691, 692, 693, 694, 695, 696, 697, 698, 699, 700, 701, 702, 703, 704, 705, 706, 707, 708, 709, 710, 711, 712, 713, 714, 715, 716, 717, 718, 719, 720, 721, 722, 723, 724, 725, 726, 727, 728, 729, 730, 731, 732, 733, 734, 735, 736, 737, 738, 739, 740, 741, 742, 743, 744, 745, 746, 747, 748, 749, 750, 751, 752, 753, 754, 755, 756, 757, 758, 759, 760, 761, 762, 763, 764, 765, 766, 767, 768, 769, 770, 771, 772, 773, 774, 775, 776, 777, 778, 779, 780, 781, 782, 783, 784, 785, 786, 787, 788, 789, 790, 791, 792, 793, 794, 795, 796, 797, 798, 799, 800, 801, 802, 803, 804, 805, 806, 807, 808, 809, 810, 811, 812, 813, 814, 815, 816, 817, 818, 819, 820, 821, 822, 823, 824, 825, 826, 827, 828, 829, 830, 831, 832, 833, 834, 835, 836, 837, 838, 839, 840, 841, 842, 843, 844, 845, 846, 847, 848, 849, 850, 851, 852, 853, 854, 855, 856, 857, 858, 859, 860, 861, 862, 863, 864, 865, 866, 867, 868, 869, 870, 871, 872, 873, 874, 875, 876, 877, 878, 879, 880, 881, 882, 883, 884, 885, 886, 887, 888, 889, 890, 891, 892, 893, 894, 895, 896, 897, 898, 899, 900, 901, 902, 903, 904, 905, 906, 907, 908, 909, 910, 911, 912, 913, 914, 915, 916, 917, 918, 919, 920, 921, 922, 923, 924, 925, 926, 927, 928, 929, 930, 931, 932, 933, 934, 935, 936, 937, 938, 939, 940, 941, 942, 943, 944, 945, 946, 947, 948, 949, 950, 951, 952, 953, 954, 955, 956, 957, 958, 959, 960, 961, 962, 963, 964, 965, 966, 967, 968, 969, 970, 971, 972, 973, 974, 975, 976, 977, 978, 979, 980, 981, 982, 983, 984, 985, 986, 987, 988, 989, 990, 991, 992, 993, 994, 995, 996, 997, 998, 999, 1000

# Community Input – Design Style



## Transitional Style

**ADDISON**

**ATHLETIC CLUB**  
ADDISON, TEXAS

**PUBLIC INPUT**  
OPTION B  
TRANSITIONAL DESIGN

**LPA**

**RECEPTION**

**PROPOSED FINISHES**

**LOCKER ROOM**

**PROPOSED FINISHES**

**INDOOR TRACK**

**PROPOSED FINISHES**

**EXTERIOR POOL SHADE STRUCTURE**

**PROPOSED FINISHES**



# Community Input – Design Style

## Which design style do you prefer?

I prefer the Traditional Design.	207	46.1%
I prefer the Transitional Design.	207	46.1%
I have a neutral opinion.	33	7.3%
I do not like either design Option.	2	.5%

449 Responses

### Staff Recommendation

Proceed with the Traditional Design blending in preferred transitional elements identified in the comments; Lighting up the design and using small accents of color.

## Are there items you feel strongly about or against?

### Traditional Design Likes

- Timeless and Classic\*
- Warm and Inviting
- Better fit for the AAC

### Traditional Design Dislikes

- Too dark\*
- Outdated Looking

### Transitional Design Likes

- Lighter, Brighter, Cleaner\*
- Use of Color\*
- Open and Inviting
- Fits Addison’s Brand

### Transitional Design Dislikes

- Could Become Dated
- Cold and Sterile Feeling

\* Designates most consistent comments

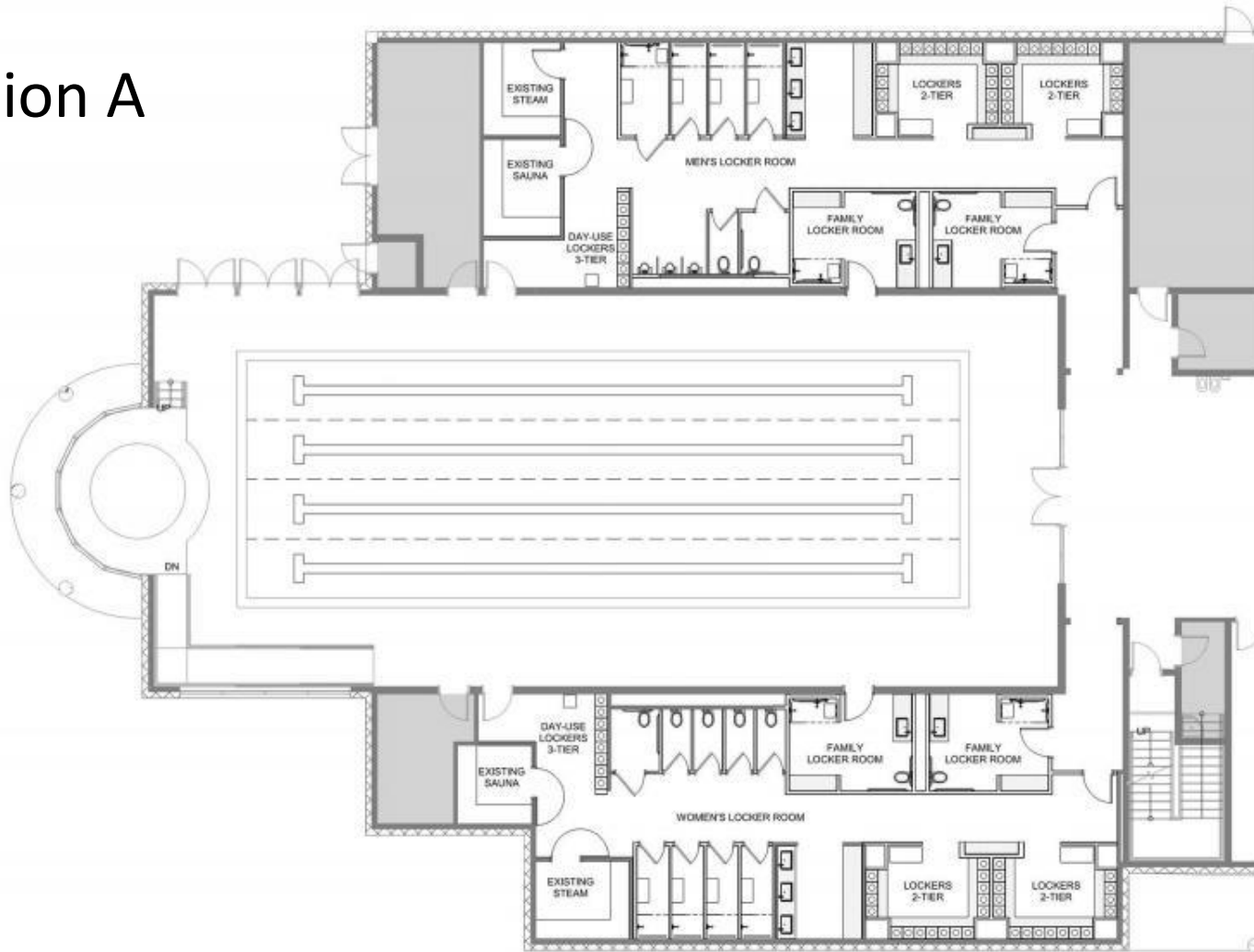
## Overarching Themes

- Timeless
- Bright and Open
- Should Fit Existing AAC Exterior and Interior.
- Like the Traditional Design with Use of More Color in Transitional Design\*
- Materials Should be Low Maintenance, Functional and Durable



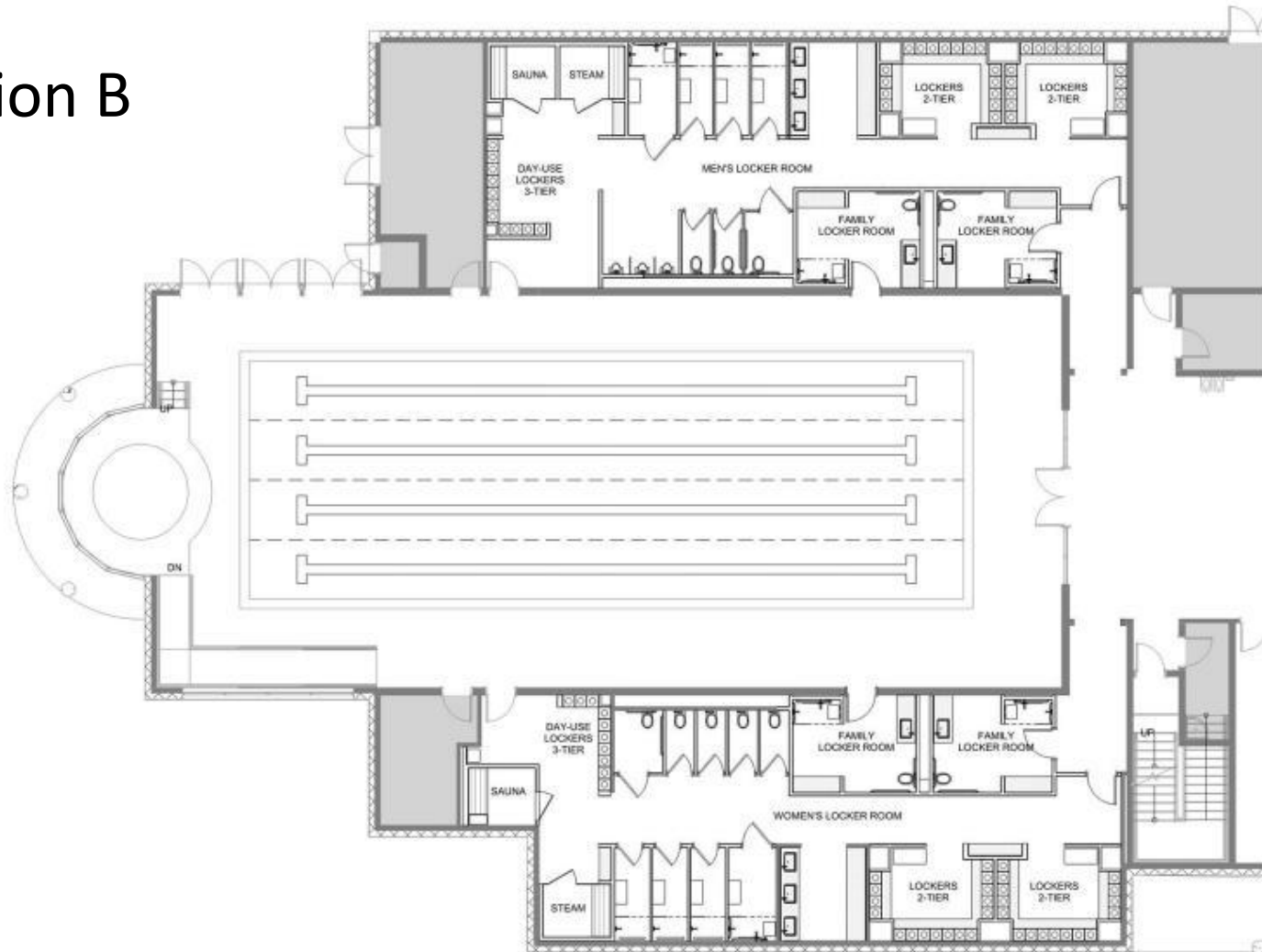
# Community Input – Changing Rooms

## Option A



# Community Input – Changing Rooms

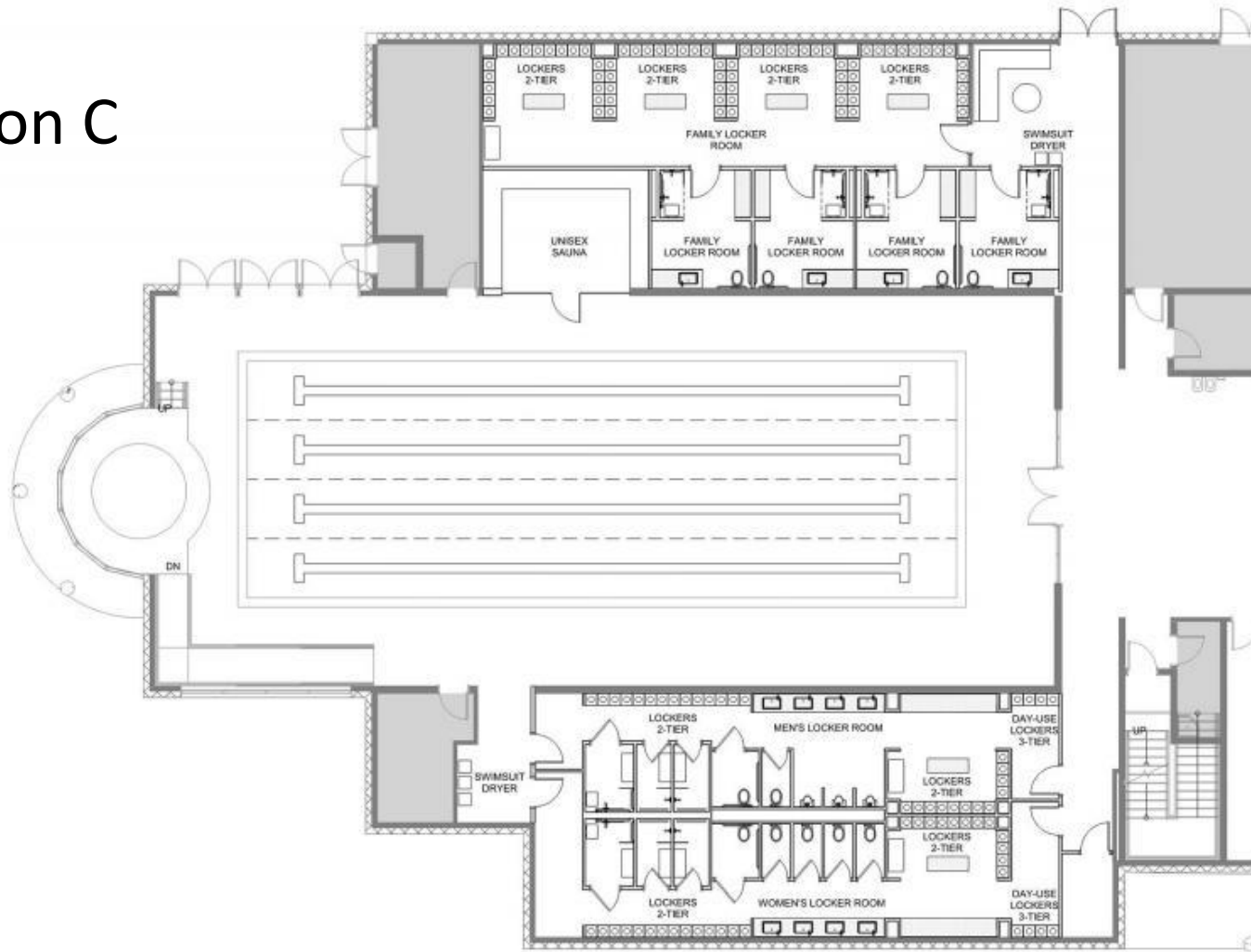
## Option B



# Community Input – Changing Rooms



## Option C





# Community Input – Changing Rooms

## Which changing room do you prefer?

I prefer Option A.	201	45%
I prefer Option B.	121	27%
I prefer Option C.	42	9%
I have a neutral opinion.	70	16%
I do not like any of the layout options.	15	3%

449 Responses

## Staff Recommendation

Proceed with Layout Option A – Look at ways to add a door from the Men’s room to the outdoor pool, add swimsuit dryers to both locker rooms and increase privacy.

## Are there items you feel strongly about or against?

### Locker Room Design Dislikes

- Size Reduction
- Unisex Sauna
- Stalls Across From Showers
- Small Lockers
- Stall Size

### Family Changing Comments

- Are Four Needed?
- Relocate to Outdoor Pool

### Locker Room Design Likes

- Swimsuit Dryer
- Outside Door on Men’s Side

## Overarching Themes

- Privacy and Safety Are Important
- Design for Durability and Cleanliness

# Community Input- Sauna



Traditional Sauna



Infrared Sauna

449 Responses

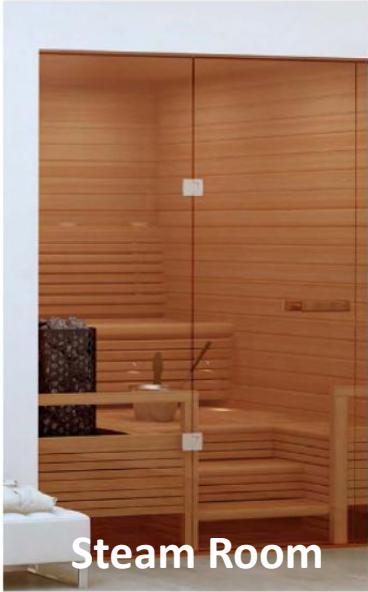
## Staff Recommendation

Proceed with Traditional Sauna.

### Indicate your sauna preference

I prefer a traditional sauna over an infrared sauna.	193	43%
I prefer an infrared sauna over a traditional sauna.	127	28.3%
I am neutral on this option.	109	24.3%
I do not prefer either be included in the locker rooms.	20	4.4%

# Community Input- Steam



Steam Room



Steam Shower

449 Responses

**Staff Recommendation**  
Proceed with Traditional Steam Room.

## Indicate your Steam preference

I prefer a traditional steam room over a steam shower.	218	49%
I prefer a steam shower over a traditional steam room.	74	16%
I am neutral on this option.	130	29%
I do not prefer either be included in the locker rooms.	27	6%

# Questions

