

Addison Airport Customs and Border Protection Facility Change Order No. 3

Staff Presentation

October 13, 2020



ADDISON

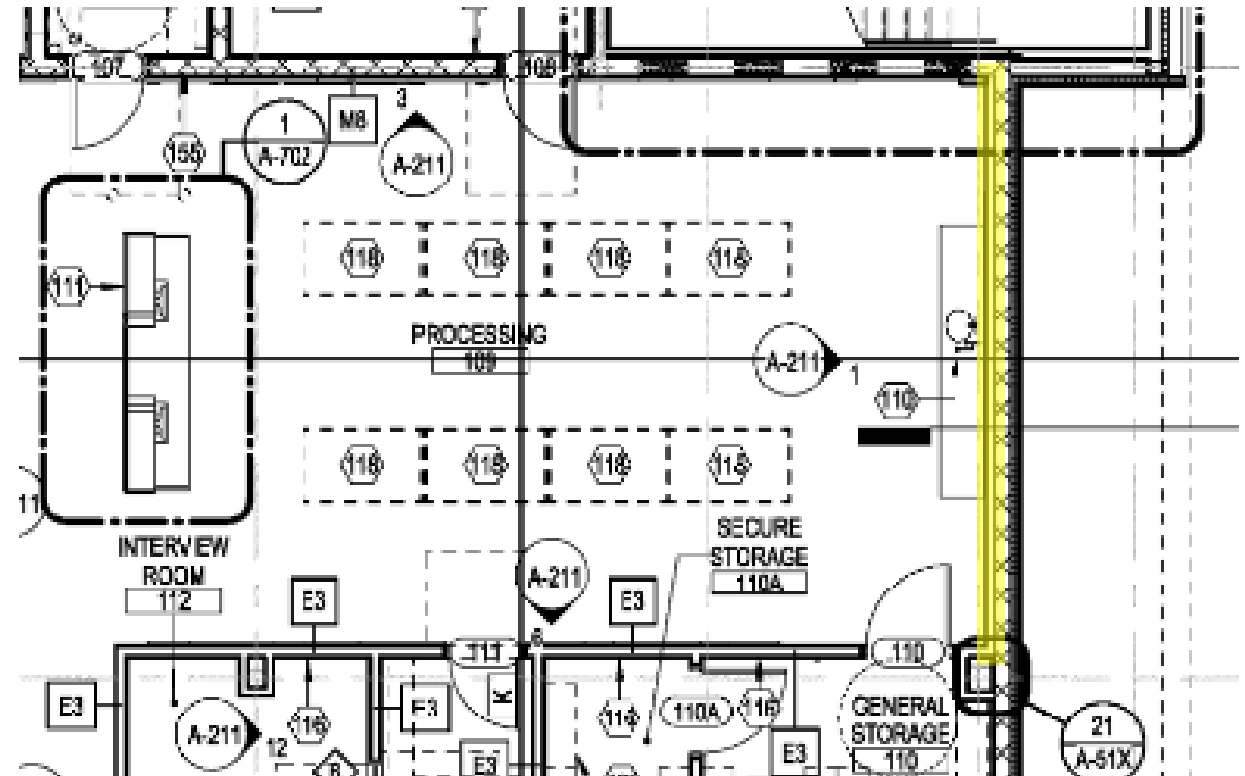
Change Order No. 3 Overview

Item Number/Description	Amount	Additional Calendar Days
Dry Wall Adjustment for Plumbing	\$2,943.10	5
Landscaping and Irrigation Changes	\$2,723.21	0
Equipment Delays Due to ASI 02	\$7,183.18	10
Scuppers and Downspouts (CCD-001)	\$3,478.06	12
Drywall Support Labor (CCD-002)	\$1,078.23	0
Door Hardware and Mullion Finishes Color Change (CCD-003)	\$2,677.03	0
Northwest Security Camera Pole Removal from Project Scope	(\$1,612.00)	0
Additional Hardware for Door (CCD-004)	\$886.60	0
Locker Credit	(\$2,100.00)	0
Subtotal	\$17,275.41	23

Dry Wall Adjustment for Plumbing

Item Number/Description	Amount	Additional Calendar Days
Dry Wall Adjustment for Plumbing	\$2,943.10	5

- First floor 'Processing 109' room
 - Drywall installed does not conceal plumbing pipes of the sink.
 - The contractor was directed to change the interior cladding layer to an F3 furring wall which has a 3-5/8" stud attached to the block wall with a layer of 5/8" thick drywall cladding.



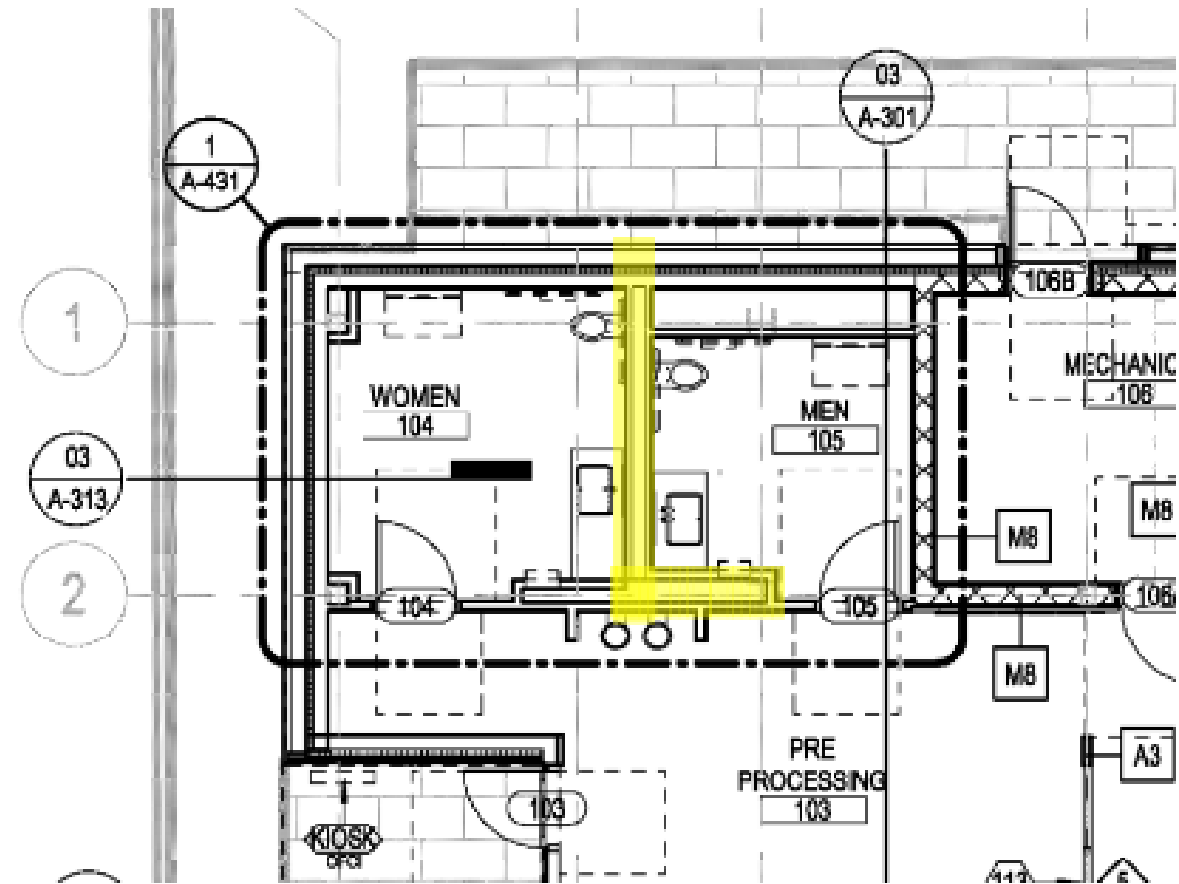
Dry Wall Adjustment for Plumbing



First floor processing area (September 25, 2020).

Dry Wall Adjustment for Plumbing

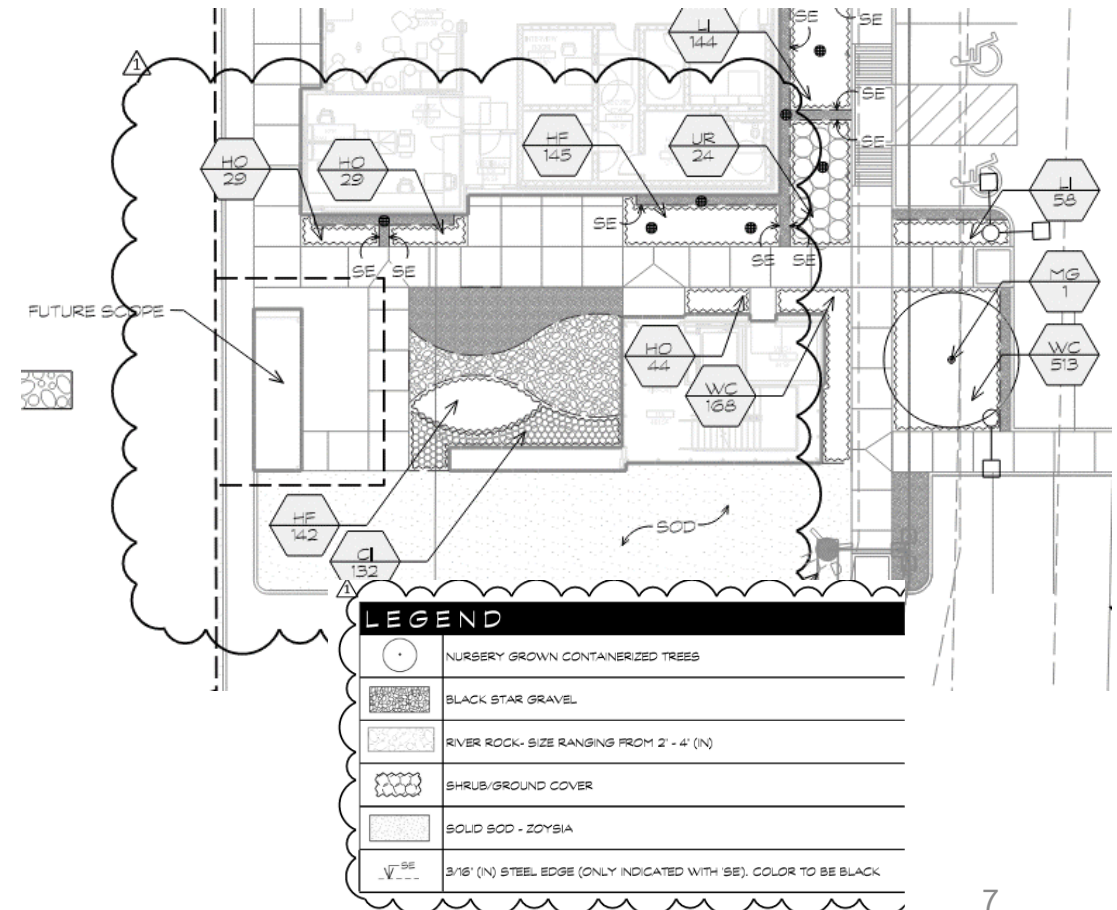
- First floor wet wall plumbing chase between 'Women 104' and 'Men 105'
 - Plumbing chase depth was too narrow to accommodate the back to back toilet carriers and any plumbing crossovers
- The contractor was directed to expand the width of this chase and modify its extents to provide adequate covering of toilet plumbing.



Landscaping and Irrigation Changes

Item Number/Description	Amount	Additional Calendar Days
Landscaping and Irrigation Changes	\$2,723.21	0

- Revisions were made to the landscape plans and planting designs to include more shade tolerant plants and a more suitable aggregate design for under the buildings shaded breezeway.
- Irrigation designs were updated to match the revisions to the plantings and aggregate design changes.
- The revised plants and aggregate designs were reviewed on-site with the Town Arborist to ensure these changes are in compliance with the Town of Addison standards.



Landscaping and Irrigation Changes

ADDISON



The breezeway area where landscaping changes will be made (September 25, 2020).

Equipment Delays Due to ASI 02

Item Number/Description	Amount	Additional Calendar Days
Equipment Delays Due to ASI 02	\$7,183.18	10

- Result of equipment rental extensions that were needed to keep required equipment on-site beyond the initial rental duration.
- The revisions (ASI 02) were issued formally on November 14th, 2019 and were related to adjustments to the perimeter slab edges in the structural drawings

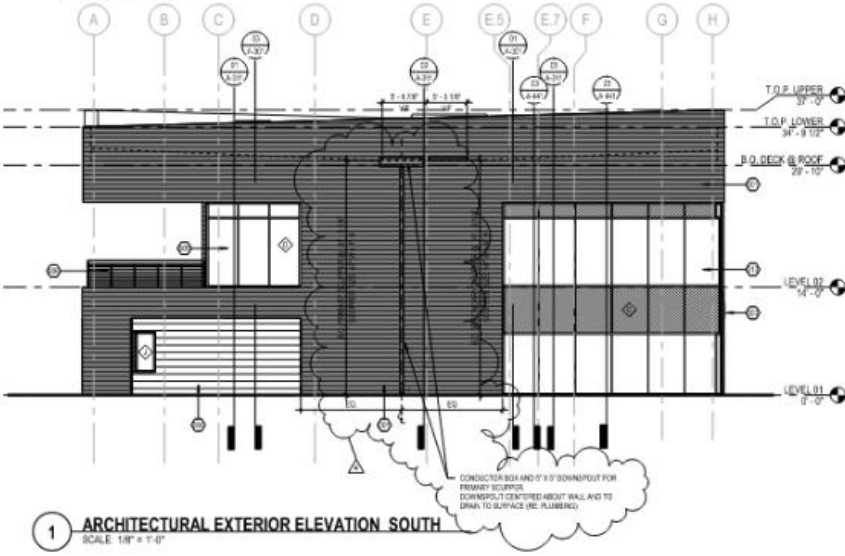
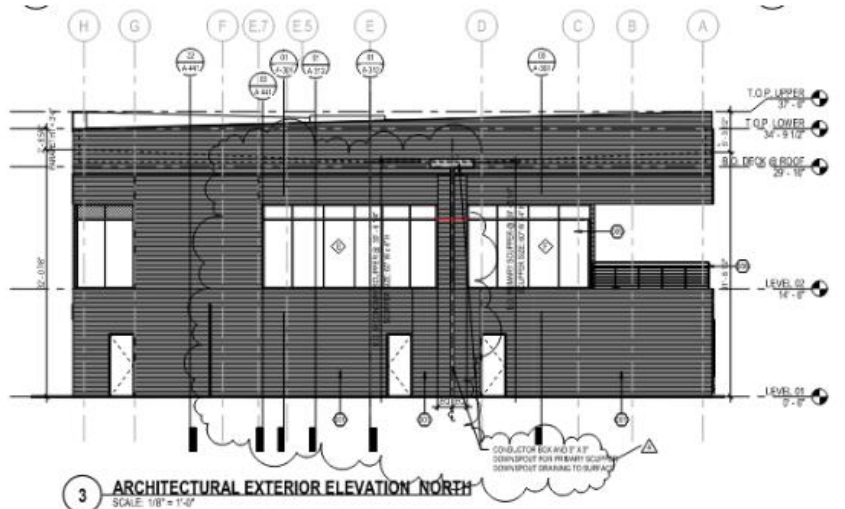
Scuppers and Downspouts

Item Number/Description	Amount	Additional Calendar Days
Scuppers and Downspouts (CCD-001)	\$3,478.06	12

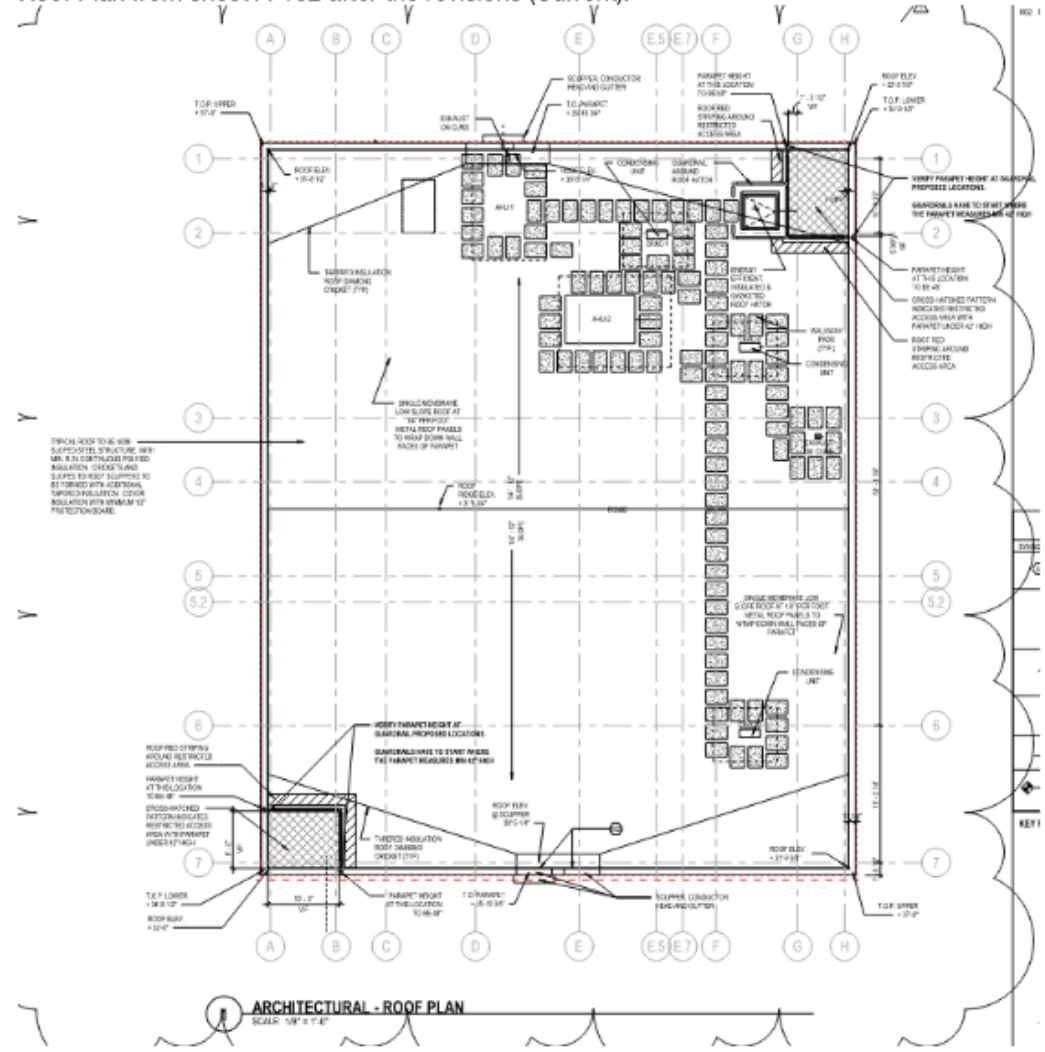
- Scupper and Downspout calculations were revised based on the comments received from the Town of Addison Building Permit reviewer.
 - Made scupper openings in the parapet wall larger
 - Add a secondary emergency overflow opening
 - The recessed and hidden downspout was shifted for the primary drain to be exposed on the exterior of the building for the ease of any future maintenance.

Scuppers and Downspouts

Exterior Elevations from sheet A-201 after the revisions (Current):



Roof Plan from sheet A-102 after the revisions (Current):



Scuppers and Downspouts



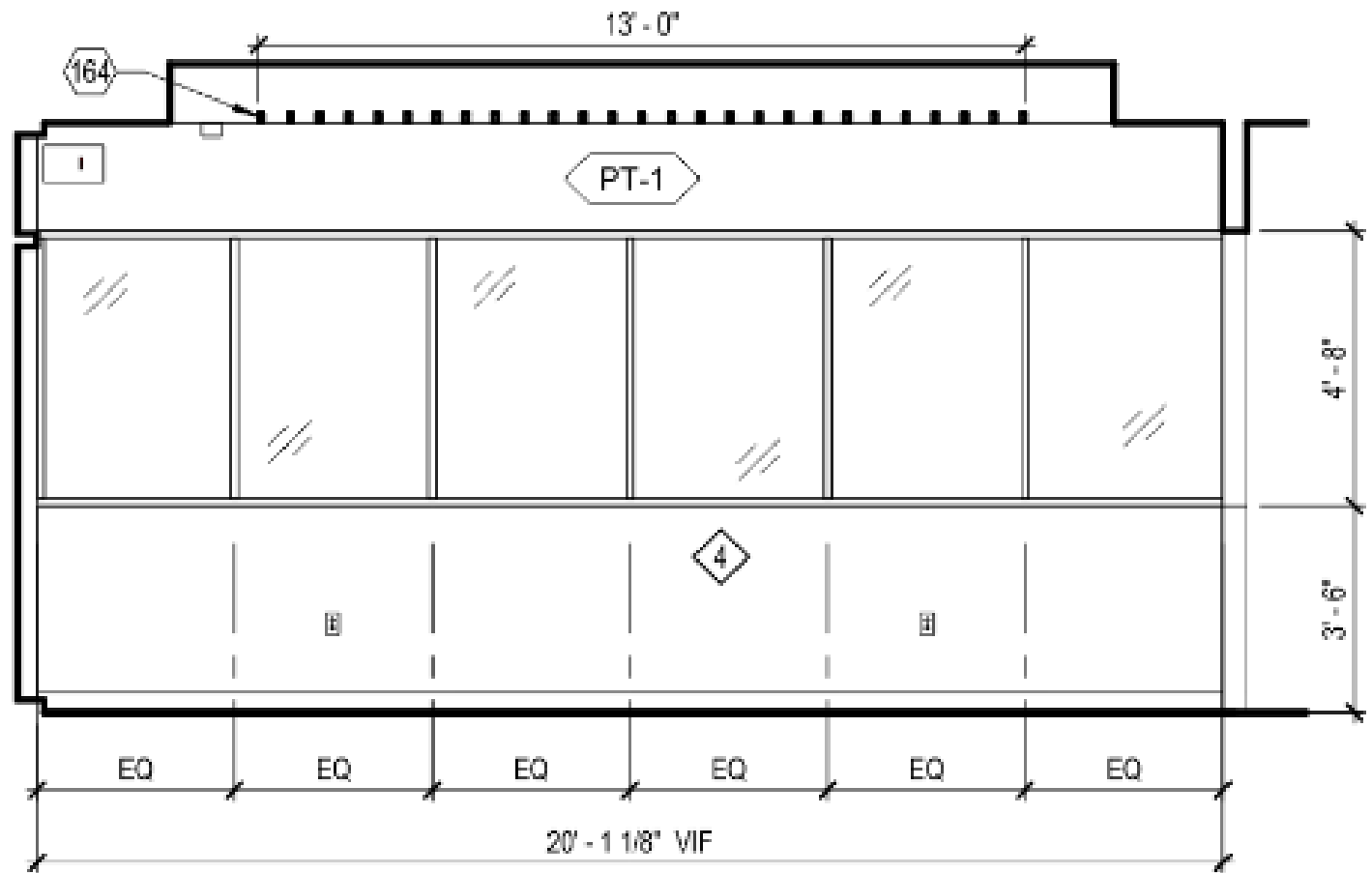
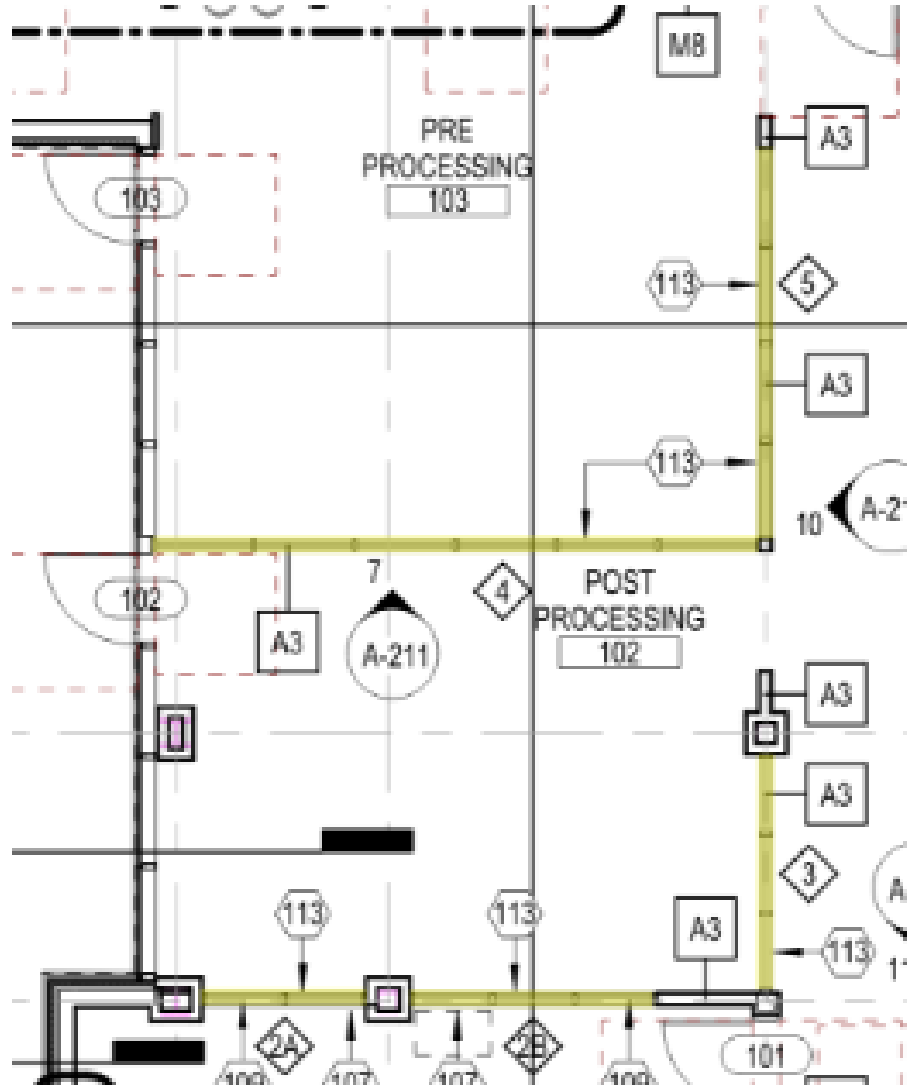
Changes to the scuppers on the south side of the building (September 25, 2020).

Drywall Support Labor

Item Number/Description	Amount	Additional Calendar Days
Drywall Support Labor (CCD-002)	\$1,078.23	0

- Drywall framing installed for the walls between the 'Pre Processing 103' and 'Post Processing 102' rooms have glass and aluminum framing that take up the top half of the wall which does not allow the stud framing to run continuously from floor to deck above.
- The wall support elements were installed below the windows inside the 3'-6" tall section of drywall framing to brace the wall from overturning/folding if a lateral force is applied to it in the middle of the wall.

Drywall Support Labor



Drywall Support Labor



Area of changes to the wall support framing viewed from the post-processing area (September 25, 2020).

Door Hardware and Mullion Finishes Color Change

Item Number/Description	Amount	Additional Calendar Days
Door Hardware and Mullion Finishes Color Change (CCD-003)	\$2,677.03	0

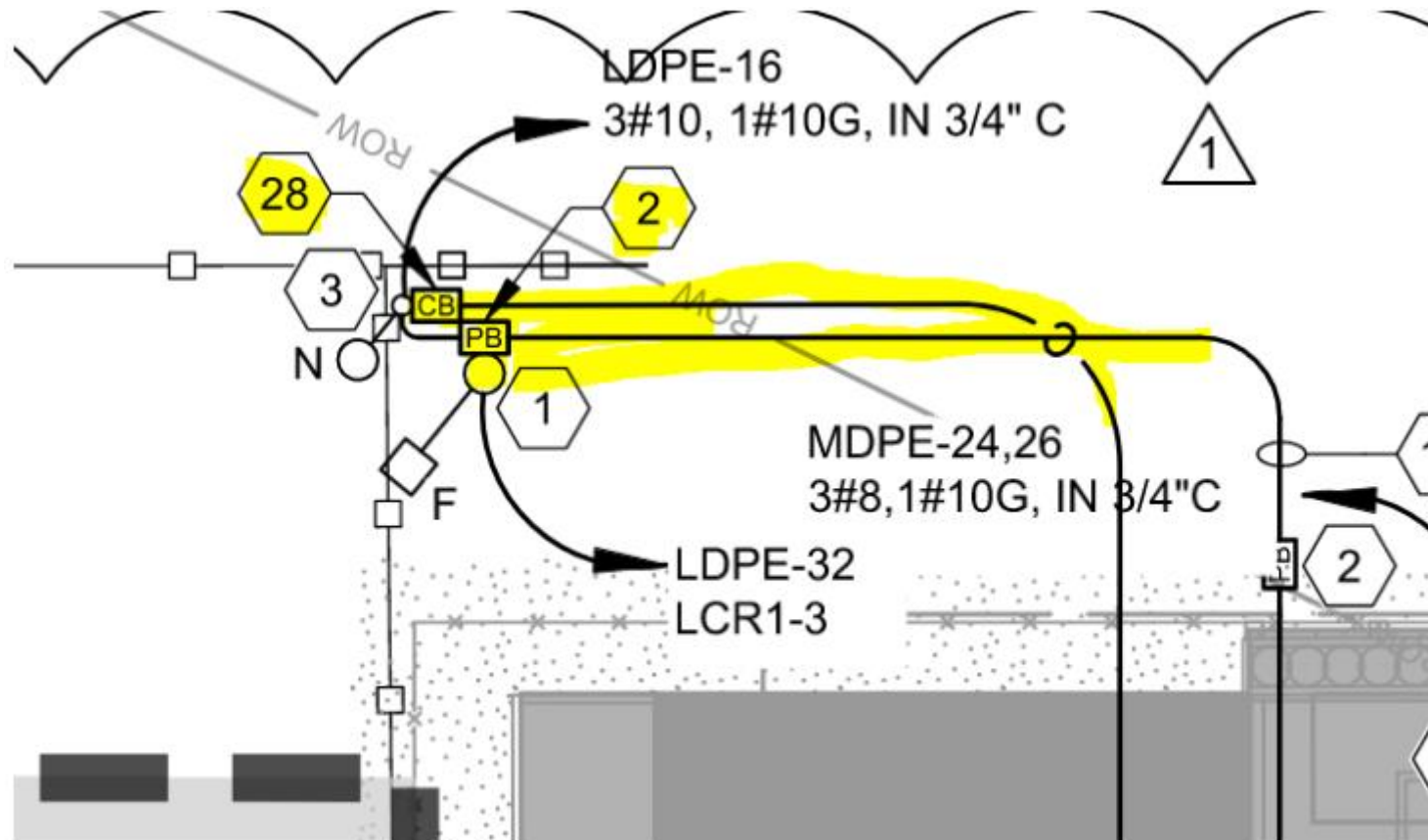
- Most exterior door hinges are a continuous geared style that run the full height of each opening. When installed on black frames, a silver stripe would have been visible on the exterior hinge side at each door.
- Similar concerns inside the building relative to the black finish of the interior glazing aluminum frames and made the same shift.
- All other hardware elements were left the originally specified finish for continuity
- All door handles were left the original finish to make them easily visible when in operation
- This change was made to minimize the added cost and quantity of revised hardware and still change the individual element that our designers were most concerned about from an aesthetic standpoint.

Northwest Security Camera Pole Removal from Project Scope

Item Number/Description	Amount	Additional Calendar Days
Northwest Security Camera Pole Removal from Project Scope	(\$1,612.00)	0

- The proposed Northwest security camera pole is in a location that will conflict with the airside construction.
- The Northwest light and camera pole concrete foundation and erection of the pole will be removed from this contract as a credit.
- The airside project will perform the installation of this light and camera pole with foundation as well as extend the conduit to this proposed pole location.
- JC Commercial will provide the light pole to the airside contractor and will still be responsible for the installation of the wiring, fixtures, and cameras upon completion of the light pole foundation performed by the airside contractor.

Northwest Security Camera Pole Removal from Project Scope

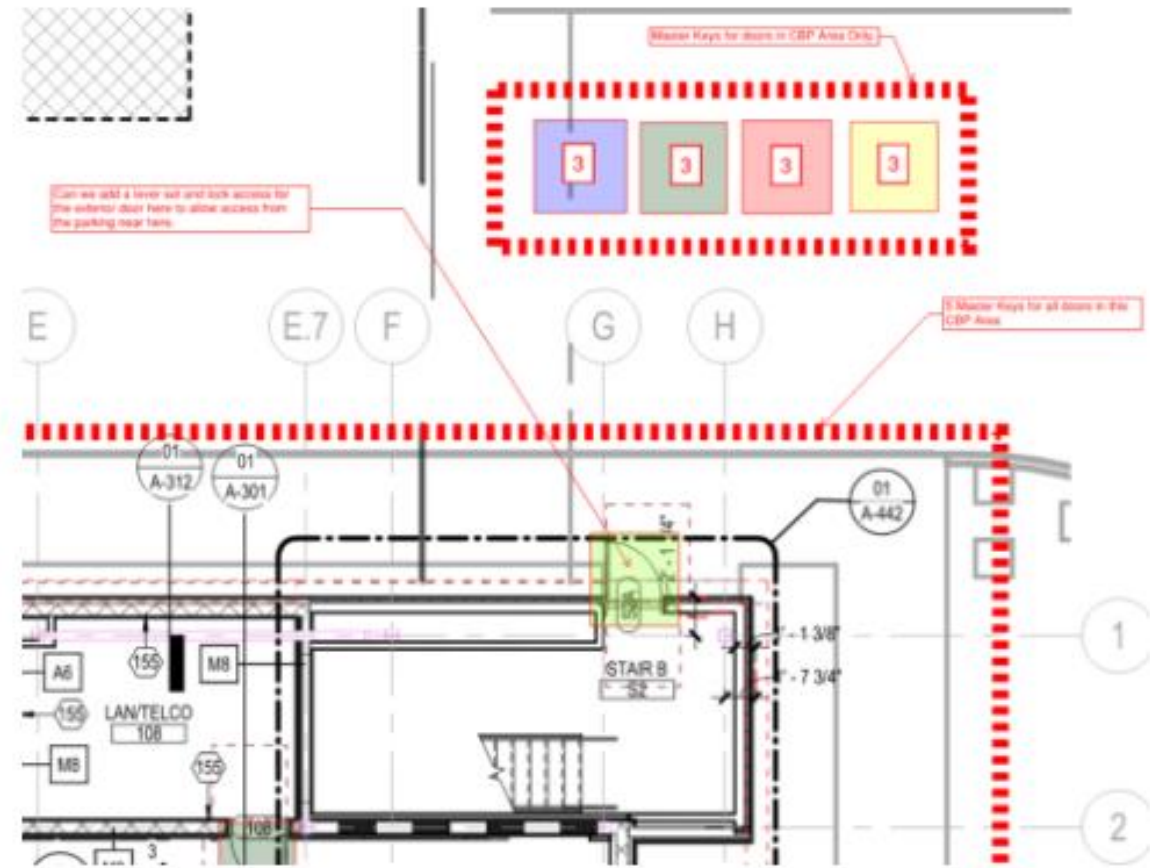


From electrical drawing - ES -102. items to be removed from the scope of work as mentioned in the list above.

Additional Hardware for Door

Item Number/Description	Amount	Additional Calendar Days
Additional Hardware for Door (CCD-004)	\$886.60	0

- Airport Staff requested to have access to the building using the exterior stairwell door at the northeast corner of the building for operational purposes.
- Additional hardware ordered for Door S2A for keying and access paths into and out of the building to generate the keying schedule.

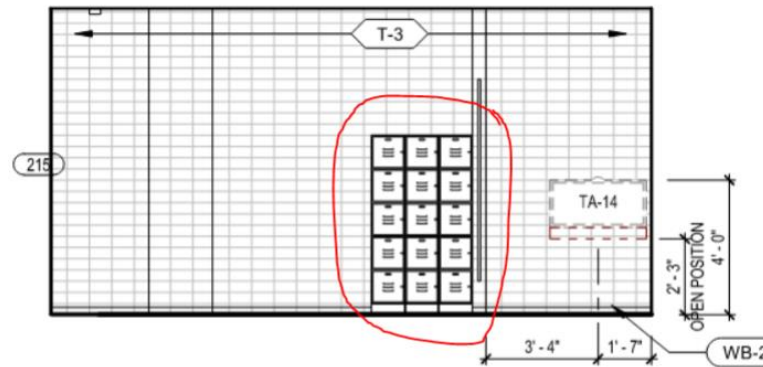
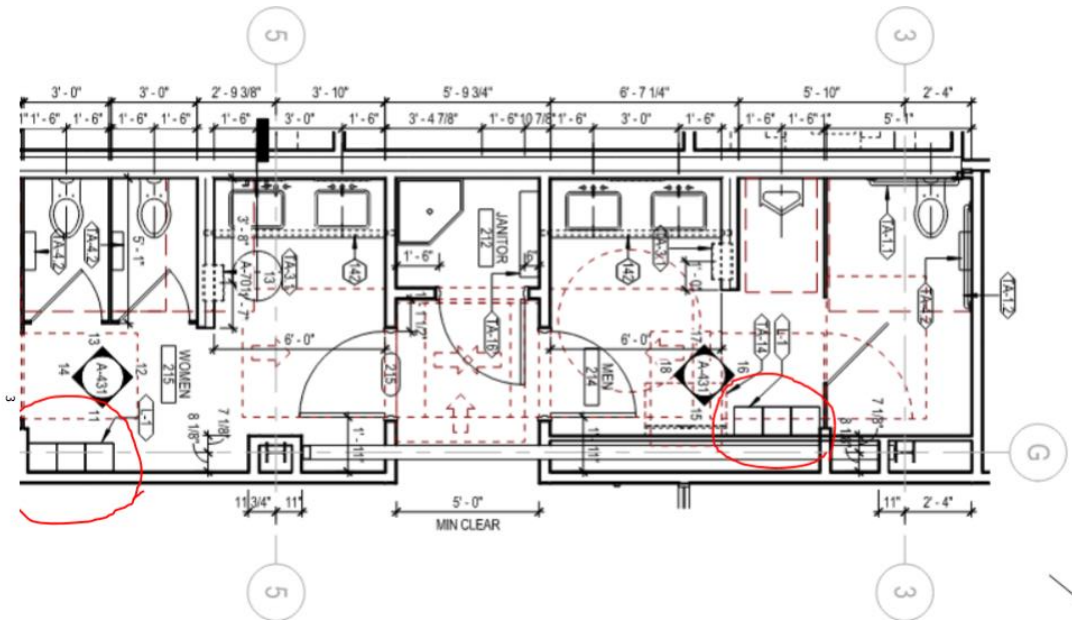


Locker Credit

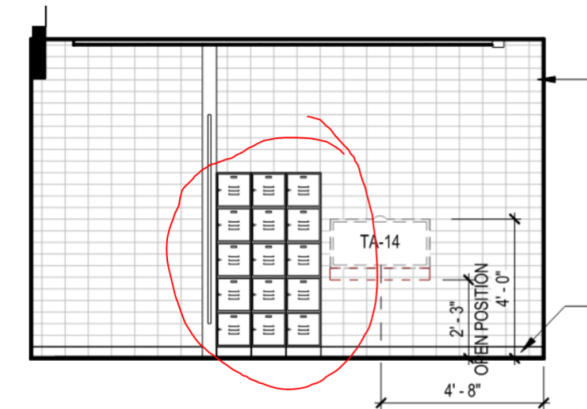


Item Number/Description	Amount	Additional Calendar Days
Locker Credit	(\$2,100.00)	0

- Lockers Credit to remove the small metal lockers from the project scope in the gang restrooms on the second floor.



11 ELEVATION @ WOMEN'S RR 215 - EAST
SCALE: 1/4" = 1'-0"



VISIONS
214 -
15 ELEVATION @ EAST
SCALE: 1/4" = 1'-0"

Questions / Discussion

The logo for Addison, featuring the word "ADDISON" in a bold, blue, sans-serif font. The text is centered within a white circle, which is set against a blue background. The blue background is part of a larger graphic element on the right side of the slide, which includes a white circle and is bordered by a dark grey triangle at the top and bottom corners.

ADDISON