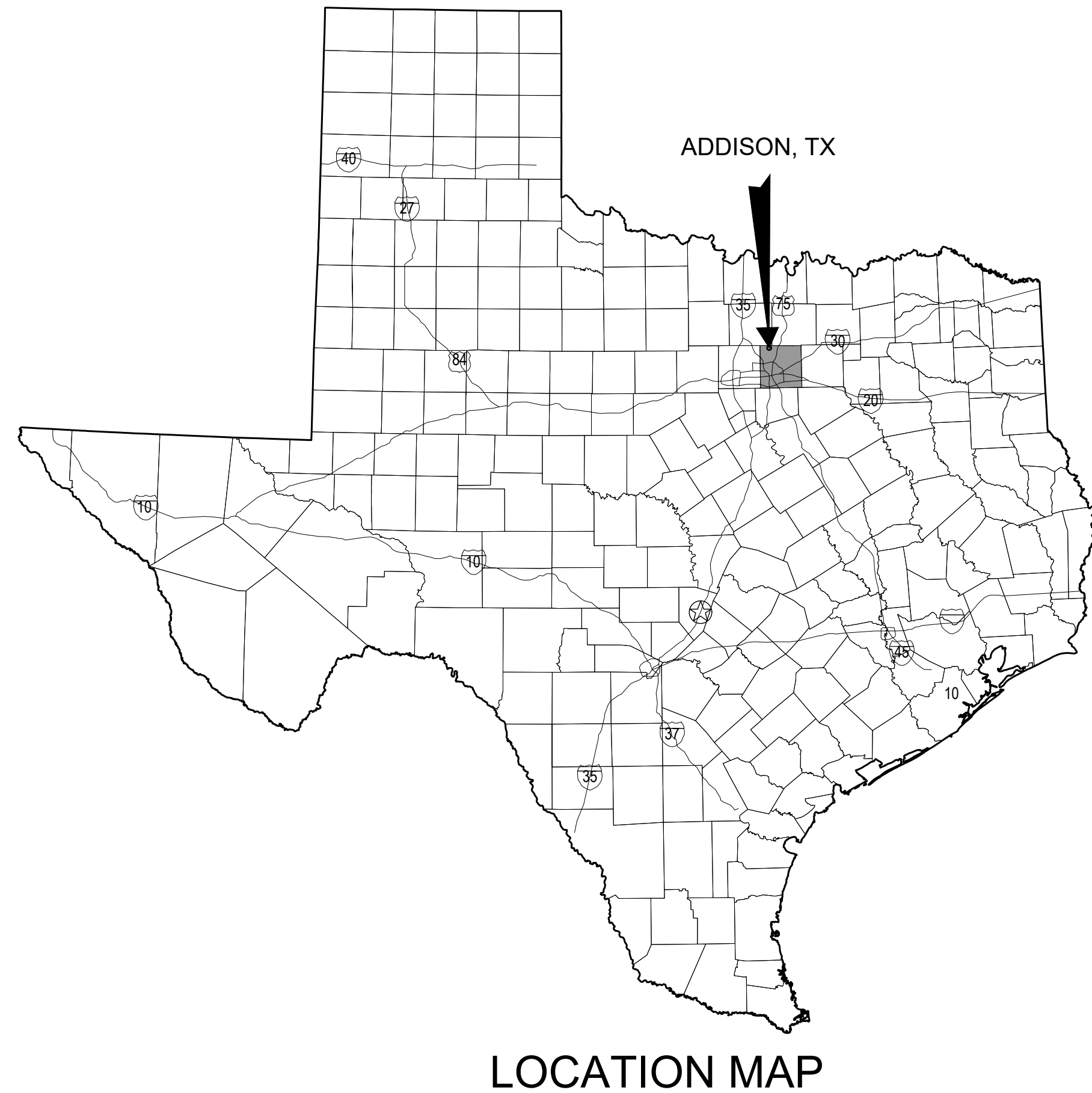


# GEORGE HADDAWAY RECONSTRUCTION CHANGE ORDER NO. 1 ADDISON AIRPORT ADDISON, TEXAS



Sheet List Table		
Sheet Number	Drawing Number	Sheet Title
1	G-101	COVER SHEET
2	C-401	DEMOLITION PLAN
3	C-402	LAYOUT PLAN
4	C-403	JOINT PLAN
5	C-404	RECONSTRUCTION DETAILS

TOWN OF ADDISON BID NO. 20-94  
GARVER PROJECT NO. 19A11000  
AUGUST, 2020



3010 Gaylord Parkway  
Suite 190  
Frisco, TX 75034  
(972) 377-7480



© 2017 GARVER, LLC  
THIS DOCUMENT, ALONG WITH THE IDEAS AND DESIGNS CONVEYED HEREIN, SHALL BE CONSIDERED INSTRUMENTS OF PROFESSIONAL SERVICE AND ARE PROPERTY OF GARVER, LLC. ANY USE, REPRODUCTION, OR DISTRIBUTION OF THIS DOCUMENT, ALONG WITH THE IDEAS AND DESIGN CONTAINED HEREIN, IS PROHIBITED UNLESS AUTHORIZED IN WRITING BY GARVER, LLC OR EXPLICITLY ALLOWED IN THE GOVERNING PROFESSIONAL SERVICES AGREEMENT FOR THIS WORK.

REGISTRATION NO.  
F-5713



DIGITALLY SIGNED  
08/20/2020

REV.	DATE	DESCRIPTION	BY
1	08/20/2020	CHANGE ORDER NO. 1	MRM

ADDISON AIRPORT  
ADDISON, TEXAS  
GEORGE HADDAWAY  
RECONSTRUCTION

COVER SHEET

JOB NO.: 19A1100  
DATE: MAR 2020  
DESIGNED BY: KKR  
DRAWN BY: KKR

BAR IS ONE INCH ON ORIGINAL DRAWING  
IF NOT ONE INCH ON THIS SHEET, ADJUST SCALES ACCORDINGLY.

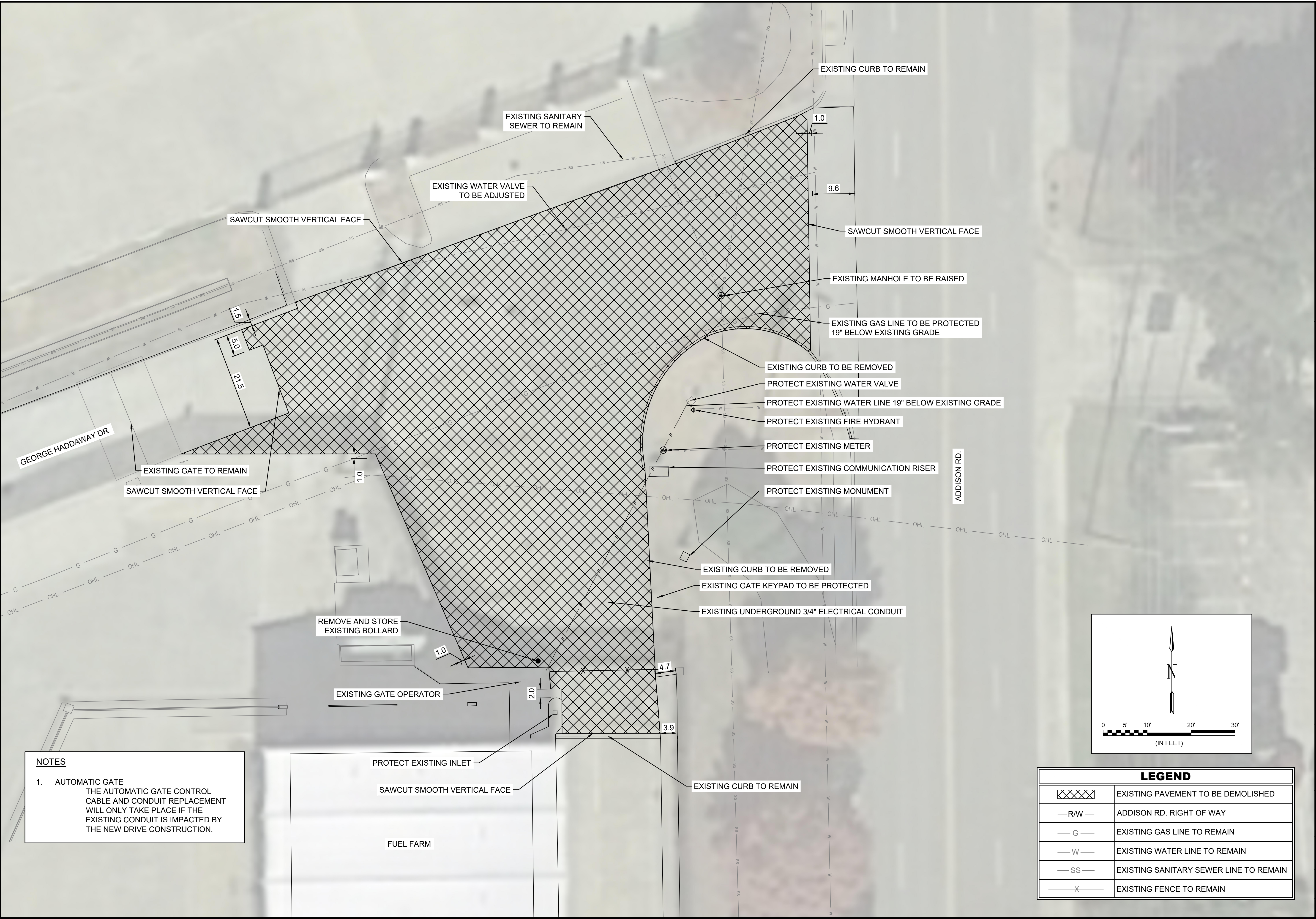
DRAWING NUMBER

**G-101**

SHEET NUMBER  
**1**

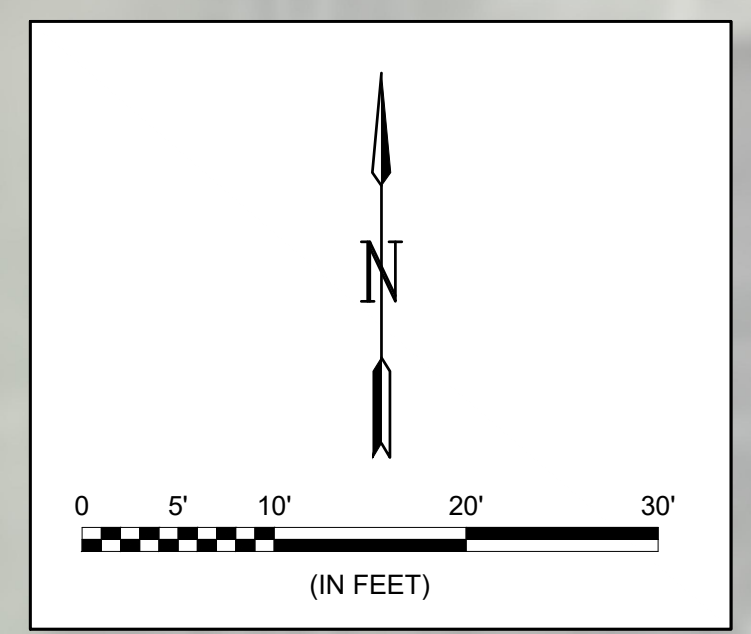


File: L:\2020\20A1100 - ADS On Call\Drawings\Work Order No. 3 - GH Intersection\ADS-WC3-C101-LP.dwg, Last Save: 8/20/2020 2:39 PM, Last saved by: RJTierney  
 Last plotted by: Tierney, Richard J., Plot Style: AECmono.ctb, Plot Scale: 1:2.5849, Plot Date: 8/20/2020 2:48 PM, Plotter used: None



**NOTES**

1. AUTOMATIC GATE  
 THE AUTOMATIC GATE CONTROL CABLE AND CONDUIT REPLACEMENT WILL ONLY TAKE PLACE IF THE EXISTING CONDUIT IS IMPACTED BY THE NEW DRIVE CONSTRUCTION.



LEGEND	
	EXISTING PAVEMENT TO BE DEMOLISHED
	ADDISON RD. RIGHT OF WAY
	EXISTING GAS LINE TO REMAIN
	EXISTING WATER LINE TO REMAIN
	EXISTING SANITARY SEWER LINE TO REMAIN
	EXISTING FENCE TO REMAIN

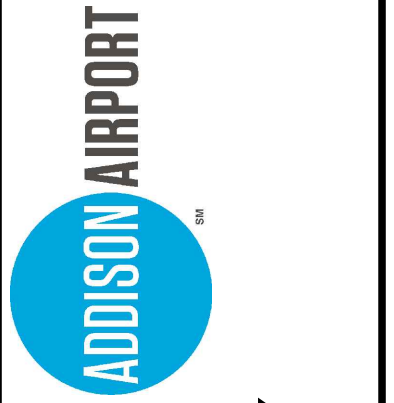


© 2020 GARVER, LLC  
 THIS DOCUMENT, ALONG WITH THE IDEAS AND DESIGNS CONVEYED HEREIN, SHALL BE CONSIDERED INSTRUMENTS OF PROFESSIONAL SERVICE AND ARE PROPERTY OF GARVER, LLC. ANY USE, REPRODUCTION, OR DISTRIBUTION OF THIS DOCUMENT, ALONG WITH THE IDEAS AND DESIGN CONTAINED HEREIN, IS PROHIBITED UNLESS AUTHORIZED IN WRITING BY GARVER, LLC OR EXPLICITLY ALLOWED IN THE GOVERNING PROFESSIONAL SERVICES AGREEMENT FOR THIS WORK.

REGISTRATION NO.  
 F-5713



REV.	DATE	DESCRIPTION	BY
1	08/20/2020	CHANGE ORDER NO. 1	MRW



ADDISON AIRPORT  
 ADDISON, TEXAS  
 GEORGE HADDAWAY  
 RECONSTRUCTION

GEORGE HADDAWAY  
 ENTRANCE  
 DEMOLITION

JOB NO.: 20A1100  
 DATE: JUL 2020  
 DESIGNED BY: KKR  
 DRAWN BY: KKR

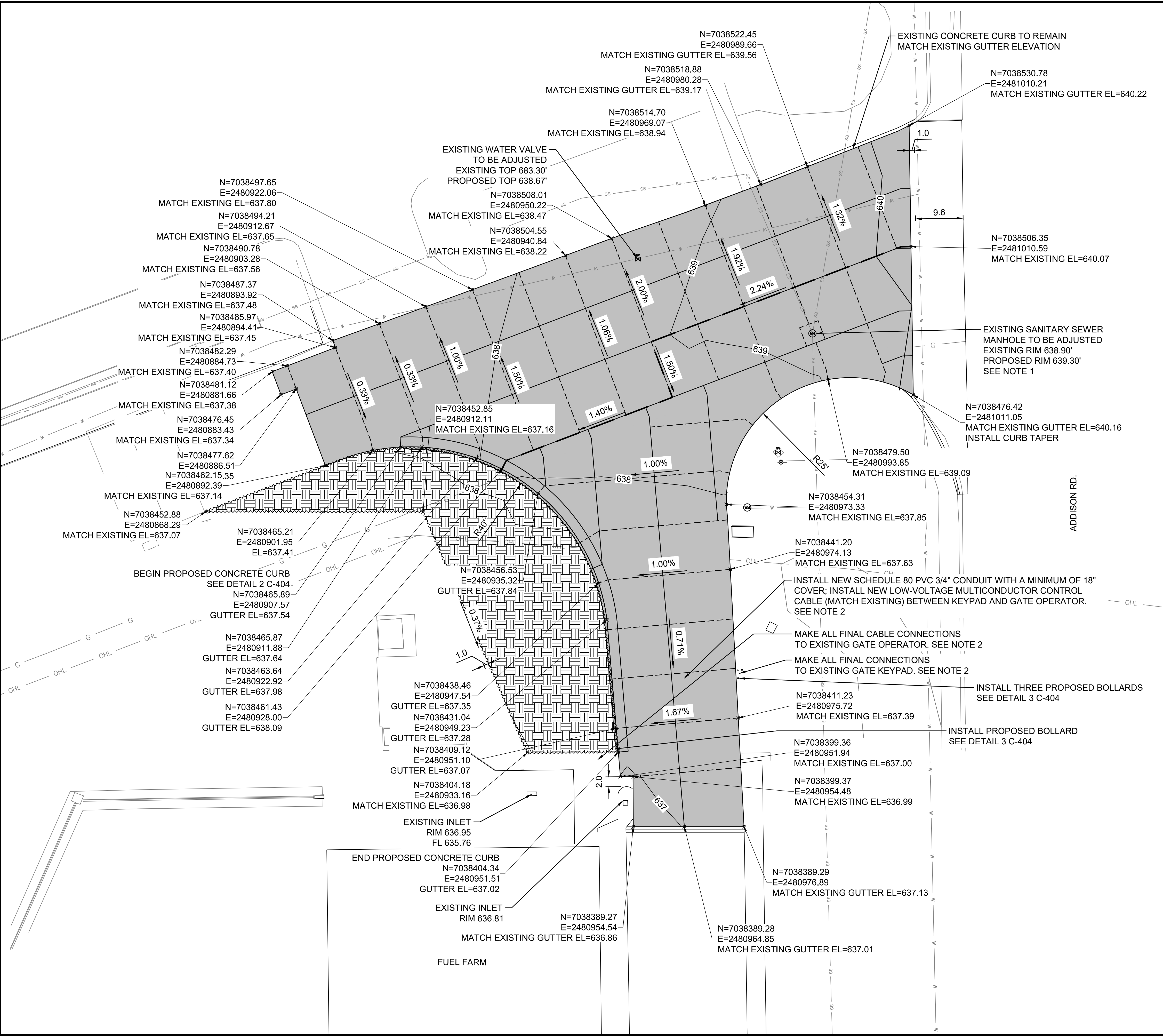
BAR IS ONE INCH ON ORIGINAL DRAWING  
 IF NOT ONE INCH ON THIS SHEET, ADJUST SCALES ACCORDINGLY.

DRAWING NUMBER  
**C-401**

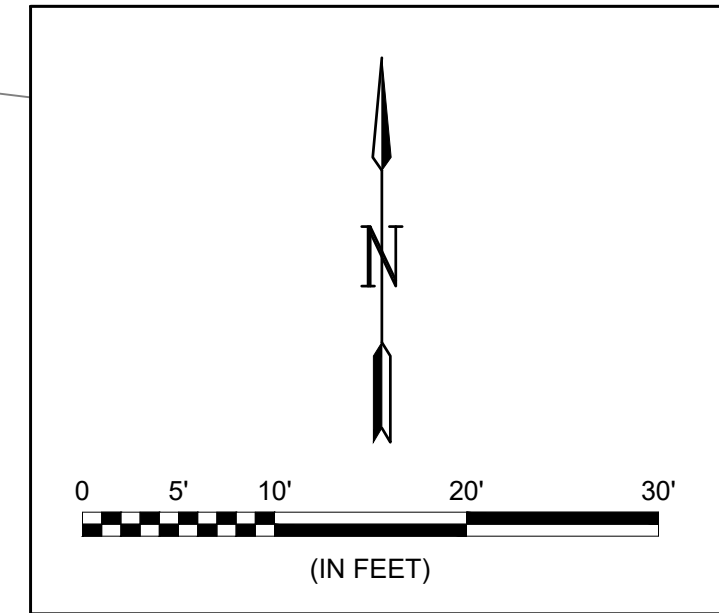
SHEET NUMBER  
**2**



File: L:\2020\20A1100 - ADS On Call\Drawings\Work Order No. 3 - GH Intersection\ADS-WO3-C102-LP.dwg, Last Save: 8/20/2020 2:40 PM, Last saved by: R.Tierney  
 Last plotted by: Tierney, Richard J., Plot Style: AECmono.ctb, Plot Scale: 1:1, Plot Date: 8/20/2020 2:48 PM, Plotter user: AutoCAD PDF (General Documentation).pc3



- NOTES**
- EXISTING MANHOLE TO BE ADJUSTED 4.80" USING 2" RISER SECTIONS.
  - AUTOMATIC GATE  
 THE AUTOMATIC GATE CONTROL CABLE AND CONDUIT REPLACEMENT WILL ONLY TAKE PLACE IF THE EXISTING CONDUIT IS IMPACTED BY THE NEW DRIVE CONSTRUCTION.



LEGEND	
	PROPOSED CONCRETE PAVEMENT
	PROPOSED GRADING LIMITS
	LONGITUDINAL CONSTRUCTION JOINT
	SAWED DUMMY JOINT
	PROPOSED DRAINAGE PIPES
	EXISTING WATER LINE TO REMAIN
	EXISTING SANITARY SEWER LINE TO REMAIN
	ADDISON RD. RIGHT OF WAY
	PROPOSED CONTOUR
	EXISTING FENCE TO REMAIN



© 2020 GARVER, LLC  
 THIS DOCUMENT, ALONG WITH THE IDEAS AND DESIGNS CONVEYED HEREIN, SHALL BE CONSIDERED INSTRUMENTS OF PROFESSIONAL SERVICE AND ARE PROPERTY OF GARVER, LLC. ANY USE, REPRODUCTION, OR DISTRIBUTION OF THIS DOCUMENT, ALONG WITH THE IDEAS AND DESIGN CONTAINED HEREIN, IS PROHIBITED UNLESS AUTHORIZED IN WRITING BY GARVER, LLC OR EXPLICITLY ALLOWED IN THE GOVERNING PROFESSIONAL SERVICES AGREEMENT FOR THIS WORK.

REGISTRATION NO.  
 F-5713



REV.	DATE	DESCRIPTION	BY
1	08/20/2020	CHANGE ORDER NO. 1	MRW

ADDISON AIRPORT  
 ADDISON, TEXAS  
 GEORGE HADDAWAY  
 RECONSTRUCTION

GEORGE HADDAWAY  
 ENTRANCE LAYOUT

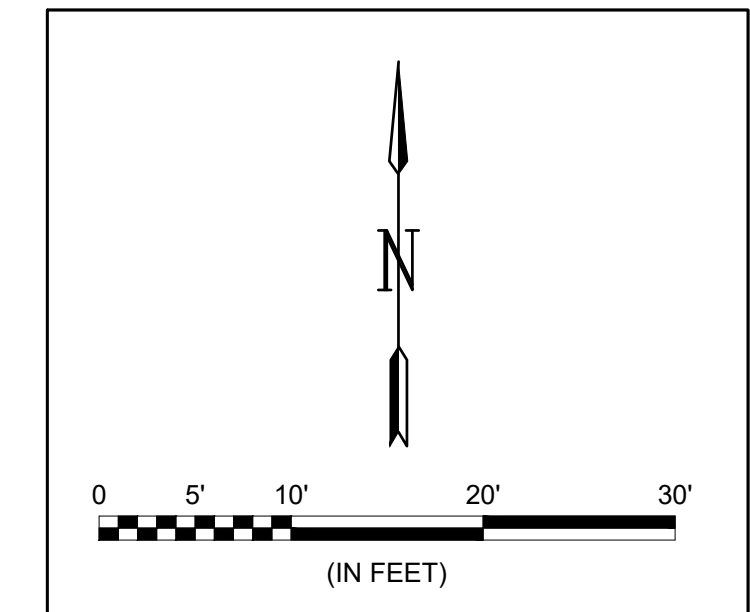
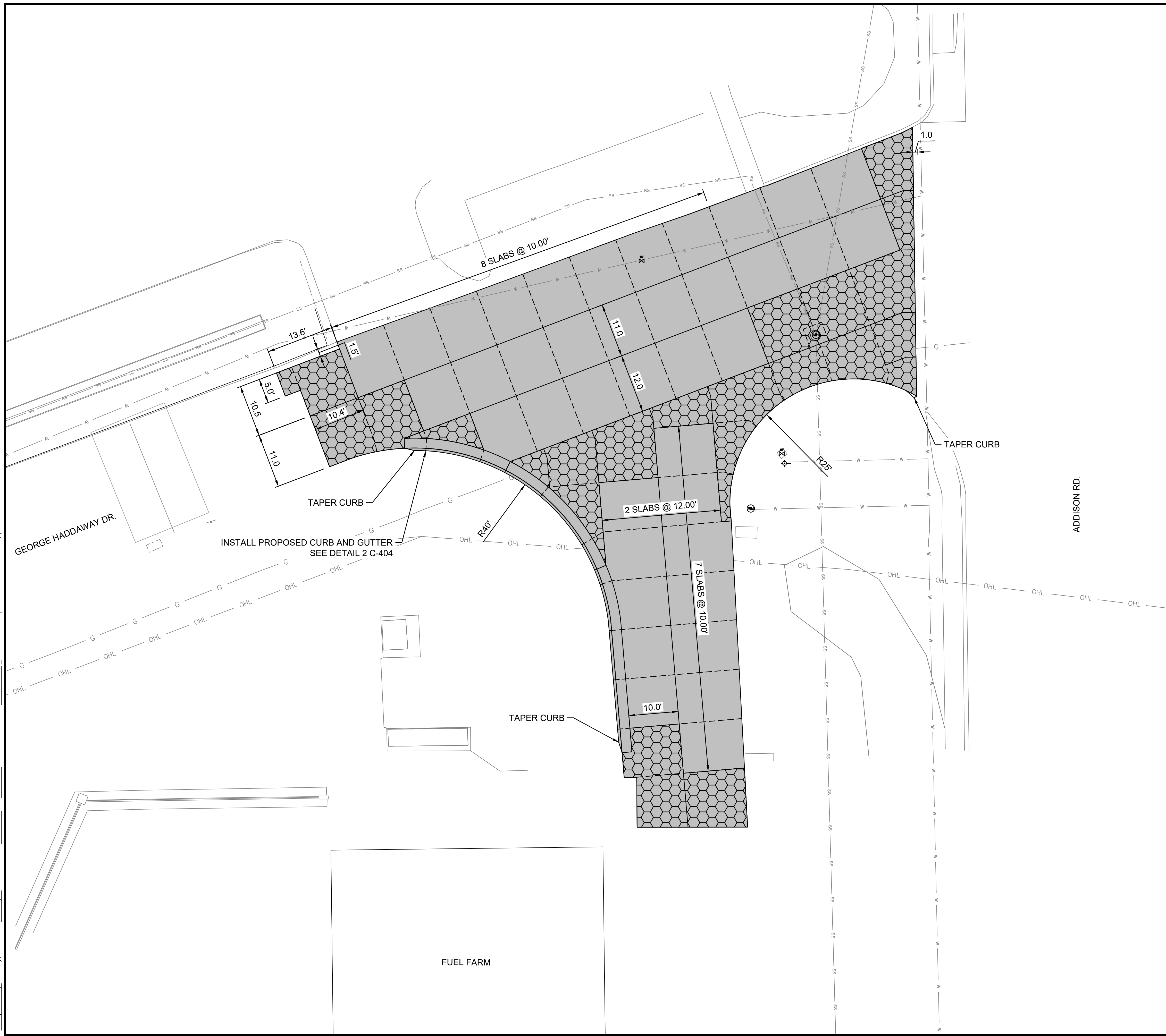
JOB NO.: 20A1100  
 DATE: JUL 2020  
 DESIGNED BY: KKR  
 DRAWN BY: KKR

BAR IS ONE INCH ON ORIGINAL DRAWING  
 IF NOT ONE INCH ON THIS SHEET, ADJUST SCALES ACCORDINGLY.

DRAWING NUMBER  
**C-402**  
 SHEET NUMBER  
**3**



File: L:\2020\20A1100 - ADS On Call\Drawings\Work Order No. 3 - GH Intersection\ADS-WC3-C102-LP.dwg, Last Save: 8/20/2020 2:40 PM, Last saved by: R\Tterney  
 Last plotted by: Terney, Richard J., Plot Style: AECmono.ctb, Plot Scale: 1:1, Plot Date: 8/20/2020 2:48 PM, Plotter usest: \_AutoCAD PDF (General Documentation).pc3

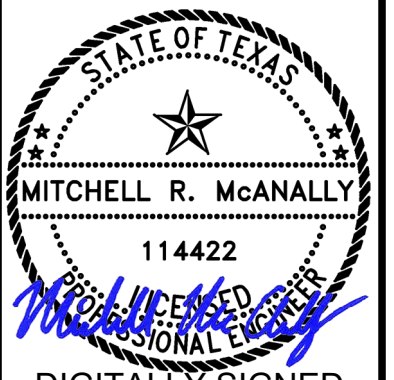


LEGEND	
	PROPOSED CONCRETE PAVEMENT
	REINFORCED CONCRETE PAVEMENT
	LONGITUDINAL CONSTRUCTION JOINT
	SAWED DUMMY JOINT
	PROPOSED DRAINAGE PIPES
	EXISTING WATER LINE TO REMAIN
	EXISTING SANITARY SEWER LINE TO REMAIN
	ADDISON RD. RIGHT OF WAY
	EXISTING FENCE TO REMAIN



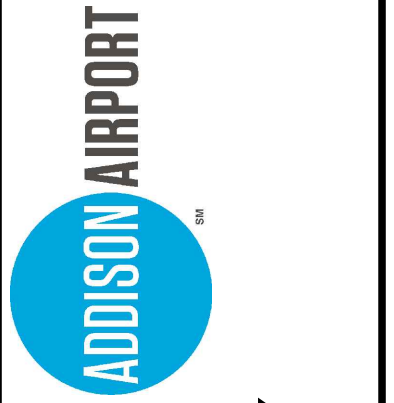
© 2020 GARVER, LLC  
 THIS DOCUMENT, ALONG WITH THE IDEAS AND DESIGNS CONVEYED HEREIN, SHALL BE CONSIDERED INSTRUMENTS OF PROFESSIONAL SERVICE AND ARE PROPERTY OF GARVER, LLC. ANY USE, REPRODUCTION, OR DISTRIBUTION OF THIS DOCUMENT, ALONG WITH THE IDEAS AND DESIGN CONTAINED HEREIN, IS PROHIBITED UNLESS AUTHORIZED IN WRITING BY GARVER, LLC OR EXPLICITLY ALLOWED IN THE GOVERNING PROFESSIONAL SERVICES AGREEMENT FOR THIS WORK.

REGISTRATION NO. F-5713



DIGITALLY SIGNED 08/20/2020

REV.	DATE	DESCRIPTION	BY
1	08/20/2020	CHANGE ORDER NO. 1	MRW



ADDISON AIRPORT  
 ADDISON, TEXAS

GEORGE HADDAWAY  
 RECONSTRUCTION

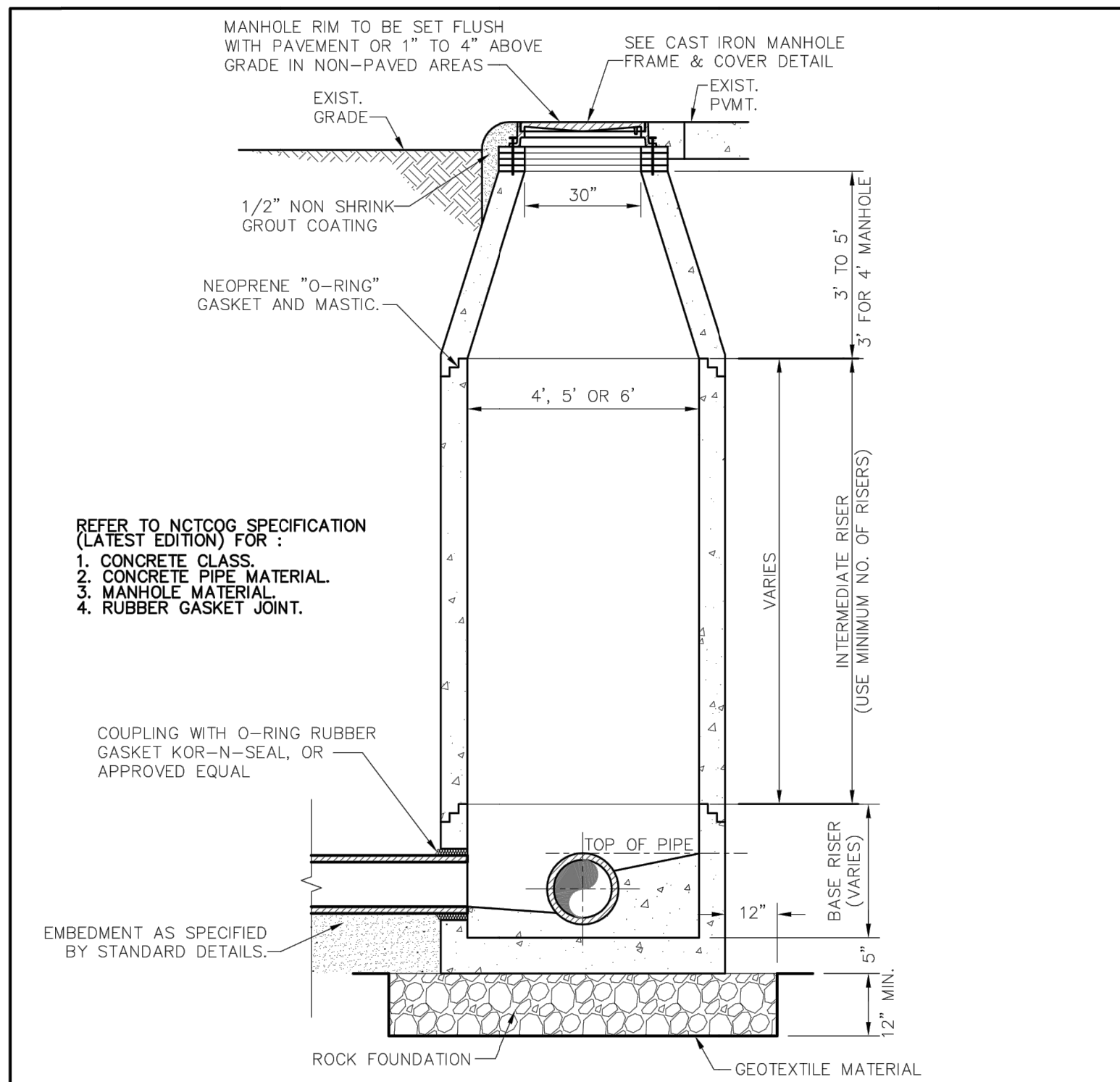
GEORGE HADDAWAY  
 ENTRANCE JOINT  
 PLAN

JOB NO.: 20A1100  
 DATE: JUL 2020  
 DESIGNED BY: KKR  
 DRAWN BY: KKR

BAR IS ONE INCH ON ORIGINAL DRAWING  
 IF NOT ONE INCH ON THIS SHEET, ADJUST SCALES ACCORDINGLY.

DRAWING NUMBER  
**C-403**  
 SHEET NUMBER  
**4**

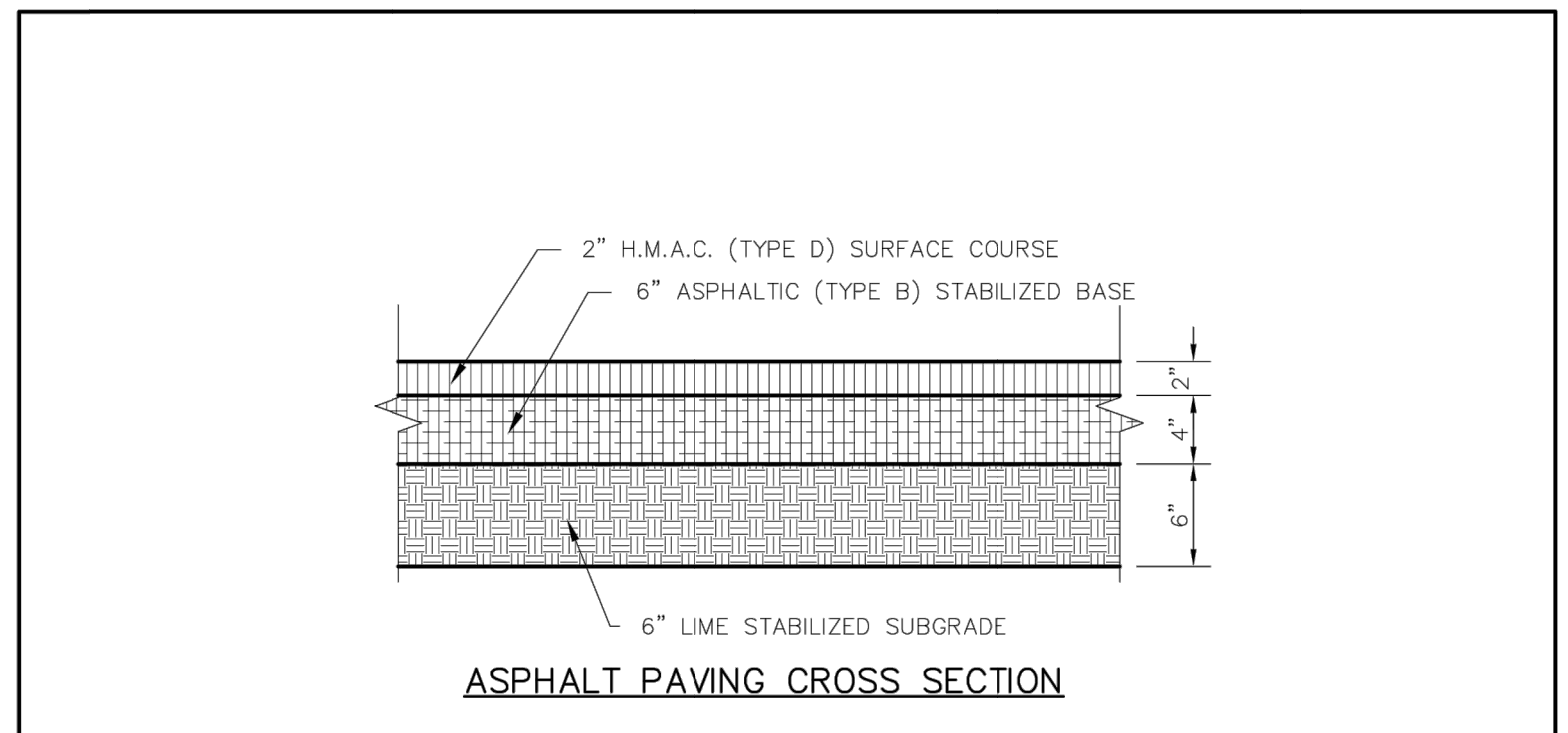




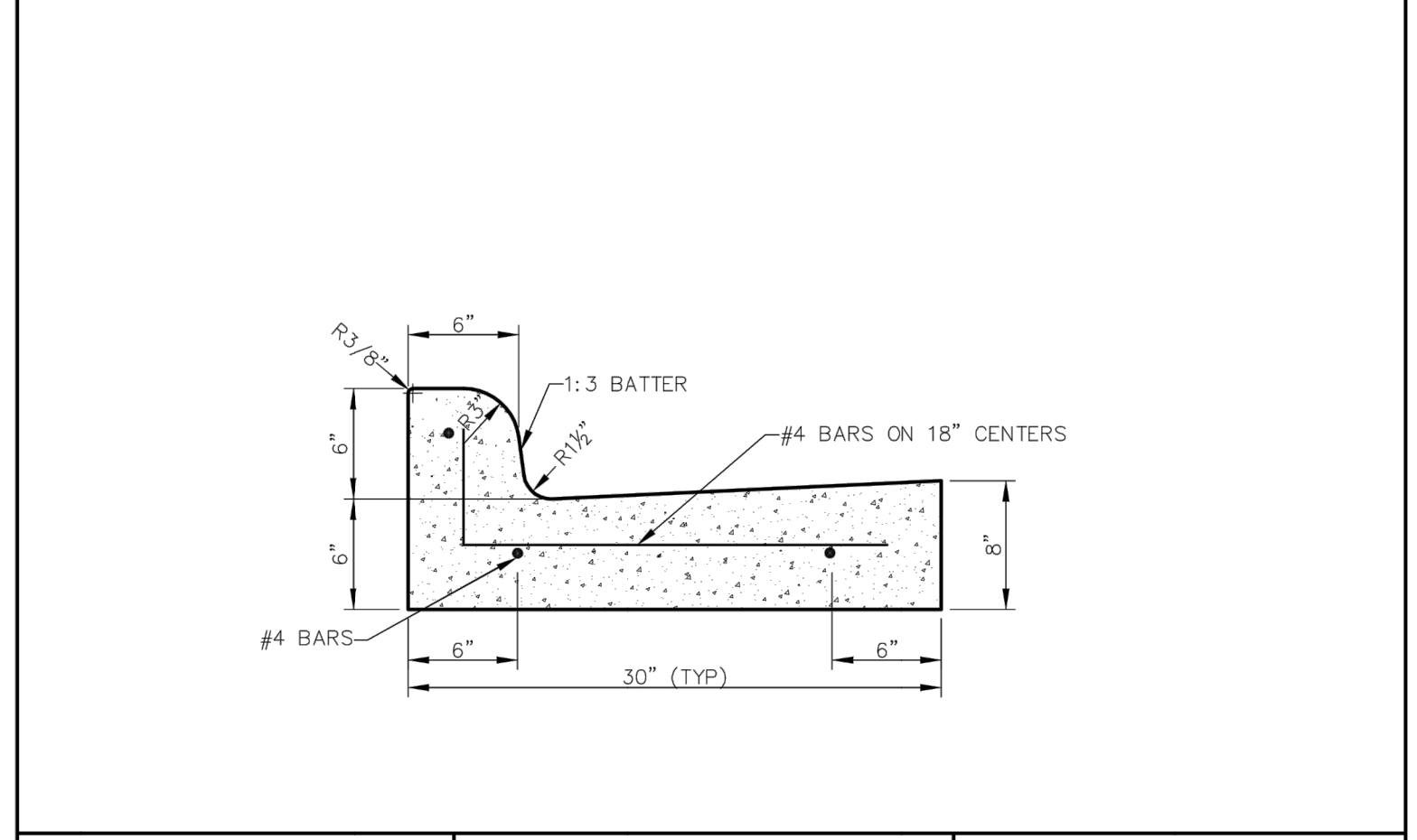
- REFER TO NCTCOG SPECIFICATION (LATEST EDITION) FOR :
1. CONCRETE CLASS.
  2. CONCRETE PIPE MATERIAL.
  3. MANHOLE MATERIAL.
  4. RUBBER GASKET JOINT.
- NOTES:
1. IF FALSE MANHOLE BOTTOMS ARE REQUIRED, THEY SHALL BE CONSTRUCTED, INSTALLED, AND REMOVED PER WASTEWATER MANHOLE FALSE BOTTOM STD. DETAIL.
  2. WHERE MANHOLE'S ARE OUTSIDE OF PAVEMENT, FRAME & COVER SHALL BE CENTERED IN 5'x5' CONCRETE PAD CLASS 'A' CONCRETE, 4" THICK
  3. ALL MANHOLES SHALL PASS VACUUM TEST AS PER NCTCOG SPECIFICATIONS

 PUBLIC WORKS DEPARTMENT	PRECAST CONCRETE PIPE MANHOLE ALTERNATE "B"	STANDARD CONSTRUCTION DETAILS WASTEWATER		
		DATE: AUGUST, 2010	REV DATE:	SHEET : SD-WW07

1 MANHOLE ADJUSTMENT DETAIL  
C-404 SCALE: NONE

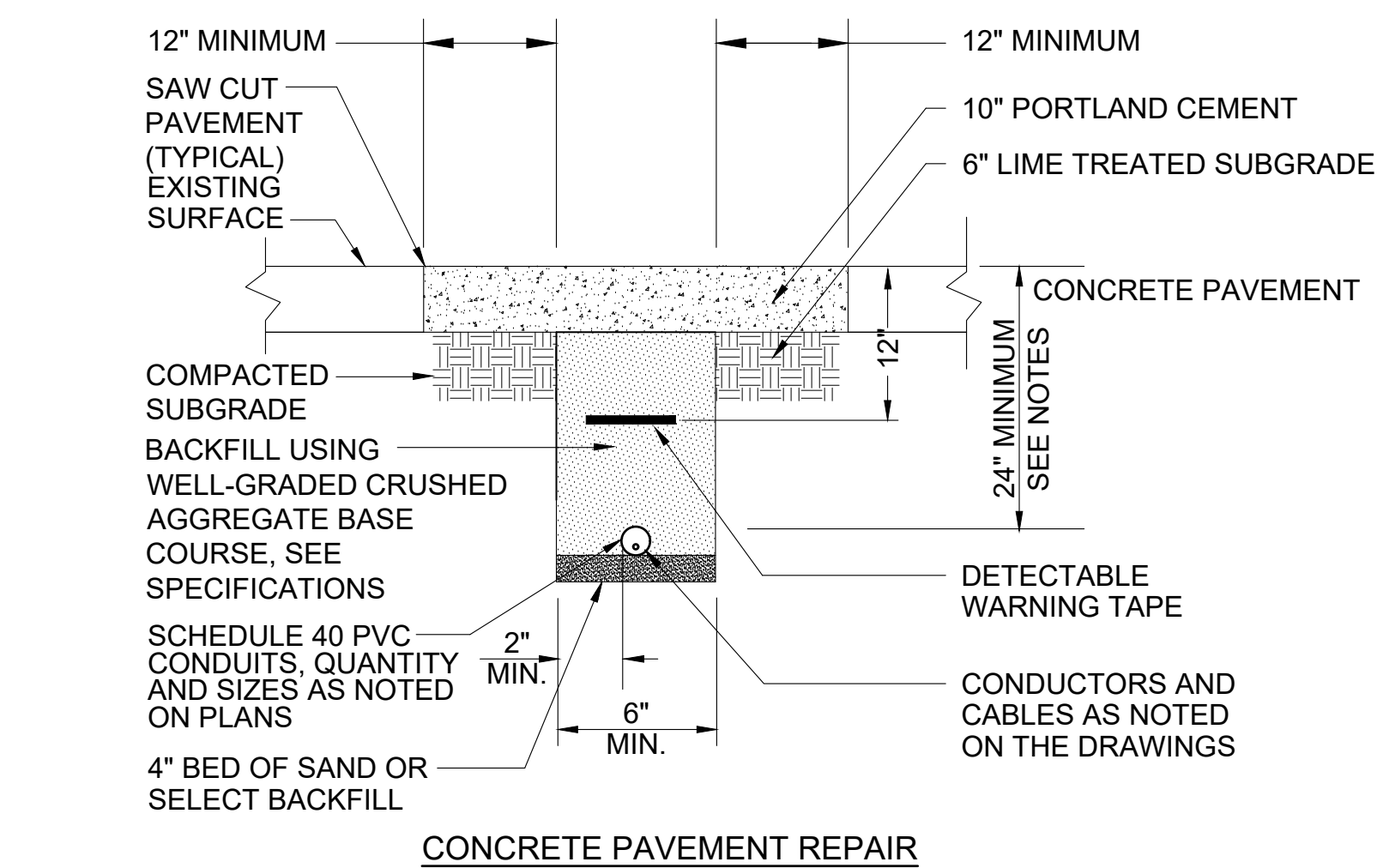


NOTE:  
OUT OF 6" INTO EXISTING PAVEMENT IS REQUIRED FOR CONSTRUCTION JOINT WITH NEW POURS TO GET A SMOOTH FINISH.



 PUBLIC WORKS DEPARTMENT	CURB AND GUTTER & ASPHALT PAVING CROSS SECTION	STANDARD CONSTRUCTION DETAILS PAVING		
		DATE: AUGUST, 2010	REV DATE:	SHEET : SD-P06

2 TYPICAL CURB AND GUTTER DETAIL  
C-404 SCALE: NONE



4 NON-ENCASED ELECTRICAL DUCT DETAIL  
C-404 SCALE: NONE

ELECTRICAL DUCT NOTES

1. CONTRACTOR SHALL STAKE THE DUCT INSTALLATION IN PLAN AND ELEVATION FOR NEW ELECTRICAL DUCTS TO AVOID EXISTING UTILITIES. STAKING PLAN SHALL BE APPROVED BY OWNER AND ENGINEER PRIOR TO WORK.
2. CONTRACTOR SHALL ADJUST THE DEPTH OF THE ELECTRICAL DUCTS AS REQUIRED TO MAINTAIN THE MINIMUM COVER REQUIREMENT INDICATED AND AVOID EXISTING UTILITIES.
3. SIMILAR CONSTRUCTION FOR OTHER DUCT SIZES. SEE DUCT BANK SCHEDULE FOR QUANTITY AND SIZES.
4. INSTALL DUCT CONDUIT SUPPORTS AT 5'-0" O.C. MAXIMUM SPACING. UTILIZE LOCKING COLLARS OR HOLD DOWN BARS WITH ANCHORS TO PREVENT DUCT FLOTATION. (TYPICAL ALL DUCTS).
5. OFFSETS AND BENDS OVER 1- DEGREES AND ELBOWS IN PVC CONDUIT RUNS SHALL BE SCHEDULE 80 PVC CONDUIT.
6. NO PVC SHALL EMERGE FROM THE GROUND OR CONCRETE SLAB OR ENCASMENT, PVC SHALL CONVERT TO PVC COATED GALVANIZED RIGID STEEL CONDUIT PRIOR TO ITS EMERGENCE.
7. SPARE PVC COATED GALVANIZED RIGID STEEL CONDUITS SHALL STUB UP 6" ABOVE FINISHED GRADE OR CONCRETE PAD SURFACE AND BE CAPPED WATERTIGHT.
8. INSTALL CONDUCTORS AND CABLES AS NOTED ON DRAWING. INSTALL PULLWIRE IN ALL SPARE DUCTS/CONDUITS.
9. MINIMUM COVER REQUIREMENT FOR DUCT BANKS UNDER ROADS, DRIVEWAYS AND PARKING LOTS SHALL BE 24".
10. MINIMUM COVER REQUIREMENTS FOR ELECTRICAL SECONDARY SERVICE DUCT BANKS SHALL BE 30".
11. MINIMUM COVER REQUIREMENTS FOR ELECTRICAL PRIMARY SERVICE DUCT BANKS SHALL BE 36".
12. VERTICAL AND HORIZONTAL DISTANCES BETWEEN CONDUITS SHALL BE 3" MINIMUM FOR DUCTS CONTAINING CIRCUITS OVER 600 VOLTS.
13. MARKER TAPE SHALL BE A DETECTABLE TYPE CONSTRUCTION WITH RED BACKGROUND AND BLACK LETTERING, "CAUTION-BURIED ELECTRICAL LINE BELOW".
14. END BELLS OR COUPLINGS WITH REMOVABLE FACTORY PLUGS SHALL BE INSTALLED FLUSH WITH THE CONCRETE ENCASMENT AT ACCESS POINTS.
15. ROCK REMOVAL SHALL BE CONSIDERED SUBSIDIARY TO DUCT INSTALLATION.
16. BACKFILL SHALL BE 1.67 CY.

© 2020 GARVER, LLC  
THIS DOCUMENT, ALONG WITH THE IDEAS AND DESIGNS CONVEYED HEREIN, SHALL BE CONSIDERED INSTRUMENTS OF PROFESSIONAL SERVICE AND ARE PROPERTY OF GARVER, LLC. ANY USE, REPRODUCTION, OR DISTRIBUTION OF THIS DOCUMENT, ALONG WITH THE IDEAS AND DESIGN CONTAINED HEREIN, IS PROHIBITED UNLESS AUTHORIZED IN WRITING BY GARVER, LLC OR EXPLICITLY ALLOWED IN THE GOVERNING PROFESSIONAL SERVICES AGREEMENT FOR THIS WORK.

REGISTRATION NO. F-5713

DIGITALLY SIGNED  
08/20/2020

REV.	DATE	DESCRIPTION	BY
1	08/20/2020	CHANGE ORDER NO. 1	MRW

ADDISON AIRPORT  
ADDISON, TEXAS

GEORGE HADDAWAY  
RECONSTRUCTION

GEORGE HADDAWAY  
ENTRANCE DETAILS

JOB NO.: 20A1100  
DATE: JUL 2020  
DESIGNED BY: KKR  
DRAWN BY: KKR

BAR IS ONE INCH ON ORIGINAL DRAWING  
IF NOT ONE INCH ON THIS SHEET, ADJUST SCALES ACCORDINGLY.

DRAWING NUMBER  
**C-404**  
SHEET NUMBER  
**5**