

RESTAURANT SEAT COUNT:

dining I	40
dining II	40
bar	31
TOTAL	111

SQ FT:

first floor	5,028 sq ft
second floor	5,092 sq ft
total sq ft	10,110 sq ft

ACTION	
APPROVED	DENIED
STAFF	DATE
COUNCIL	DATE

See the Staff Approval Letter or Council Resolution for any conditions associated with the approval of this project.

PROJECT TEAM:

OWNER
Mikolajko Concepts
2803 Main Street
Suite 110, Dallas, TX 75226
7.214.989.1222

DESIGN TEAM / ARCHITECTURE
Coeval Studio
154 Leslie St.
Dallas, Texas 75207
214.331.4297 - Office

MEP ENGINEER
SCHMIDT & STACY Consulting Engineers, Inc.
2711 N Haskell Ave.
Dallas, TX 75204
214.874.0200 - Office
214.824.1155 - Fax

STRUCTURAL ENGINEER
HENNESSEY Engineering, Inc.
1417 W. Main, Suite 100
Carrollton, Texas 75006
972.245.9478 - Office

PROPERTY OWNER
Village On The Parkway
5100 Belt Road, Suite 430
Dallas, Texas 75254
972.385.8054 - Office
Contact: Susan Steelhammer, cam



These drawings and copies are the copyrighted property of Coeval Studio. They may not be used for projects other than the designed project without the specific written approval of Coeval Studio.

COEVAL

www.coevalstudio.com
info@coevalstudio.com
copyright © all rights reserved 2018

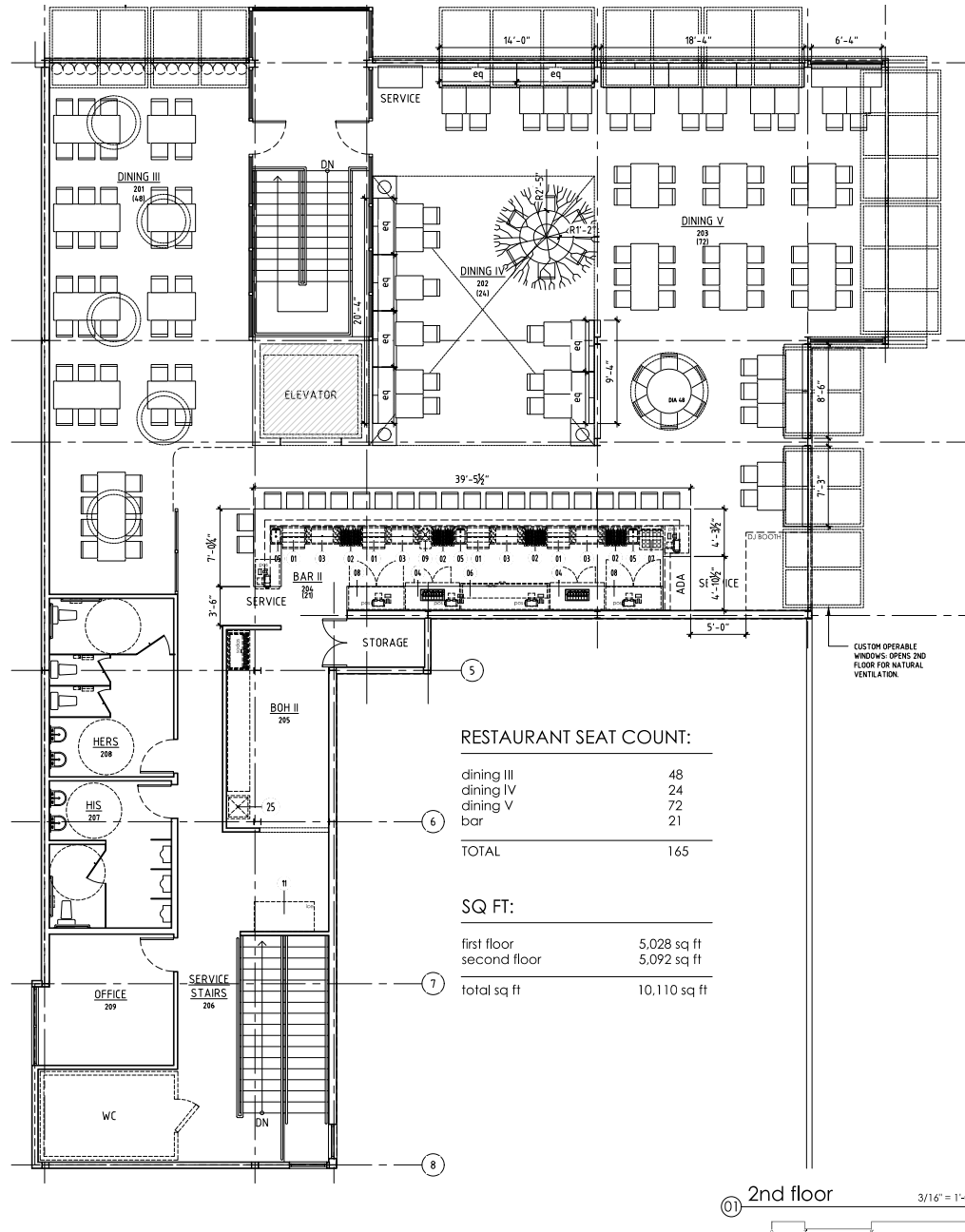
STIRR 2.0
5100 Belt Line Rd. #540
Addison, Texas 75254

TOWN PROJECT NUMBER PROJECT NUMBER
1798-SUP 18034

REVISIONS

ISSUE DATE
05.01.2019
SUP EXHIBITS

FLOOR PLAN - 1st-SUP
ID2.3 - 1st



ACTION	
APPROVED	DENIED
STAFF	Date Initial
COUNCIL	Date Initial

See the Staff Approval in Council Book Item for any conditions associated with the approval of this project.

PROJECT TEAM:

OWNER:
 Milwaukee Concepts
 2803 Main Street
 Suite 110, Dallas, TX 75226
 T 214 983 1222

DESIGN TEAM / ARCHITECTURE:
 Coeval Studio
 154 Leslie St.
 Dallas, Texas 75207
 214.531.4097 - Office

MEP ENGINEER:
 SCHMIDT & STACY Consulting Engineers, Inc.
 2711 N Haskell Ave.
 Dallas, TX 75204
 214.874.0200 - Office
 214.824.1155 - Fax

STRUCTURAL ENGINEER:
 HENNESSEY Engineering, Inc.
 1417 W. Main, Suite 100
 Carrollton, Texas 75006
 972.245.9478 - Office

PROPERTY OWNER:
 Village On The Parkway
 5100 Beltline Road, Suite 430
 Dallas, Texas 75254
 972.265.6064 - Office
 Contact: Susan Swedhammer, csm



These drawings and copies are the copyrighted property of Coeval Studio. They may not be used for projects other than the designed project without the specific written approval of Coeval Studio.

COEVAL

www.coevalstudio.com
 info@coevalstudio.com
 copyright © all rights reserved 2018

STIRR 2.0
 5100 Belt Line Rd. #540
 Addison, Texas 75254

TOWN PROJECT NUMBER PROJECT NUMBER
 1798-SUP 18034

REVIEWS

ISSUE DATE
 05.01.2019
SUP EXHIBITS

FLOOR PLAN - 2nd - SUP
ID2.3 - 2nd

FACADE PLAN NOTES

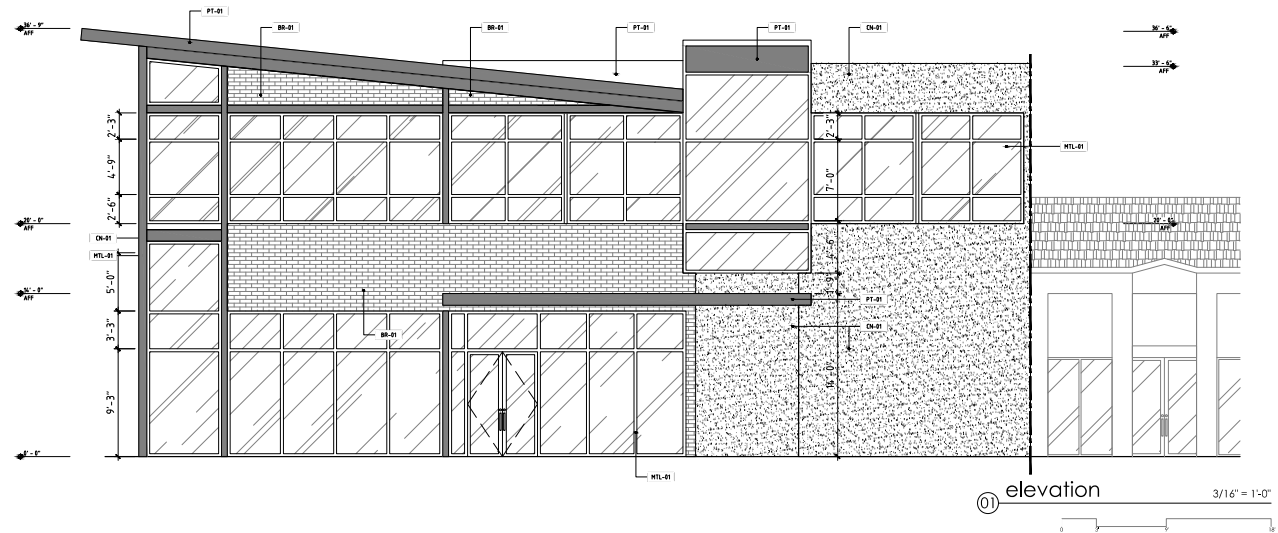
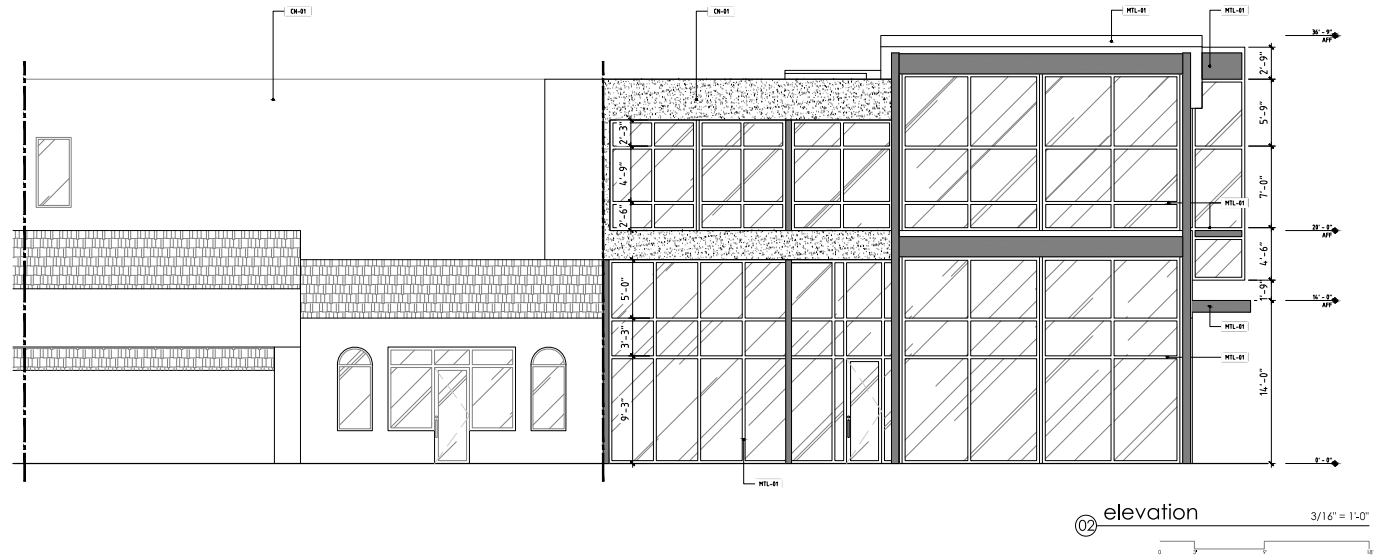
- THIS FACADE PLAN IS FOR CONCEPTUAL PURPOSES ONLY. ALL BUILDING PLANS REQUIRE REVIEW AND APPROVAL BY DEVELOPMENT SERVICES.
- ALL MECHANICAL UNITS SHALL BE SCREENED FROM PUBLIC VIEW AS REQUIRED BY THE ZONING ORDINANCE.
- WHEN PERMITTED, EXPOSED UTILITY BOXES AND CONDUITS SHALL BE PAINTED TO MATCH THE BUILDING.
- ALL SIGNAGE AREAS AND LOCATIONS ARE SUBJECT TO APPROVAL BY DEVELOPMENT SERVICES.
- ROOF ACCESS SHALL BE PROVIDED INTERNALLY, UNLESS OTHERWISE PERMITTED BY THE CHIEF BUILDING OFFICIAL.

ID3.0 - 2 ELEVATION MATERIAL PERCENTAGE:

CONCRETE STUCCO (CN - 01)	
PAINTED STUCCO (PT - 01)	
STUCCO TOTAL	29% (685 sq ft)
STOREFRONT (MLT-01)	
PAINTED METAL (PT-01)	
STOREFRONT TOTAL	71% (1,703 sq ft)
TOTAL SQ FT - 2,388 sq ft	

ID3.0 - 1 ELEVATION MATERIAL PERCENTAGE:

BRICK (BK - 01)	
MASONRY TOTAL	13% (341 sq ft)
CONCRETE STUCCO (CN - 01)	
PAINTED STUCCO (PT - 01)	
STUCCO TOTAL	24% (637 sq ft)
STOREFRONT (MLT-01)	
PAINTED METAL (PT-01)	
STOREFRONT TOTAL	63% (1,637 sq ft)
TOTAL SQ FT - 2,615 sq ft	



ACTION	
APPROVED	DENIED
STAFF	DATE
COUNCIL	DATE

See the Staff Approval in Council Resolution for any conditions associated with the approval of this project.

PROJECT TEAM:

OWNER
Milestone Concepts
2803 Main Street
Suite 110, Dallas, TX 75226
T 214.983.1222

DESIGN TEAM / ARCHITECTURE
Coeval Studio
154 Leslie St.
Dallas, Texas 75207
214.291.4097 - Office

MEP ENGINEER
SCHMIDT & STACY Consulting Engineers, Inc.
2711 N Haskell Ave.
Dallas, TX 75204
214.874.0200 - Office
214.824.1155 - Fax

STRUCTURAL ENGINEER
HENNESSEY Engineering, Inc.
1417 W. Main, Suite 100
Carrollton, Texas 75006
972.245.9478 - Office

PROPERTY OWNER
Village On The Parkway
5100 Beltline Road, Suite 430
Dallas, Texas 75254
972.385.6054 - Office
Contact: Susan Steelhammer, cm



These drawings and copies are the copyrighted property of Coeval Studio. They may not be used for projects other than the designed project without the specific written approval of Coeval Studio.

COEVAL

www.coevalstudio.com
info@coevalstudio.com
copyright © all rights reserved 2018

STIRR 2.0

5100 Belt Line Rd. #540
Addison, Texas 75254

TOWN PROJECT NUMBER PROJECT NUMBER
1798-SUP 18034

REVISIONS

ISSUE DATE
05.01.2019
SUP EXHIBITS

EXTERIOR ELEVATIONS - SUP
ID3.0