

# Town of Addison Infrastructure Asset Management Story

## Asset Management Project: Progress Update

March 6, 2018



# Order of Presentation

---

- Asset Management Objectives
- Project Approach
  - Data Collection Methodology
  - Asset Management Analytics
  - Level of Service Consideration in AMP
  - Asset Management Tool Demo
- Project Outcome / Deliverable
  - IRIS
  - Asset Management Plans
- Q&A

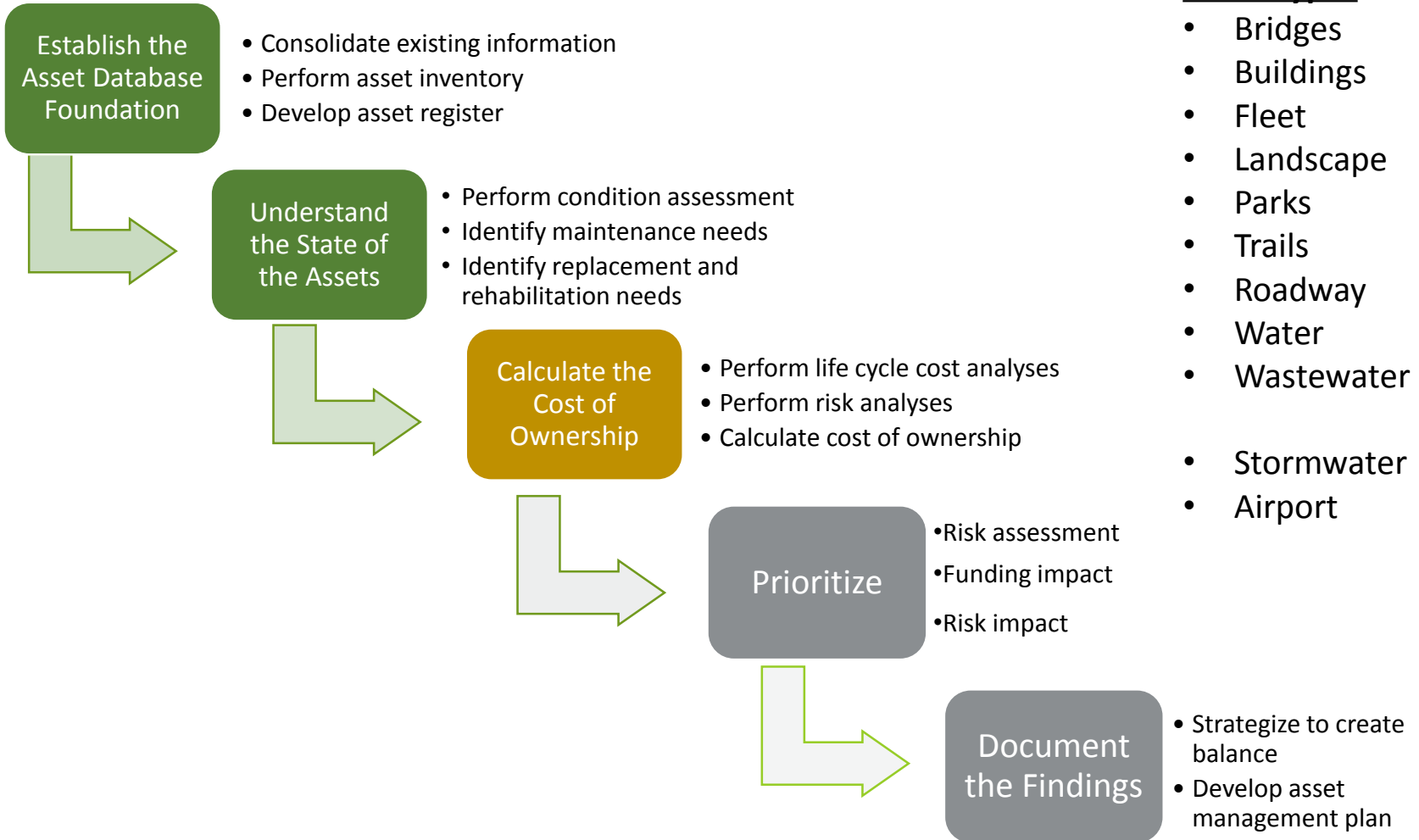
# Project Objectives

---

- Consolidate asset knowledge
- Develop an asset database foundation
- Understand current state and future asset needs
- Assess risk and prioritize needs based on risk
- Develop strategy to balance cost, service, and risk
- Transition from reactive to proactive state of practice
- Provide a logical, transparent, and defensible decision-making platform

***Tell a Good Asset Management Story!***

# Work Process



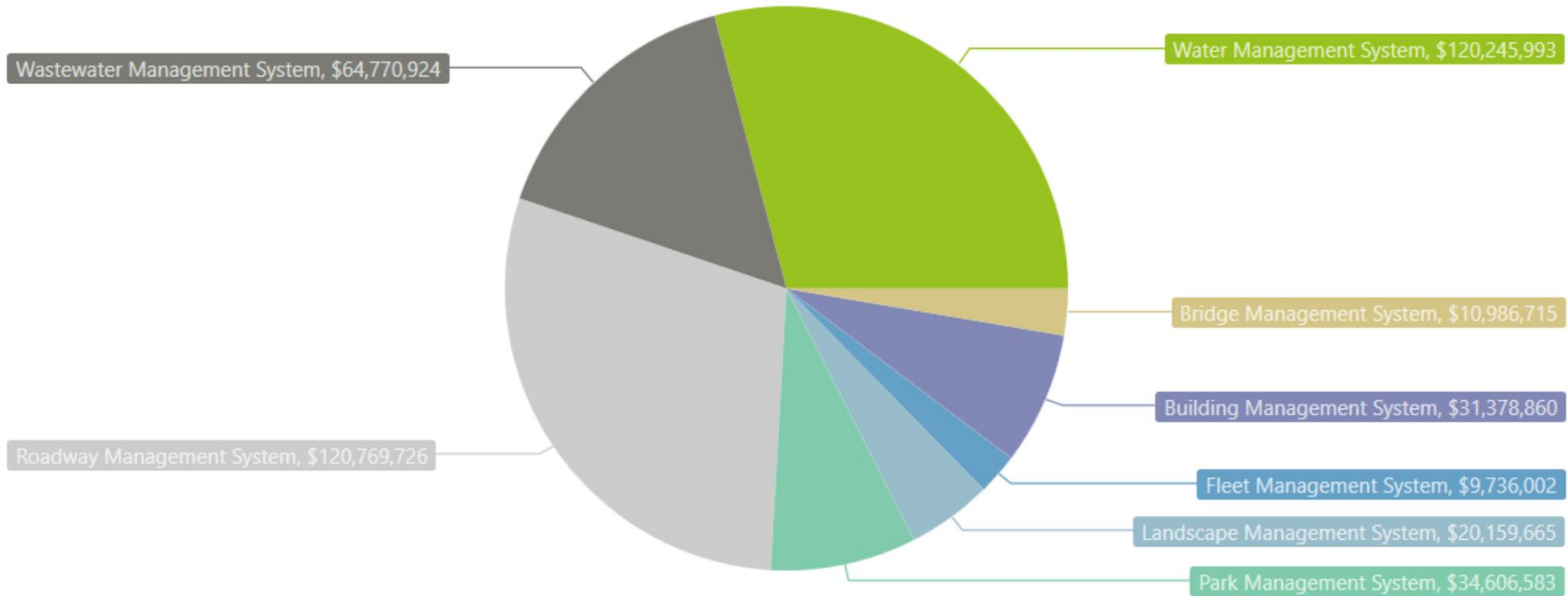
# Big Data is Coming!

---

- Building the asset data foundation
  - To date: 37,529 assets
    - Bridges – 419 assets
    - Buildings – 7,379 assets
    - Fleet – 182 assets
    - Landscape – 2,421 assets
    - Park – 3,993 assets
    - Roadway – 7,488 assets
    - Wastewater – 3,518 assets
    - Water – 12,129 assets
  - Next Phase
    - Storm drains
    - Airport
    - CMMS

# Summation of Replacement Costs

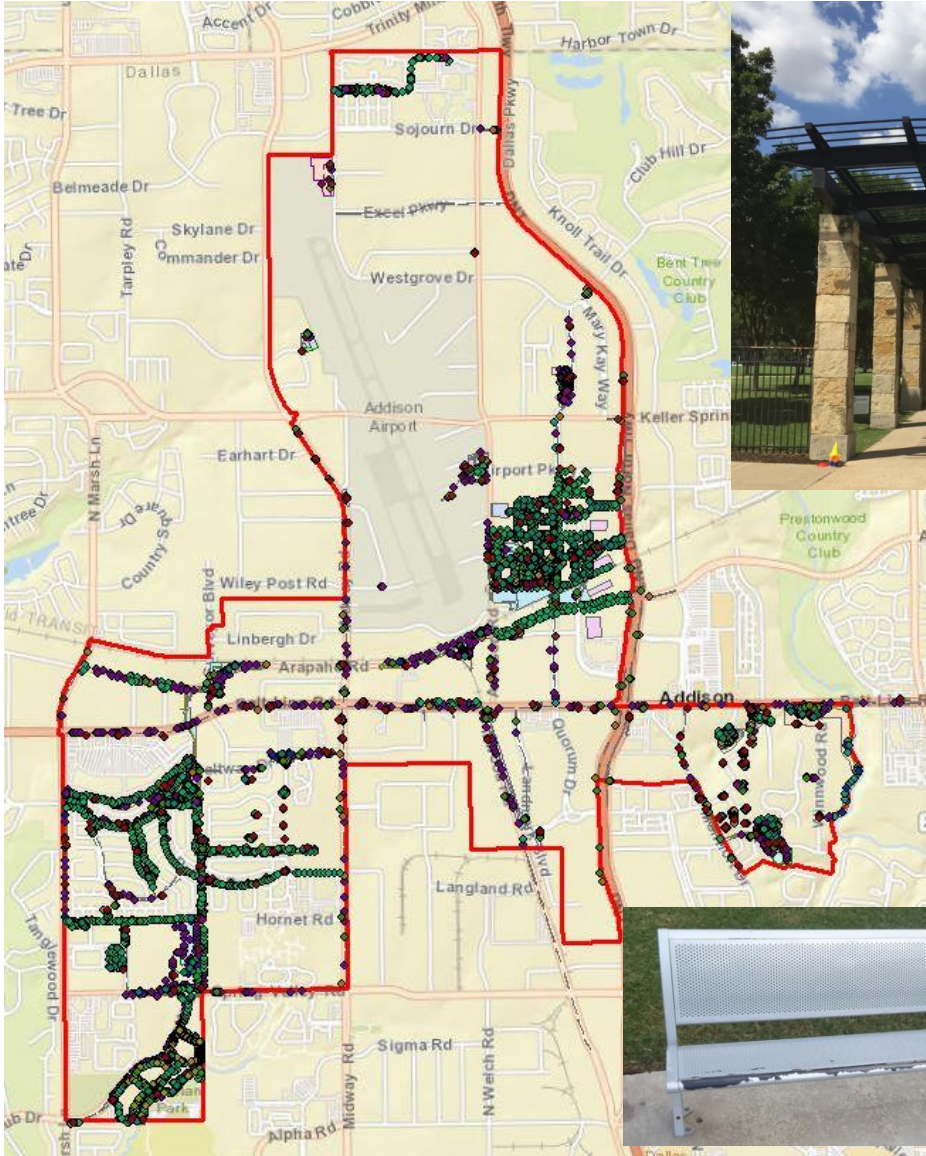
- 37,529 assets → ~\$450 million





# Park Assets

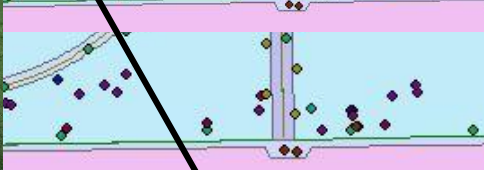
- 3,993 assets





# Addison Circle Park Assets

- 688 assets → \$5.5 million





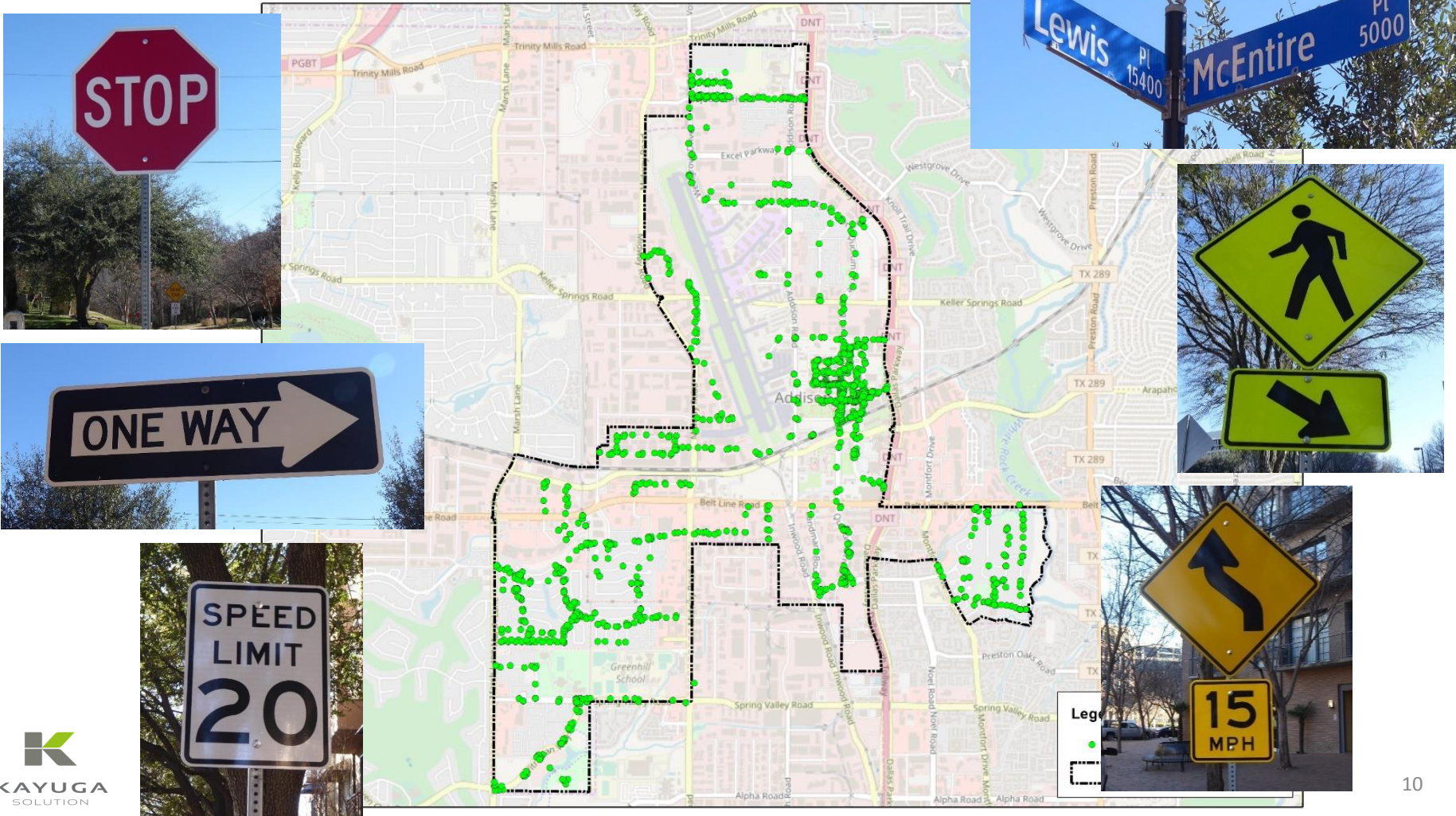
# Park Asset Inventory

- 3,993 park assets

Park	Assets	Park	Assets
Addison Circle	688	North Addison	144
Addison Town	109	Parkview	95
Arapaho	140	Quorum	197
Beckert	133	Redding Trail	565
Beltway Sam's	42	Redding Trail Dog Park	99
Blueprint	77	Spruill	168
Bosque	126	Vitruvian	553
Celestial	161	White Rock Creek Trail	100
Community Garden	85	Winnwood	100
Les Lac Linear	411		

# Signage

- To date: 1,763 signs



# Celestial Pump Station Pump Assembly



Suction Isolation Valve (In Vault)



Pump #3



Motor #3



Vibration Switch



Discharge Air Release Valve



Discharge Air Release Isolation Valve



Discharge Air Release Check Valve



Motorized Discharge Isolation Valve



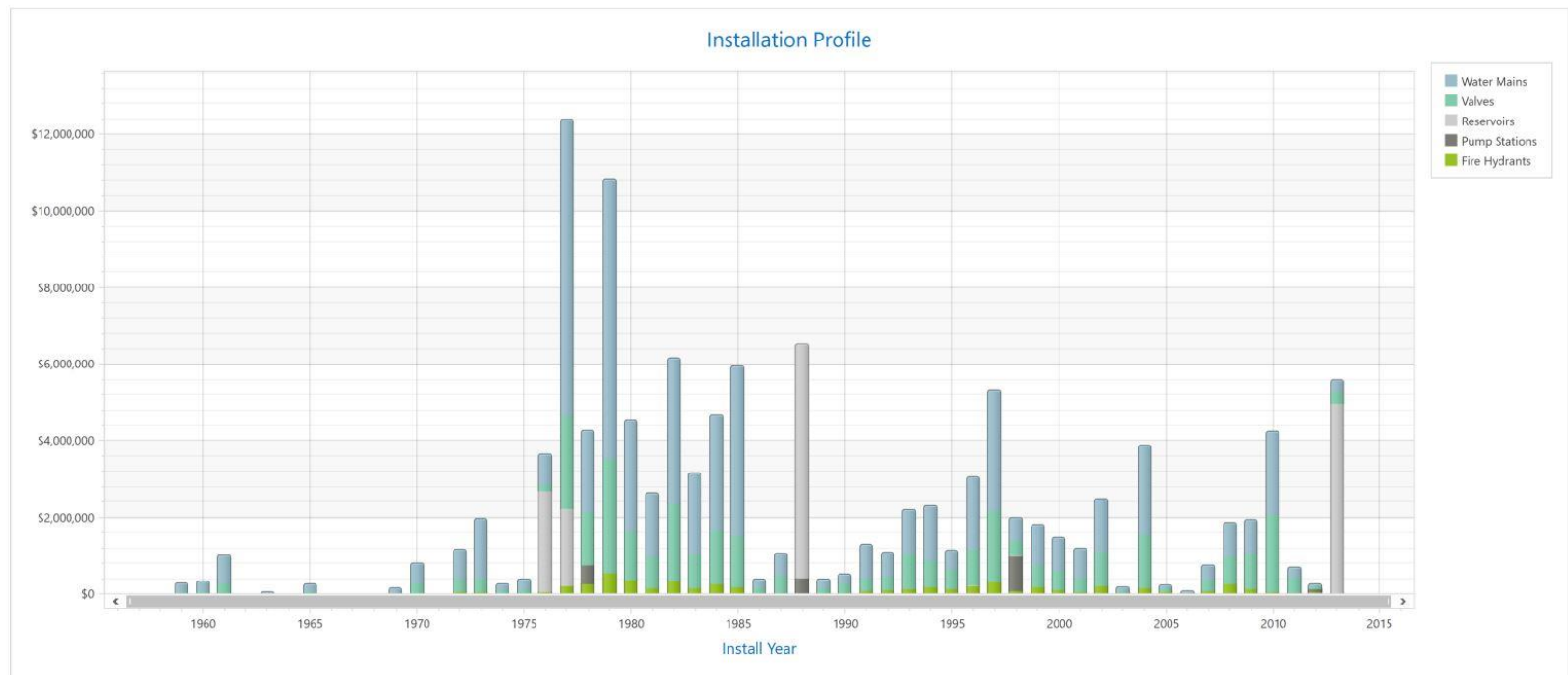
Motorized Discharge Isolation Valve Actuator



# But Assets are Aging

- We have assets that are over 50 years old
- We have assets in that are in need of replacement

Water Management System

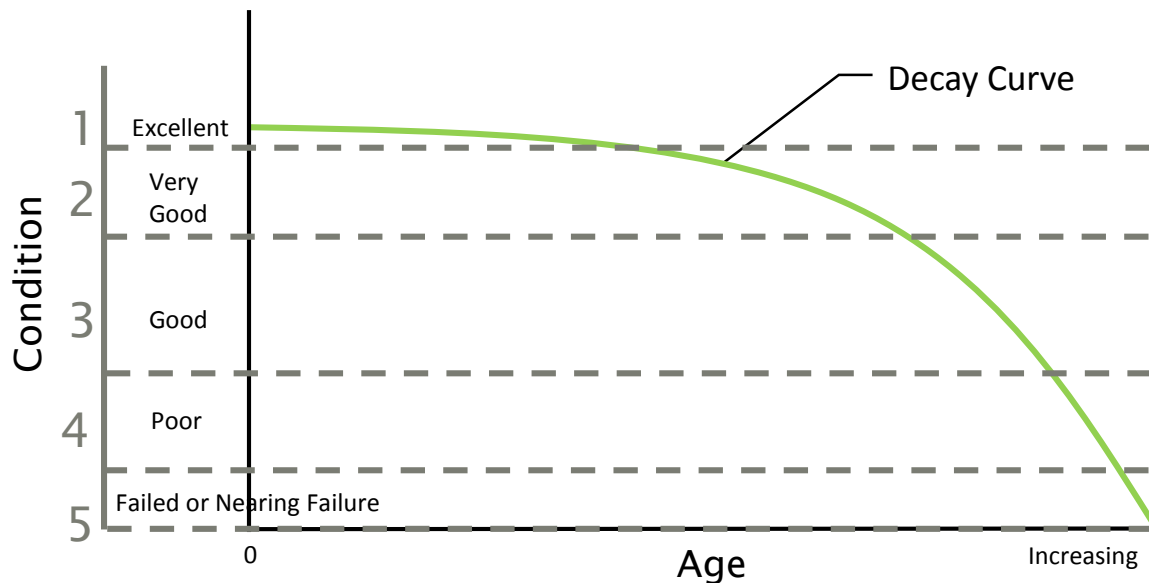




# Using Condition as Indicator for Replacement Timing



Scale	Description
1	New or nearly new condition
2	Very good condition or better than expected
3	Good or as expected condition
4	Poor or recommended replacement within 2 years
5	Failed or nearing failure, need immediate attention



# Signs in Poor Condition



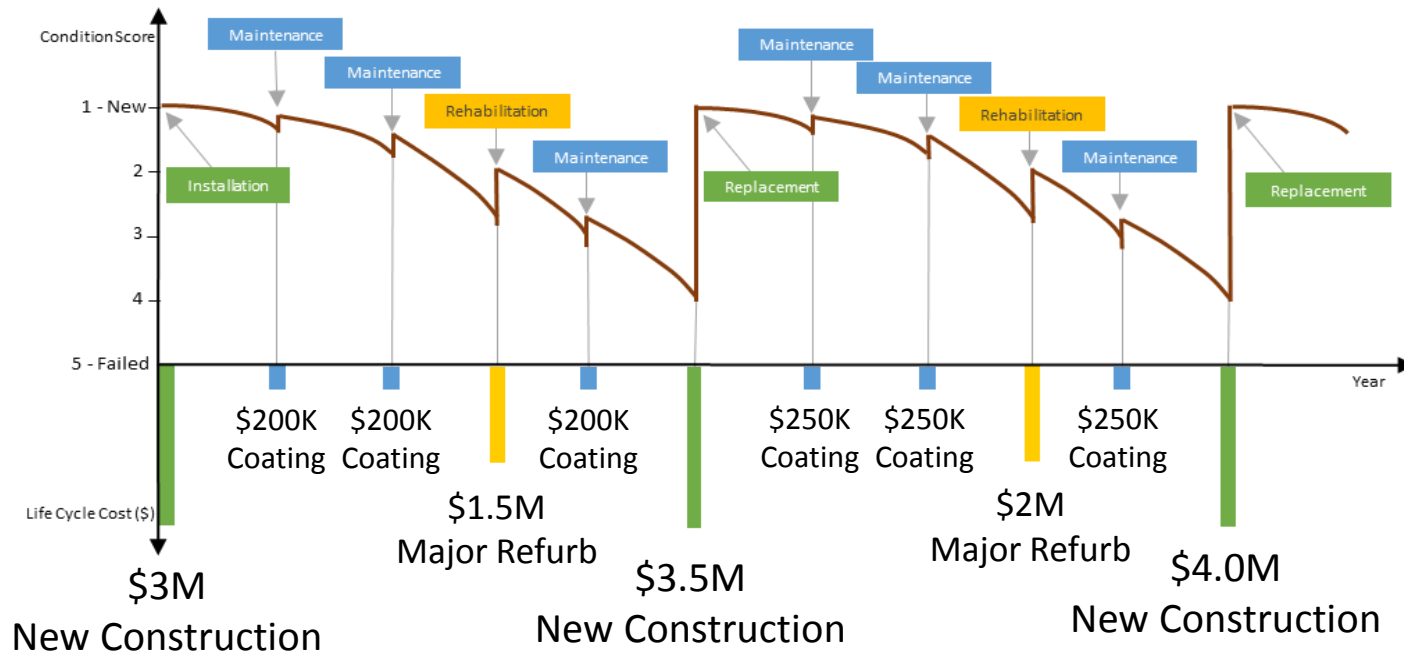


# Poor Condition Assets - Buildings



# Calculating the Cost of Ownership

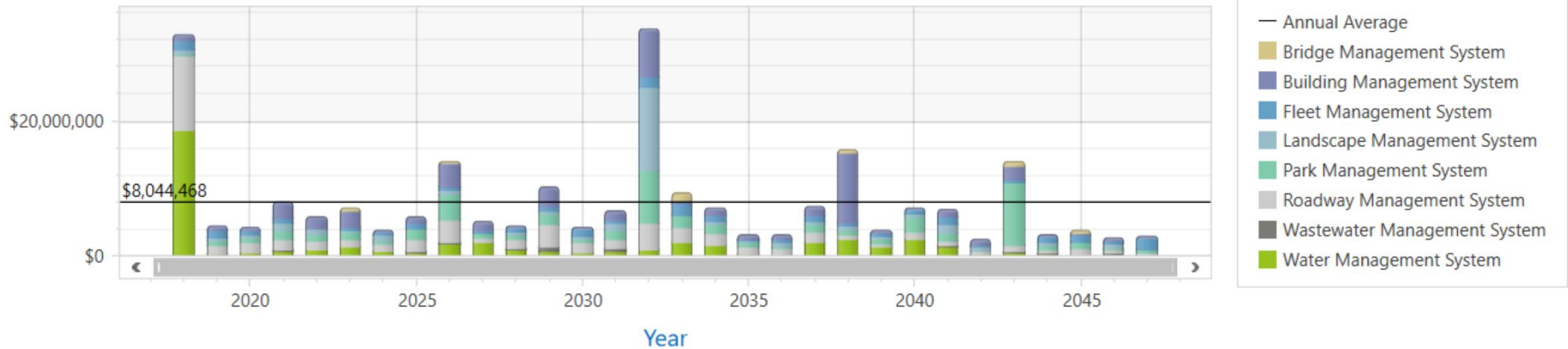
- Water Tower Life Cycle Cost Example



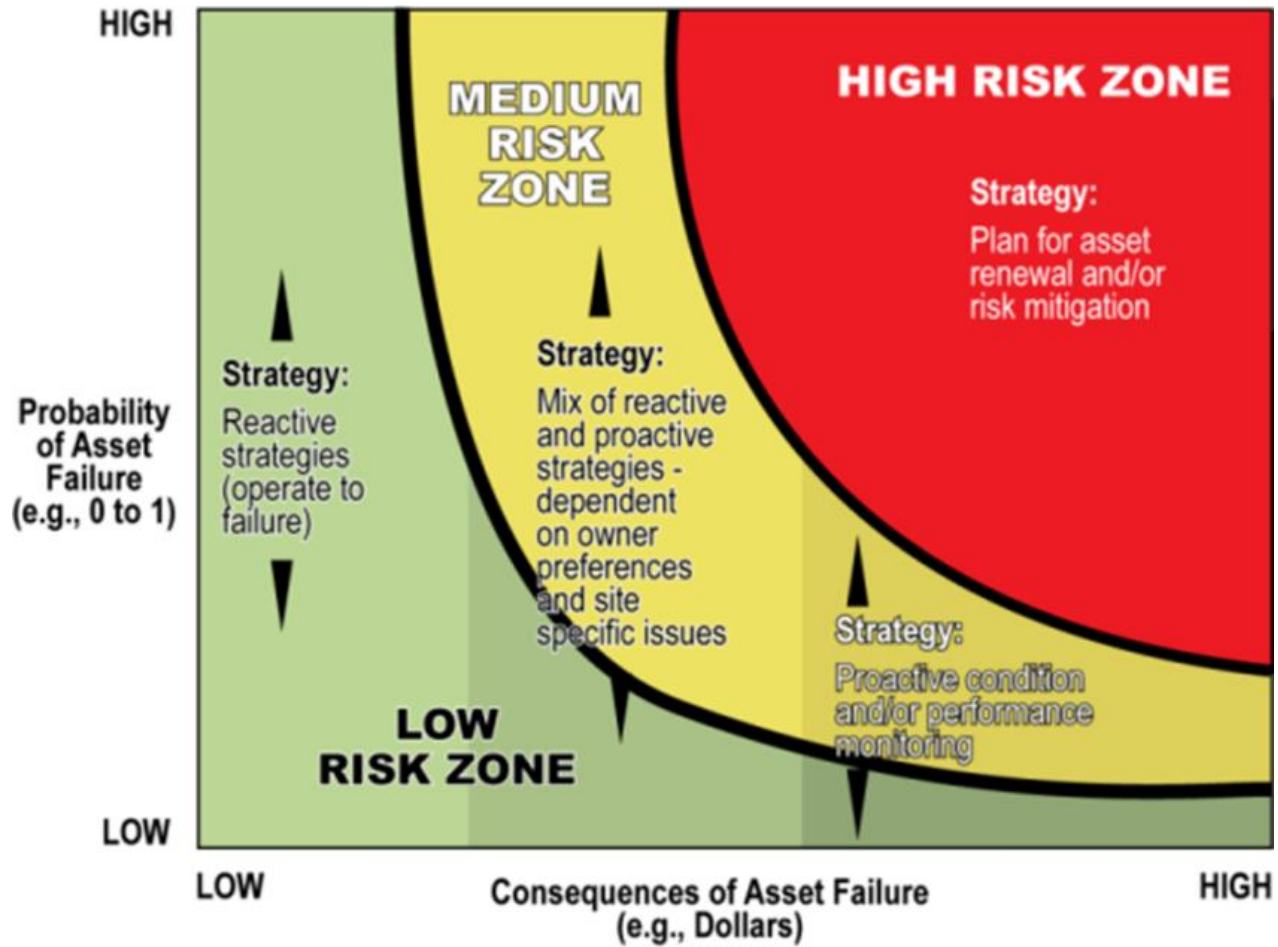


# Future Needs

## Replacement & Rehabilitation (R&R)



# Use the Concept of Risk to Prioritize



# Park/Trail Criticality

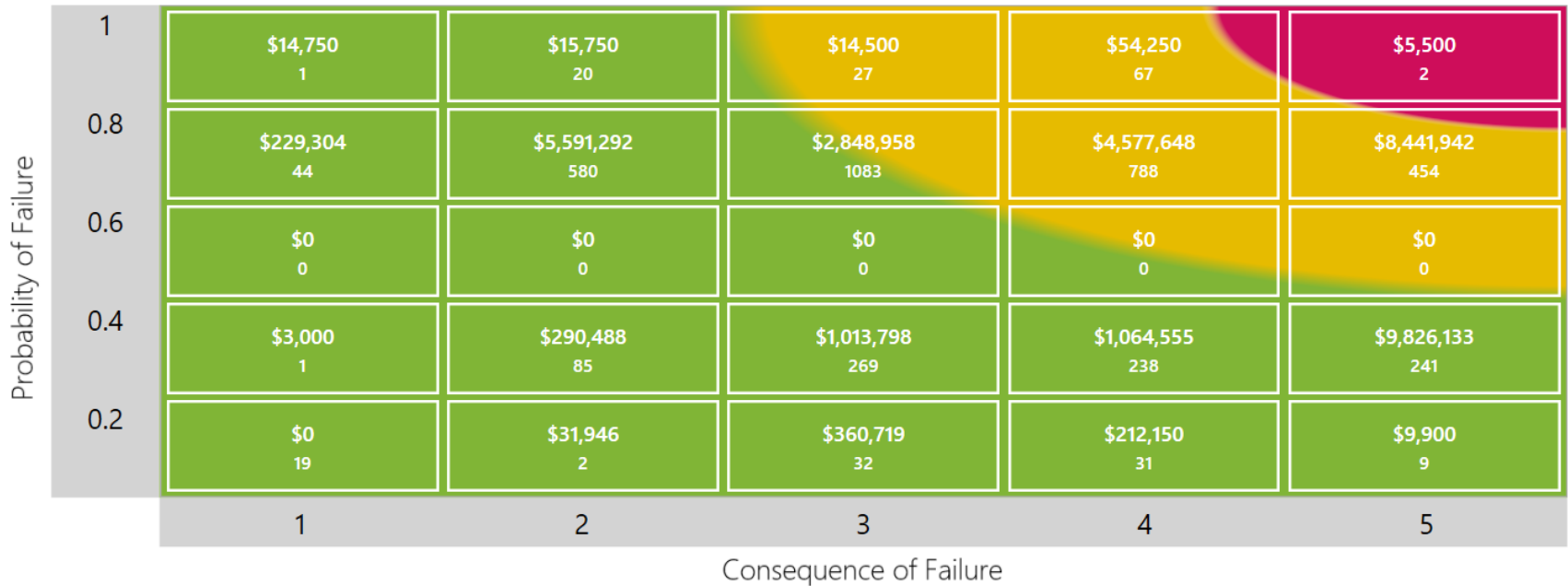
Park Name	Usage
Addison Circle Park	High
Spruill Park	High
Vitruvian Park	High
Beckert Park	High
Blueprints at Addison Circle	High
Bosque Park	Medium
Celestial Park	Medium
Les Lacs Linear Park	Medium
Parkview Park	Medium
Quorum Park	Medium
Winnwood Park	Medium
Redding Trail	Medium
Addison Town Park	Low
Arapaho Park	Low
North Addison Park	Low
Beltway Sam's Park	Low
Community Garden	Low
Redding Trail Dog Park	Low
White Rock Creek Trail	Low

# Asset Level Criticality

Criticality – 5	Criticality - 4	Criticality - 3	Criticality - 2	Criticality - 1
Critical				Non-Essential
<ul style="list-style-type: none"><li>• Play Structure</li><li>• Playground Surfacing</li><li>• Walkway</li><li>• Handrail</li><li>• Etc.</li></ul>	<ul style="list-style-type: none"><li>• Irrigation Controller</li><li>• Shelters</li><li>• Stairways</li><li>• Lighting</li><li>• Etc.</li></ul>	<ul style="list-style-type: none"><li>• Bench</li><li>• Drinking Fountain</li><li>• Picnic Table</li><li>• Etc.</li></ul>	<ul style="list-style-type: none"><li>• Fencing</li><li>• Bike Rack</li><li>• Trash Bin</li><li>• Etc.</li></ul>	<ul style="list-style-type: none"><li>• Information Board</li><li>• Etc.</li></ul>

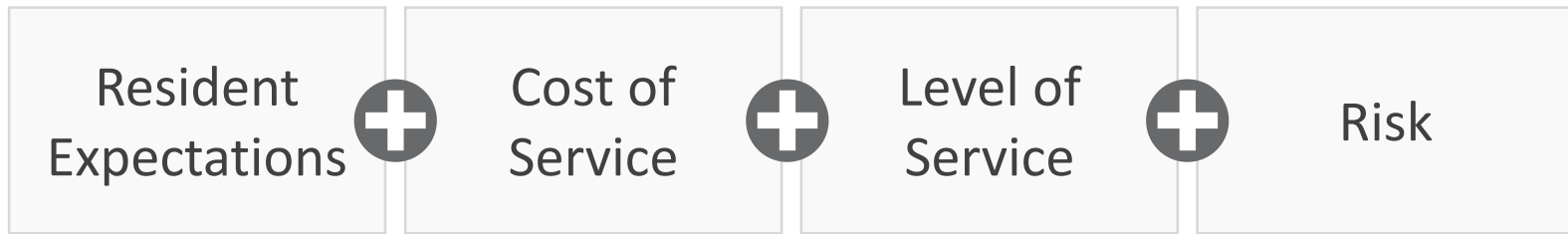


# Park Management System Risk Profile

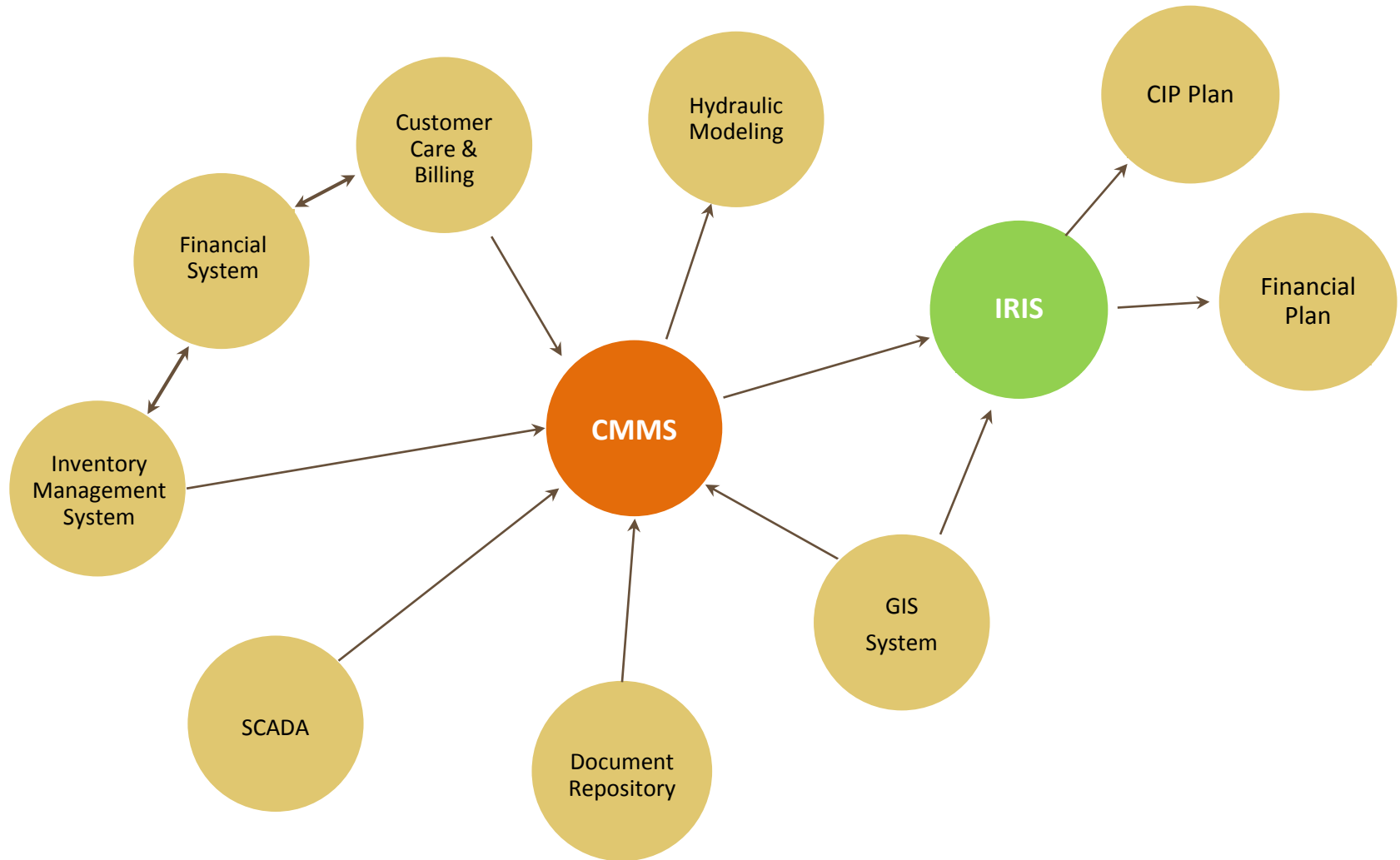


# Level of Service vs. Asset Management Plan

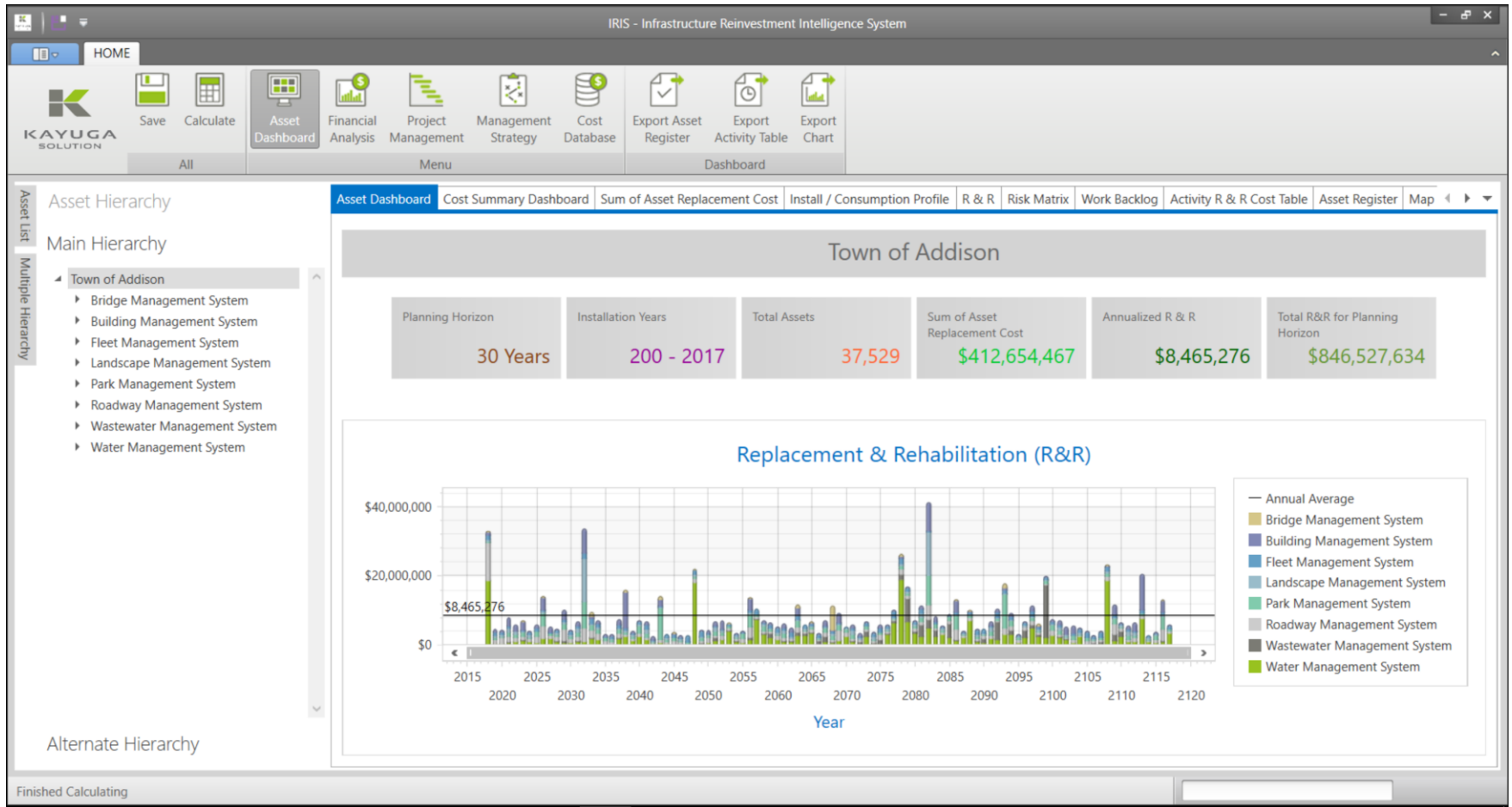
- Achieving balance



# Asset Management Information System



# IRIS Demonstration





**Thank you!**