

TOWN OF ADDISON, TEXAS

ORDINANCE NO. _____

AN ORDINANCE OF THE TOWN OF ADDISON, TEXAS, PROVIDING FOR APPROVAL OF A DEVELOPMENT PLAN FOR A TOWNHOME DEVELOPMENT IN A PLANNED DEVELOPMENT ZONING DISTRICT (016-003) LOCATED ON 17.4 ACRES LOACTED 4150 BELT LINE ROAD, PROVIDING FOR APPROVAL OF A WAIVER TO DEVELOPMENT STANDARDS; PROVIDING A SAVINGS CLAUSE; PROVIDING A SEVERABILITY CLAUSE; PROVIDING FOR A PENALTY OF A FINE NOT TO EXCEED THE SUM OF TWO THOUSAND DOLLARS (\$2,000) FOR EACH OFFENSE; PROVIDING AN EFFECTIVE DATE.

WHEREAS, the Town of Addison, Texas (the “City”) is a home rule municipality having full power of local self-government pursuant to Article 11, Section 5 of the Texas Constitution and its Home Rule Charter; and

WHEREAS, the area generally known as Addison Grove was zoned PD, Planned Development, with development standards and a concept plan governing the entire property through Ordinance O16-003; and

WHEREAS, the PD requires development plan approval prior to the issuance of a building permit; and

WHEREAS, after due deliberations and consideration of the recommendation of the Planning and Zoning Commission, the information received at the public hearing, and other relevant information and materials, the City Council of the Town of Addison, Texas finds that this ordinance promotes the general welfare and safety of this community.

NOW, THEREFORE, BE IT ORDAINED BY THE CITY COUNCIL OF THE TOWN OF ADDISON, TEXAS THAT:

Section 1. That the recitals and findings set forth above are hereby found to be true and correct and incorporated as if fully set forth herein.

Section 2. The property shall be improved in accordance with the development plans which are attached hereto as **Exhibit A** and made hereof for all purposes, subject to the following condition:

A. The fences shown on the site plan along the Beltway greenspace be revised to provide public access between the Townhomes.

Section 3. That any person, firm, or corporation violating any of the provisions or terms of this ordinance shall be subject to the same penalty as provided for in the Comprehensive Zoning Ordinance of the city, as heretofore amended, and upon conviction shall be punished by a fine set

in accordance with Chapter 1, General Provisions, Section 1.10, General penalty for violations of Code; continuing violations, of the Code of Ordinances for the Town of Addison.

Section 4. The provisions of this Ordinance are severable, and should any section, subsection, paragraph, sentence, phrase or word of this Ordinance, or application thereof to any person, firm, corporation or other business entity or any circumstance, be adjudged or held to be unconstitutional, illegal or invalid, the same shall not affect the validity of the remaining or other parts or portions of this Ordinance, and the City Council hereby declares that it would have passed such remaining parts or portions of this Ordinance despite such unconstitutionality, illegality, or invalidity, which remaining portions shall remain in full force and effect.

Section 5. That all ordinances of the City in conflict with the provisions of this ordinance be, and the same are hereby repealed and all other ordinances of the City not in conflict with the provisions of this ordinance shall remain in full force and effect.

Section 6. That this Ordinance shall become effective from and after its passage and approval and after publication as may be required by law or by the City Charter or ordinance.

PASSED AND APPROVED BY THE CITY COUNCIL OF THE TOWN OF ADDISON, TEXAS, on this the 24th day of May, 2016.

Todd Meier, Mayor

ATTEST:

Laura Bell, City Secretary

CASE NO: 1729-Z/Addison Grove

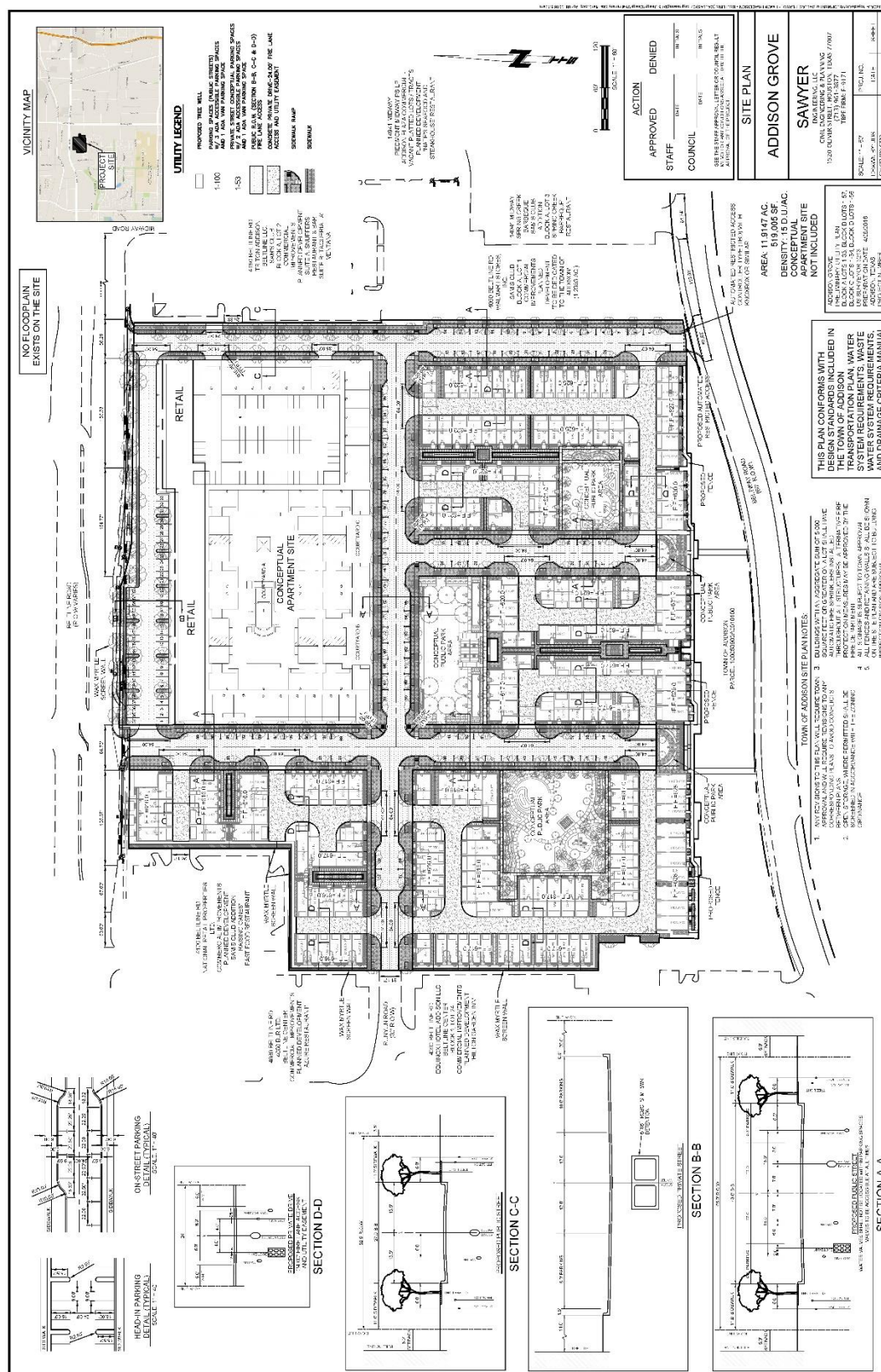
APPROVED AS TO FORM:

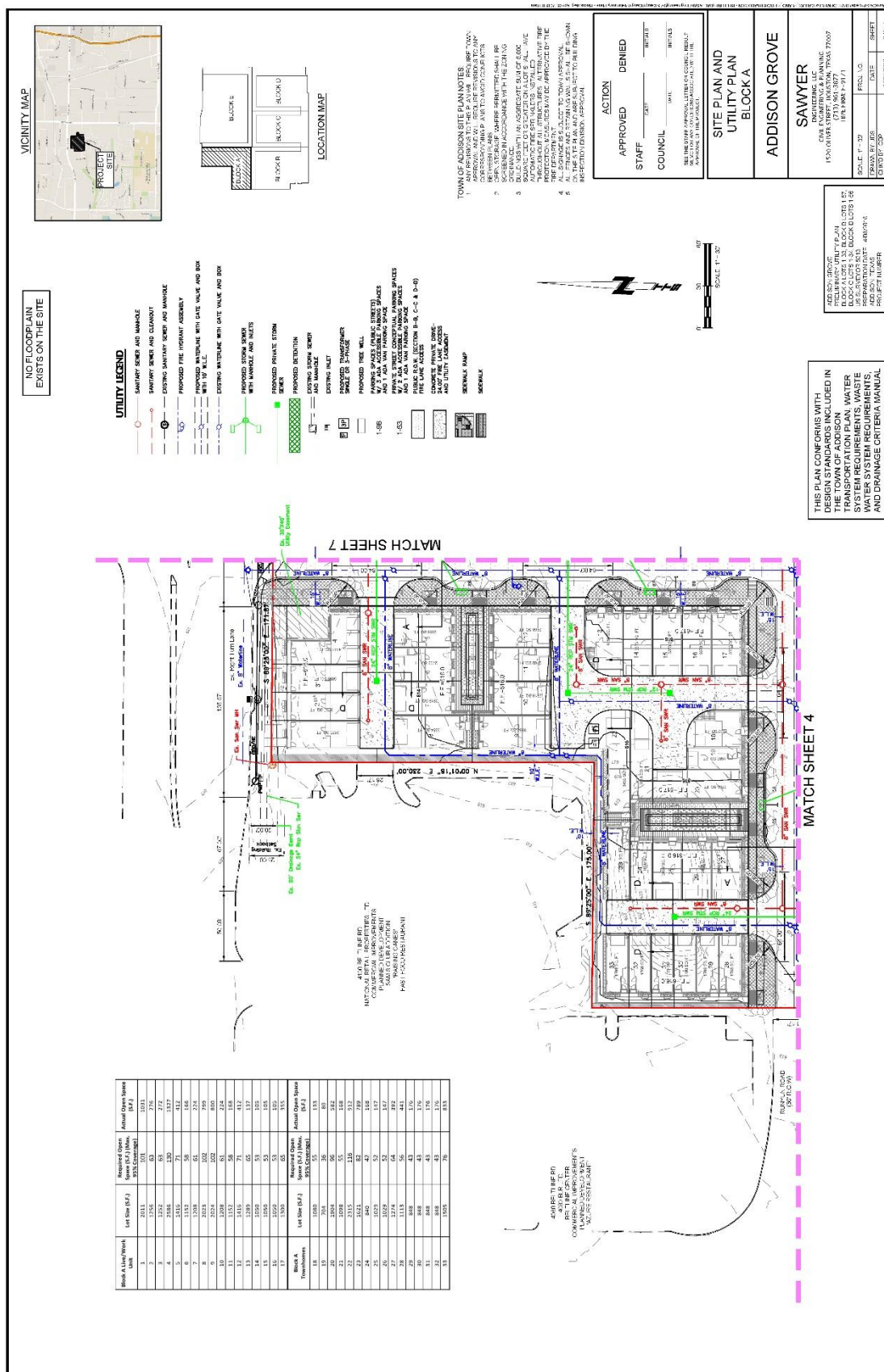
Brenda N. McDonald, City Attorney

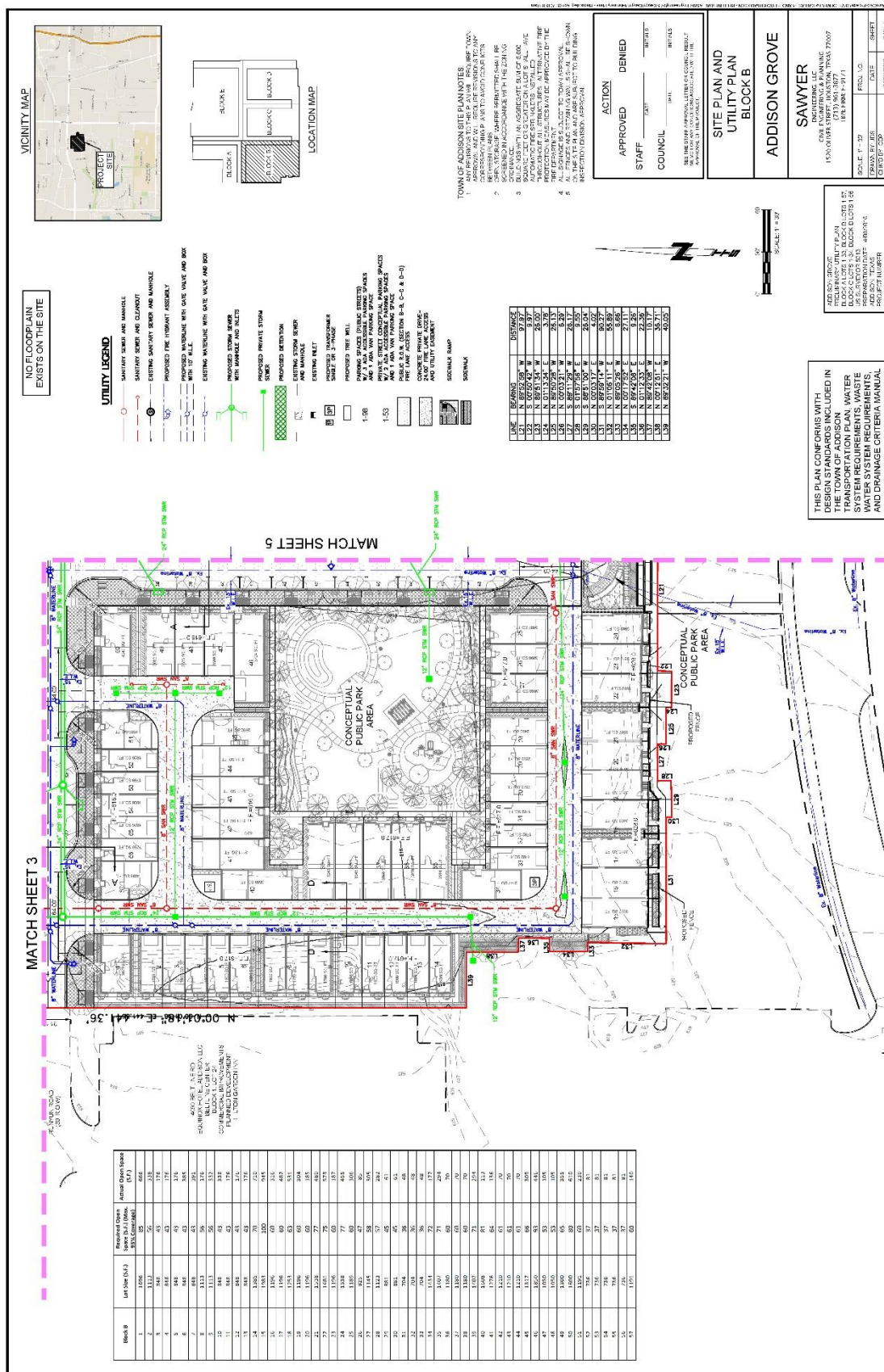
PUBLISHED ON: _____

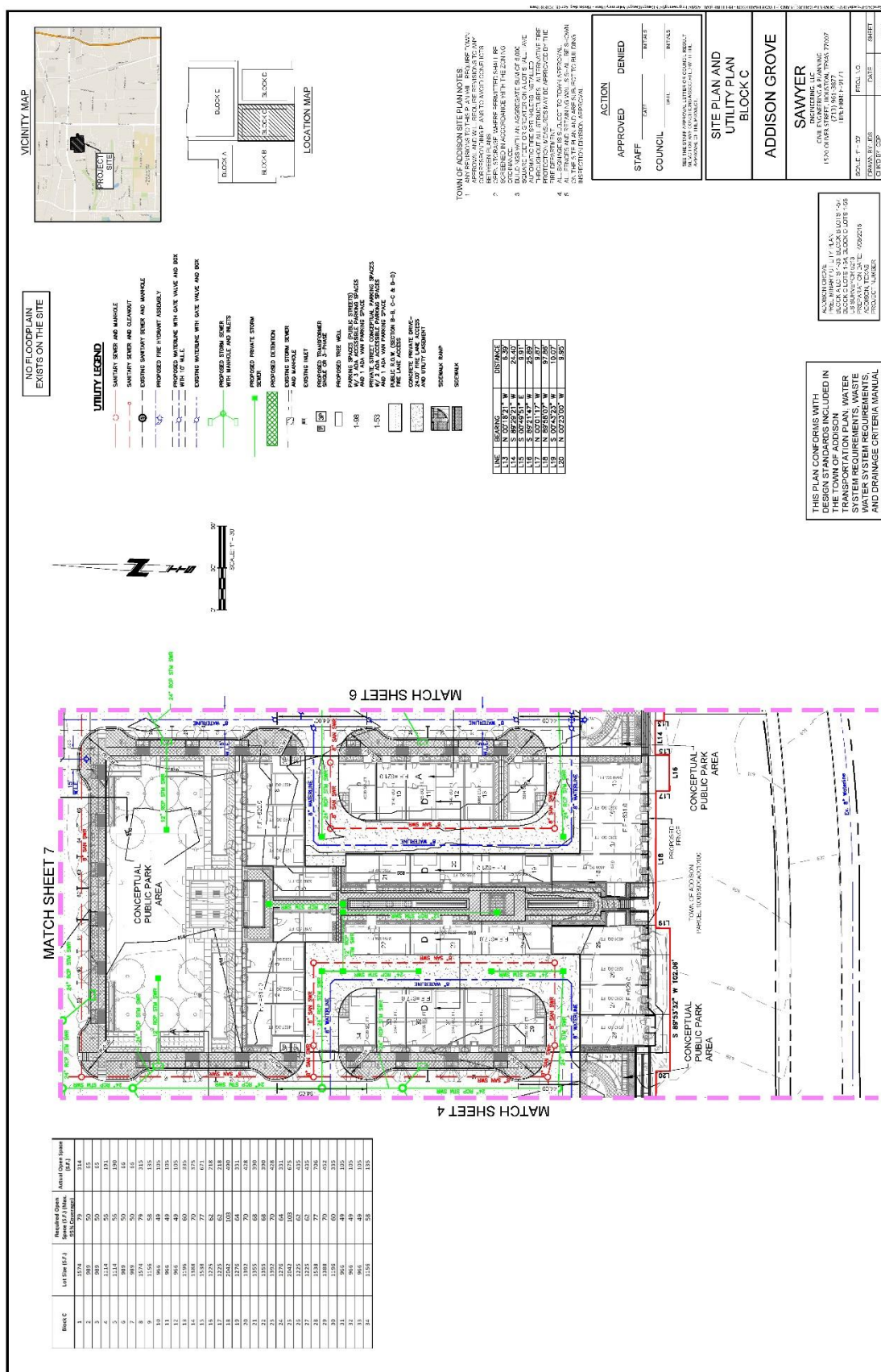
Ordinance No. _____

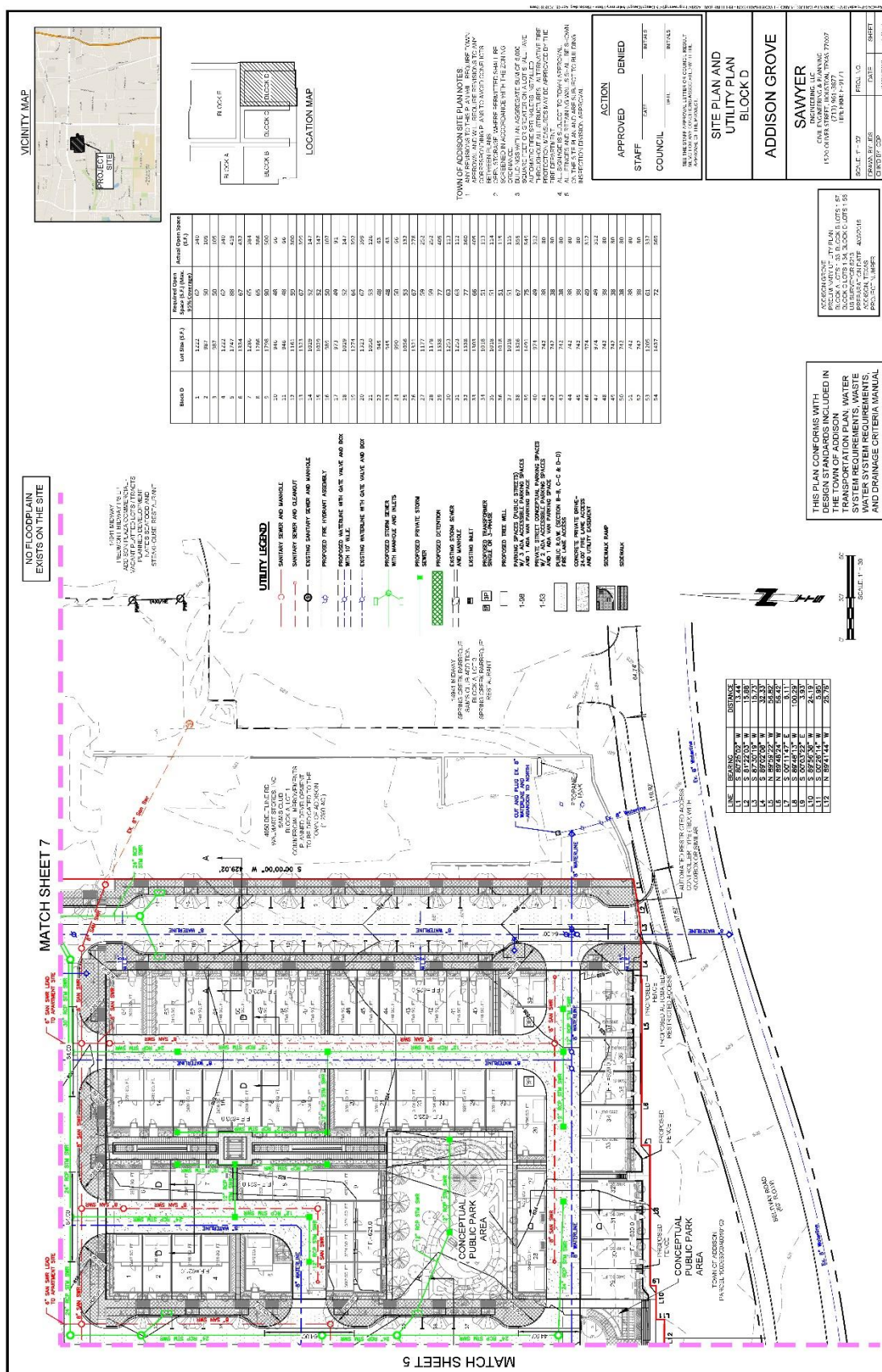
EXHIBIT A: DEVELOPMENT PLANS

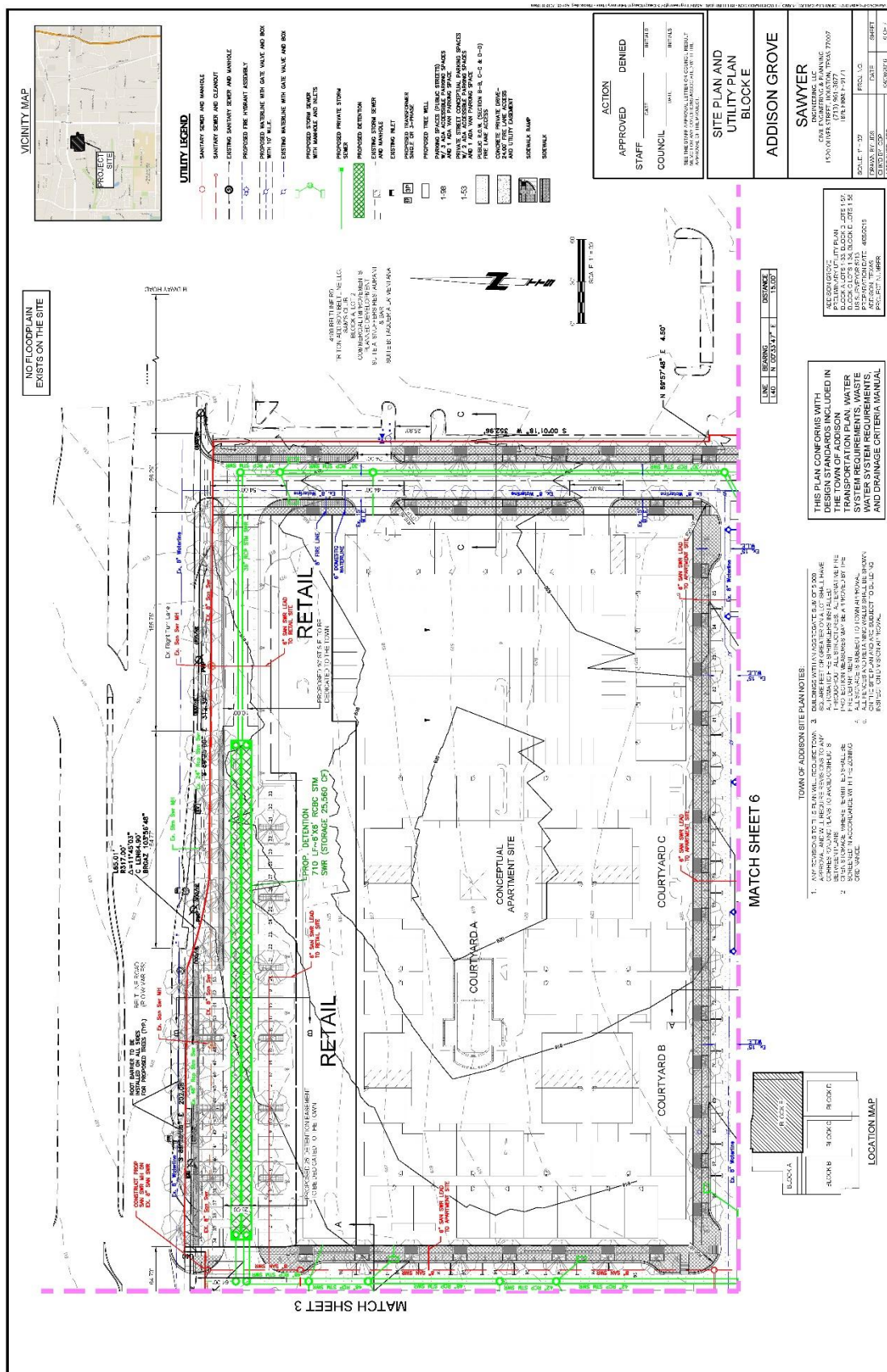


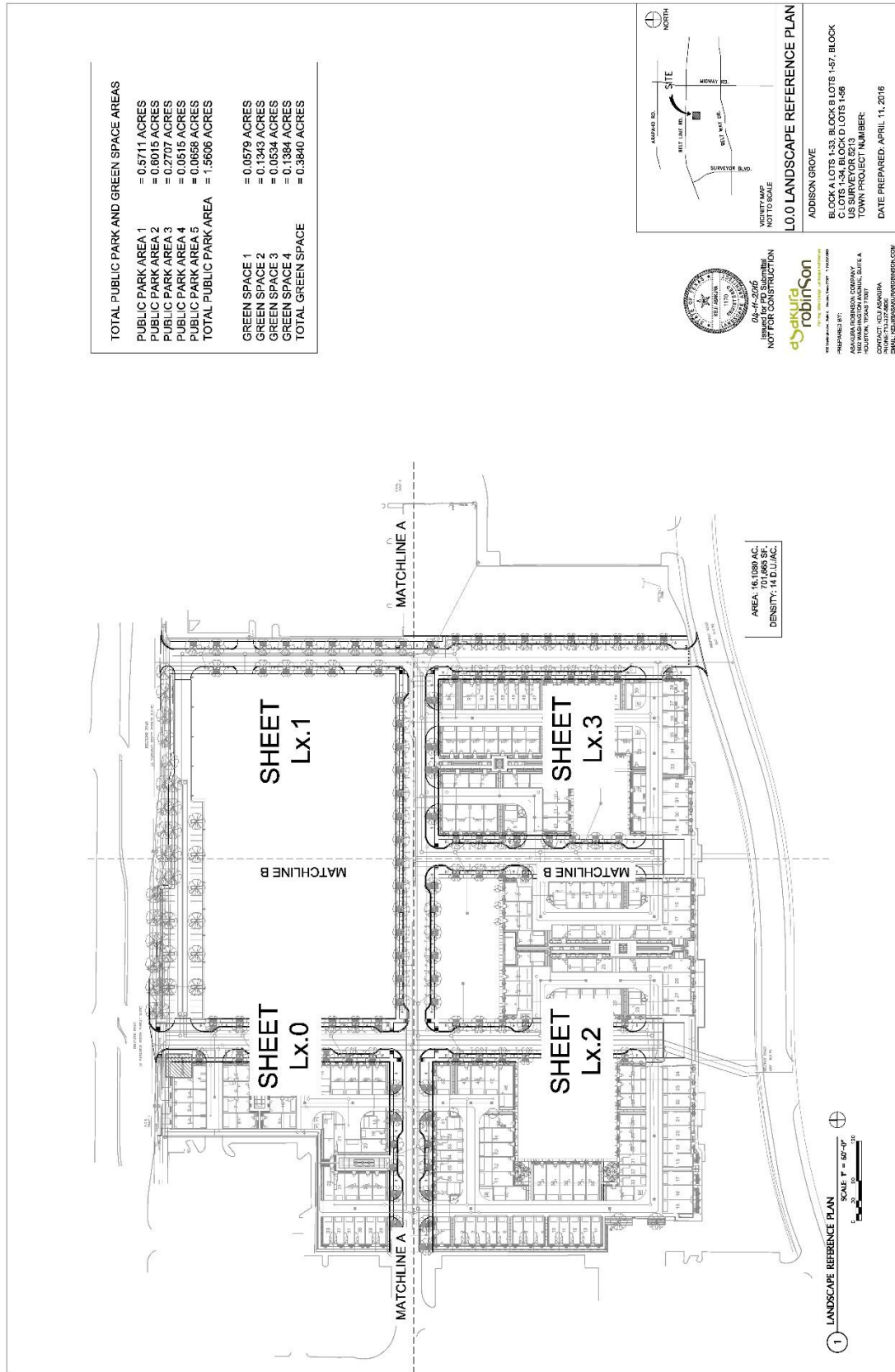


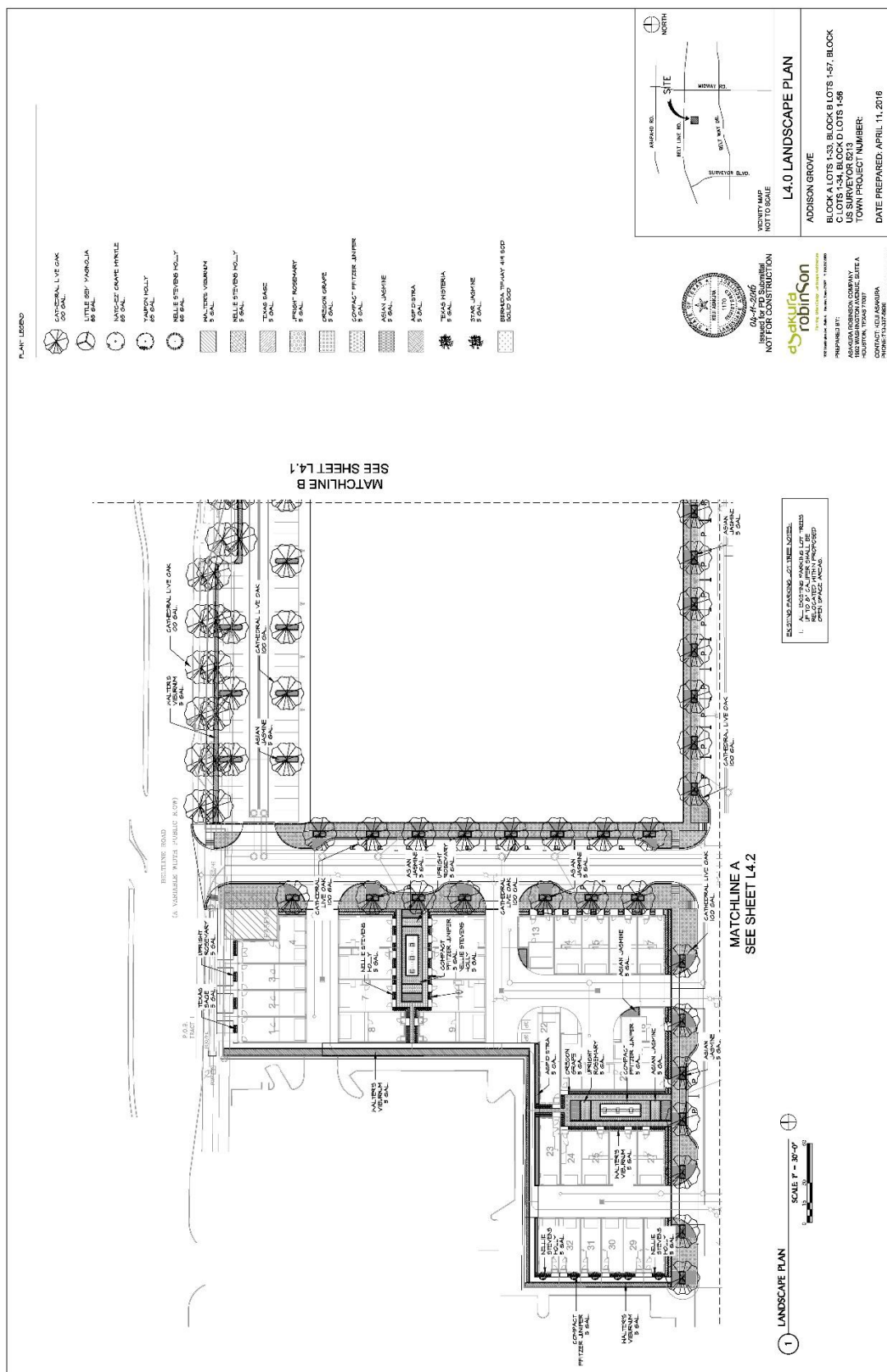


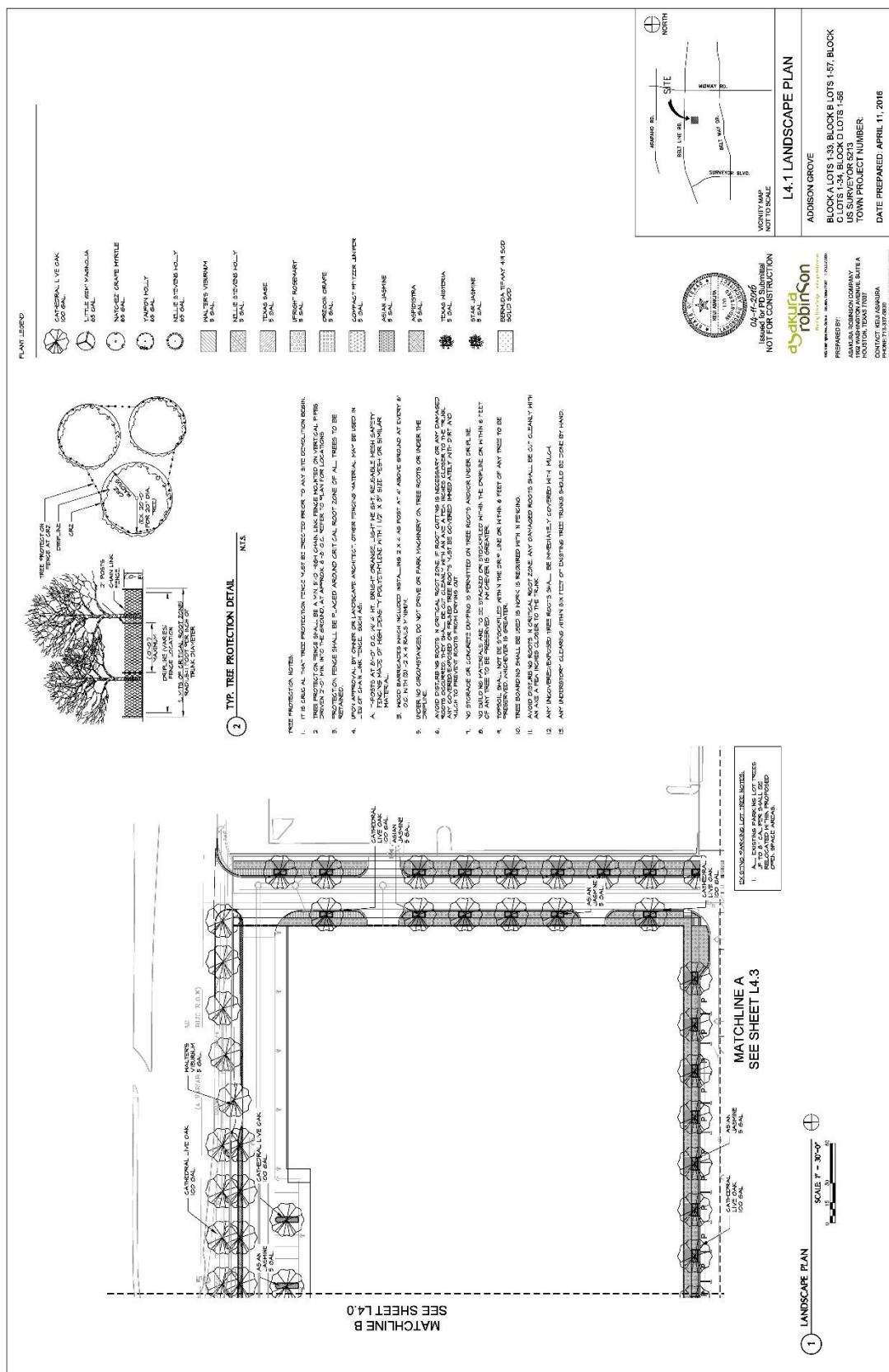


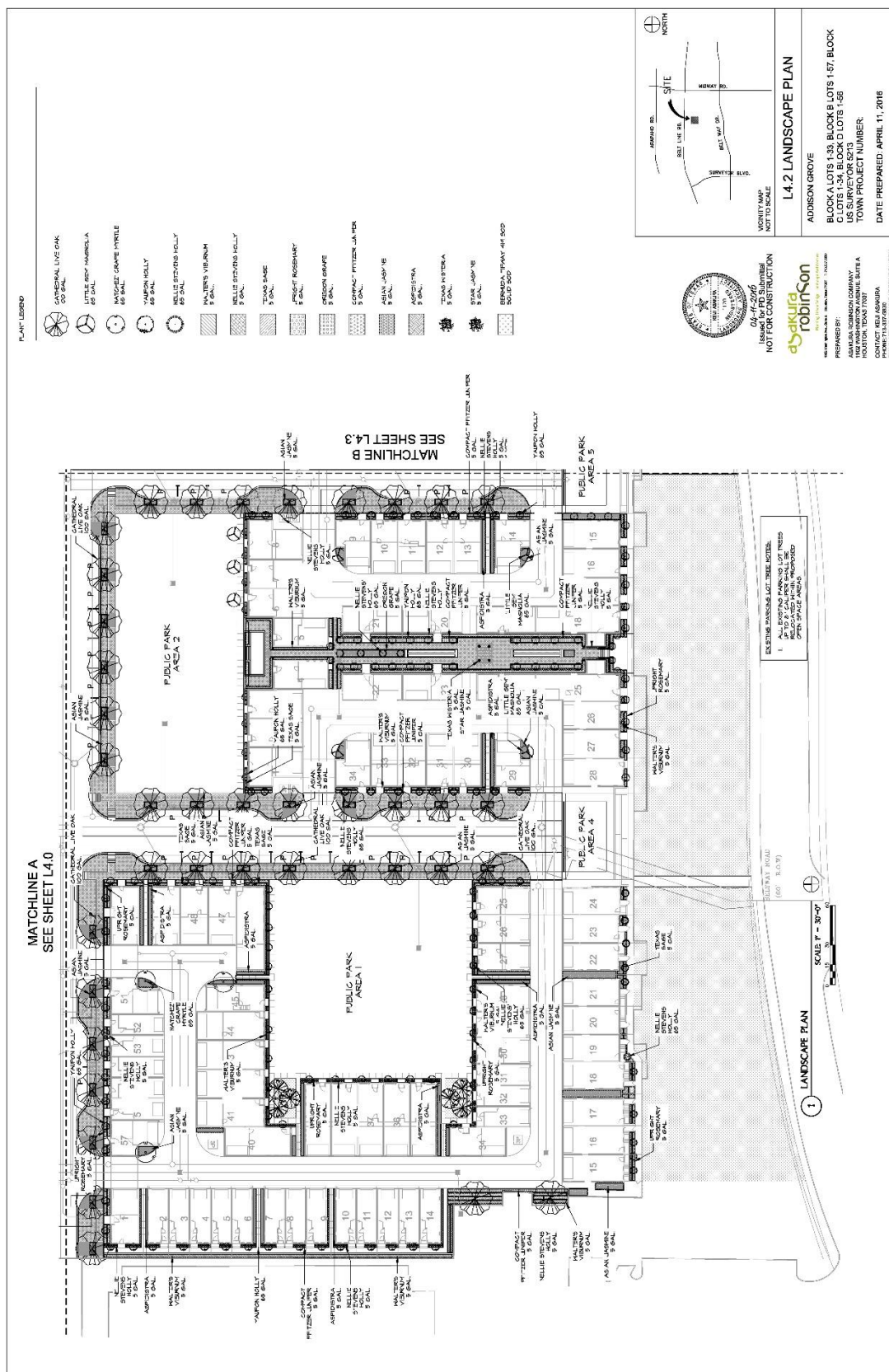


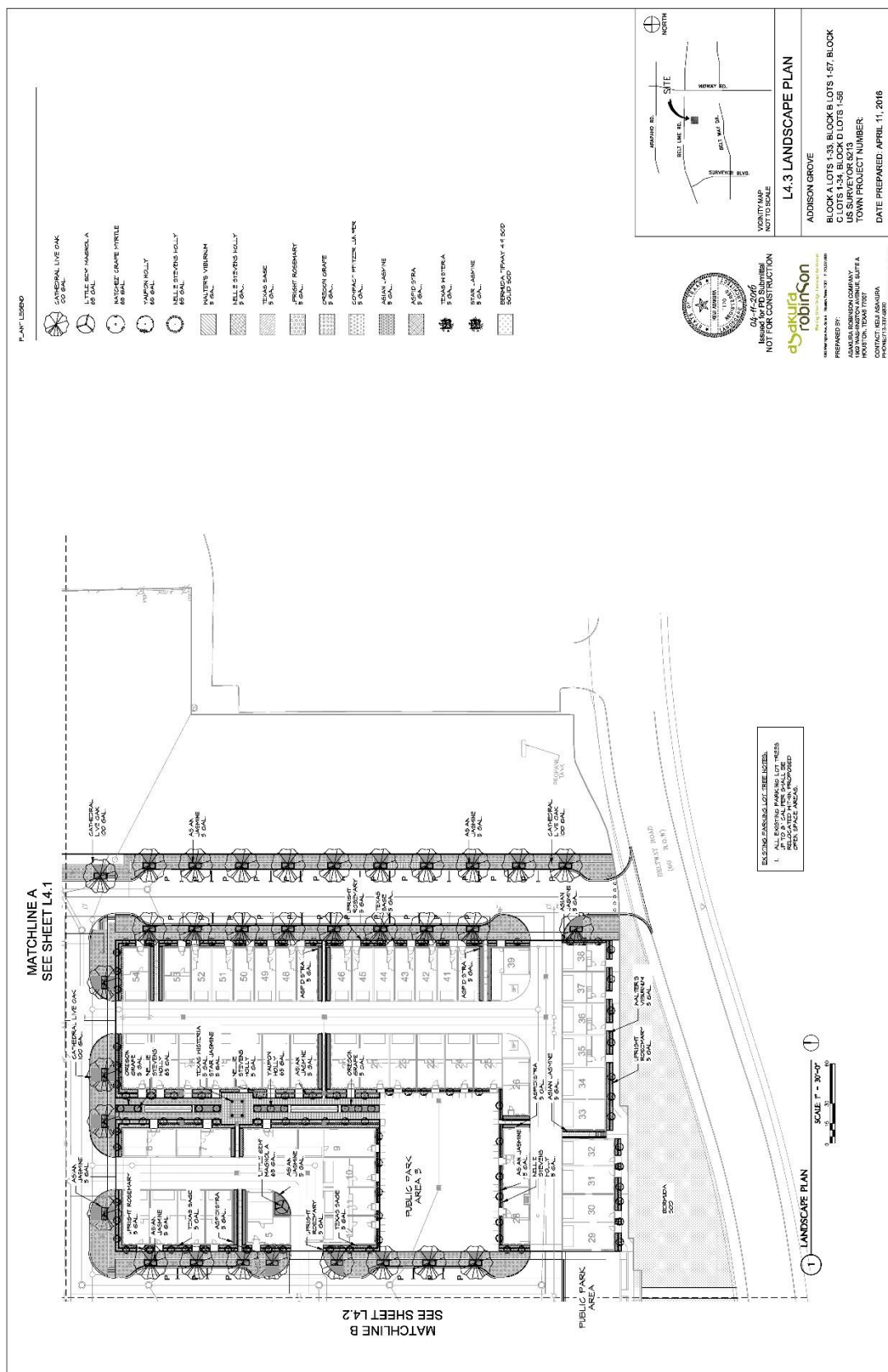


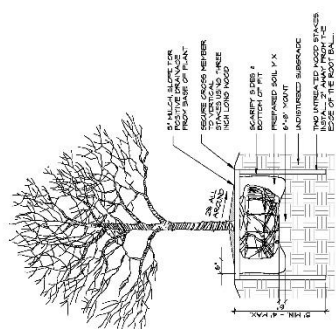




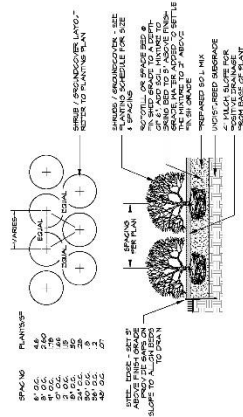




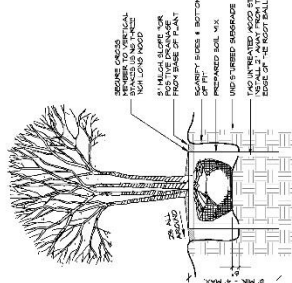




TYP. TREE PLANTING DETAIL



TYPE, SHRUB / GROUND COVER PLANTING
DETAIL & SPACING CHART



TYP. MULTI-TRUNKS TREE
PLANTING DETAIL.

PLANTING NOTES:

- [illegible]

LAKE SURVEILLANCE	CONVENT NAME	STANDARD NAME	SIZE	PERIM	AREA	COMMENTS
	CONVENT ST / CONVENT PARK, WEST					
	139	Convent Lake 100'	139	14.1'	0.1'	CONVENT GRASS, 100' dia, W. #1, 3346423
	140	Convent Lake 100'	140	14.1'	0.1'	CONVENT GRASS, 100' dia, W. #2, 3346424
	42	Marble Falls 100'	42	17.2'	0.4'	CONVENT GRASS, 100' dia, W. #1, 3346425
	43	Marble Falls 100'	43	17.2'	0.4'	CONVENT GRASS, 100' dia, W. #2, 3346426
	150	Marble Falls 100'	150	17.2'	0.4'	CONVENT GRASS, 100' dia, W. #3, 3346427
	151	Marble Falls 100'	151	17.2'	0.4'	CONVENT GRASS, 100' dia, W. #4, 3346428
	152	Marble Falls 100'	152	17.2'	0.4'	CONVENT GRASS, 100' dia, W. #5, 3346429
	W. #6, 3346430					
	W. #7, 3346431					
	W. #8, 3346432					
	W. #9, 3346433					
	W. #10, 3346434					
	W. #11, 3346435					
	W. #12, 3346436					
	W. #13, 3346437					
	W. #14, 3346438					
	W. #15, 3346439					
	W. #16, 3346440					
	W. #17, 3346441					
	W. #18, 3346442					
	W. #19, 3346443					
	W. #20, 3346444					
	W. #21, 3346445					
	W. #22, 3346446					
	W. #23, 3346447					
	W. #24, 3346448					
	W. #25, 3346449					
	W. #26, 3346450					
	W. #27, 3346451					
	W. #28, 3346452					
	W. #29, 3346453					
	W. #30, 3346454					
	W. #31, 3346455					
	W. #32, 3346456					
	W. #33, 3346457					
	W. #34, 3346458					
	W. #35, 3346459					
	W. #36, 3346460					
	W. #37, 3346461					
	W. #38, 3346462					
	W. #39, 3346463					
	W. #40, 3346464					
	W. #41, 3346465					
	W. #42, 3346466					
	W. #43, 3346467					
	W. #44, 3346468					
	W. #45, 3346469					
	W. #46, 3346470					
	W. #47, 3346471					
	W. #48, 3346472					
	W. #49, 3346473					
	W. #50, 3346474					
	W. #51, 3346475					
	W. #52, 3346476					
	W. #53, 3346477					
	W. #54, 3346478					
	W. #55, 3346479					
	W. #56, 3346480					
	W. #57, 3346481					
	W. #58, 3346482					
	W. #59, 3346483					
	W. #60, 3346484					
	W. #61, 3346485					
	W. #62, 3346486					
	W. #63, 3346487					
	W. #64, 3346488					
	W. #65, 3346489					
	W. #66, 3346490					
	W. #67, 3346491					
	W. #68, 3346492					
	W. #69, 3346493					
	W. #70, 3346494					
	W. #71, 3346495					
	W. #72, 3346496					
	W. #73, 3346497					
	W. #74, 3346498					
	W. #75, 3346499					
	W. #76, 3346500					
	W. #77, 3346501					
	W. #78, 3346502					
	W. #79, 3346503					
	W. #80, 3346504					
	W. #81, 3346505					
	W. #82, 3346506					
	W. #83, 3346507					
	W. #84, 3346508					
	W. #85, 3346509					
	W. #86, 3346510					
	W. #87, 3346511					
	W. #88, 3346512					
	W. #89, 3346513					
	W. #90, 3346514					
	W. #91, 3346515					
	W. #92, 3346516					
	W. #93, 3346517					
	W. #94, 3346518					
	W. #95, 3346519					
	W. #96, 3346520					
	W. #97, 3346521					
	W. #98, 3346522					
	W. #99, 3346523					
	W. #100, 3346524					
	W. #101, 3346525					
	W. #102, 3346526					
	W. #103, 3346527					
	W. #104, 3346528					
	W. #105, 3346529					
	W. #106, 3346530					
	W. #107, 3346531					
	W. #108, 3346532					
	W. #109, 3346533					
	W. #110, 3346534					
	W. #111, 3346535					
	W. #112, 3346536					
	W. #113, 3346537					
	W. #114, 3346538					
	W. #115, 3346539					
	W. #116, 3346540					
	W. #117, 3346541					
	W. #118, 3346542					
	W. #119, 3346543					
	W. #120, 3346544					
	W. #121, 3346545					
	W. #122, 3346546					
	W. #123, 3346547					
	W. #124, 3346548					
	W. #125, 3346549					
	W. #126, 3346550					
	W. #127, 3346551					
	W. #128, 3346552					
	W. #129, 3346553					
	W. #130, 3346554					
	W. #131, 3346555					
	W. #132, 3346556					
	W. #133, 3346557					
	W. #134, 3346558					
	W. #135, 3346559					
	W. #136, 3346560					
	W. #137, 3346561					
	W. #138, 3346562					
	W. #139, 3346563					
	W. #140, 3346564					
	W. #141, 3346565					
	W. #142, 3346566					
	W. #143, 3346567					
	W. #144, 3346568					
	W. #145, 3346569					
	W. #146, 3346570					
	W. #147, 3346571					
	W. #148, 3346572					
	W. #149, 3346573					
	W. #150, 3346574					
	W. #151, 3346575					
	W. #152, 3346576					
	W. #153, 3346577					
	W. #154, 3346578					
	W. #155, 3346579					
	W. #156, 3346580					
	W. #157, 3346581					
	W. #158, 3346582					
	W. #159, 3346583					
	W. #160, 3346584					
	W. #161, 3346585					
	W. #162, 3346586					
	W. #163, 3346587					
	W. #164, 3346588					
	W. #165, 3346589					
	W. #166, 3346590					
	W. #167, 3346591					
	W. #168, 3346592					
	W. #169, 3346593					
	W. #170, 3346594					
	W. #171, 3346595					
	W. #172, 3346596					
	W. #173, 3346597					
	W. #174, 3346598					
	W. #175, 3346599					
	W. #176, 3346600					
	W. #177, 3346601					
	W. #178, 3346602					
	W. #179, 3346603					
	W. #180, 3346604					
	W. #181, 3346605					
	W. #182, 3346606					
	W. #183, 3346607					
	W. #184, 3346608					
	W. #185, 3346609					
	W. #186, 3346610					
	W. #187, 3346611					
	W. #188, 3346612					
	W. #189, 3346613					
	W. #190, 3346614					
	W. #191, 3346615					
	W. #192, 3346616					
	W. #193, 3346617					
	W. #194, 3346618					
	W. #195, 3346619					
	W. #196, 3346620					
	W. #197, 3346621					
	W. #198, 3346622					
	W. #199, 3346623					
	W. #200, 3346624					
	W. #201, 3346625					
	W. #202, 3346626					
	W. #203, 3346627					
	W. #204, 3346628					
	W. #205, 3346629					
	W. #206, 3346630					
	W. #207, 3346631					
	W. #208, 3346632					
	W. #209, 3346633					
	W. #210, 3346634					
	W. #211, 3346635					
	W. #212, 3346636					
	W. #213, 3346637					
	W. #214, 3346638					
	W. #215, 3346639					
	W. #216, 3346640					
	W. #217, 3346641					
	W. #218, 3346642					
	W. #219, 3346643					
	W. #220, 3346644					
	W. #221, 3346645					
	W. #222, 3346646					
	W. #223, 3346647					
	W. #224, 3346648					
	W. #225, 3346649					
	W. #226, 3346650					
	W. #227, 3346651					
	W. #228, 3346652					
	W. #229, 3346653					
	W. #230, 3346654					
	W. #231, 3346655					
	W. #232, 3346656					
	W. #233, 3346657					
	W. #234, 3346658					
	W. #235, 3346659					
	W. #236, 3346660					
	W. #237, 3346661					
	W. #238, 3346662					
	W. #239, 3346663					
	W. #240, 3346664					
	W. #241, 3346665					
	W. #242, 3346666					
	W. #243, 3346667					
	W. #244, 3346668					
	W. #245, 3346669					
	W. #246, 3346670					
	W. #247, 3346671					
	W. #248, 3346672					
	W. #249, 3346673					
	W. #250, 3346674					
	W. #251, 3346675					
	W. #252, 3346676					
	W. #253, 3346677					
	W. #254, 3346678					
	W. #255, 3346679					
	W. #256, 3346680					
	W. #257, 3346681					
	W. #258, 3346682					
	W. #259, 3346683					
	W. #260, 3346684					
	W. #261, 3346685					
	W. #262, 3346686					
	W. #263, 3346687					
	W. #264, 3346688					
	W. #265, 3346689					
	W. #266, 3346690					
	W. #267, 3346691					
	W. #268, 3346692					
	W. #269, 3346693					
	W. #270, 3346694					
	W. #271, 3346695					
	W. #272, 3346696					
	W. #273, 3346697					
	W. #274, 3346698					
	W. #275, 3346699					
	W. #276, 3346700					
	W. #277, 3346701					
	W. #278, 3346702					
	W. #279, 3346703					
	W. #280, 3346704					
	W. #281, 3346705					
	W. #282, 3346706					
	W. #283, 3346707					
	W. #284, 3346708					
	W. #285, 3346709					
	W. #286, 3346710					
	W. #287, 3346711					
	W. #288, 3346712					
	W. #289, 3346713					
	W. #290, 3346714					
	W. #291, 3346715					
	W. #292, 3346716					
	W. #293, 3346717					
	W. #294, 3346718					
	W. #295, 3346719					
	W. #296, 3346720					
	W. #297, 3346721					
	W. #298, 3346722					
	W. #299, 3346723					
	W. #300, 3346724					
	W. #301, 3346725					
	W. #302, 3346726					
	W. #303, 3346727					
	W. #304, 3346728					
	W. #305, 3346729					
	W. #306, 3346730					
	W. #307, 3346731					
	W. #308, 3346732					
	W. #309, 3346733					
	W. #310, 3346734					
	W. #311, 3346735					
	W. #312, 3346736					
	W. #313, 3346737					
	W. #314, 3346738					
	W. #315, 3346739					
	W. #316, 3346740					
	W. #317, 3346741					
	W. #318, 3346742					
	W. #319, 3346743					
	W. #320, 3346744					
	W. #321, 3346745					
	W. #322, 3346746					
	W. #323, 3346747					
	W. #324, 3346748					
	W. #325, 3346749					
	W. #326, 3346750					
	W. #327, 3346751					
	W. #328, 3346752					
	W. #329, 3346753					
	W. #330, 3346754					
	W. #331, 3346755					
	W. #332, 3346756					
	W. #333, 3346757					
	W. #334, 3346758					
	W. #335, 3346759					
	W. #336, 3346760					
	W. #337, 3346761					
	W. #338, 3346762					
	W. #339, 3346763					
	W. #340, 3346764					
	W. #341, 3346765					
	W. #342, 3346766					
	W. #343, 3346767					
	W. #344, 3346768					
	W. #345, 3346769					
	W. #346, 3346770					
	W. #347, 3346771					
	W. #348, 3346772					
	W. #349, 3346773					
	W. #350, 3346774					
	W. #351, 3346775					
	W. #352, 3346776					
	W. #353, 3346777					
	W. #354, 3346778					
	W. #355, 3346779					
	W. #356, 3346780					
	W. #357, 3346781					
	W. #358, 3346782					
	W. #359, 3346783					
	W. #360, 3346784					
	W. #361, 3346785					
	W. #362, 3346786					
	W. #363, 3346787					
	W. #364, 3346788					
	W. #365, 3346789					
	W. #366, 3346790					
	W. #367, 3346791					
	W. #368, 3346792					
	W. #369, 3346793					
	W. #370, 3346794					
	W. #371, 3346795					
	W. #372, 3346796					
	W. #373, 3346797					
	W. #374, 3346798					
	W. #375, 3346799					
	W. #376, 3346800					
	W. #377, 3346801					
	W. #378, 3346802					
	W. #379, 3346803					
	W. #380, 3346804					
	W. #381, 3346805					
	W. #382, 3346806					
	W. #383, 3346807					
	W. #384, 3346808					
	W. #385, 3346809					
	W. #386, 3346810					

L4.4 LANDSCAPE DETAILS

ADDISON GROVE
BLOCK A LOTS 1-33, BLOCK B LOTS 1-57, BLOCK
C LOTS 1-34, BLOCK D LOTS 1-55
US SURVEYOR 5213
TOWN PROJECT NUMBER:
DATE PREPARED: APRIL 11, 2016



REPAIRED BY:

ASHAKURA ROBINSON COMPANY
10002 WASHINGTON AVENUE, SUITE A
HOUSTON, TEXAS 77037

CONTACT: KELI ASHAKURA
PHONE: 713-337-0830
FAX: 713-337-0830
E-MAIL: KELI@ASHAKURA-ROBINSON.COM



04-11-2016
Issued for PD Submittal
NOT FOR CONSTRUCTION

[illegible]

